

Milk production report

18/19 by State

(Million Litres)



	New South Wales			Victoria			Queensland			South Australia			Western Australia			Tasmania			Australia		
	17/18	18/19	Var %	17/18	18/19	Var %	17/18	18/19	Var %	17/18	18/19	Var %	17/18	18/19	Var %	17/18	18/19	Var %	17/18	18/19	Var %
July	96.3	90.0	-6.5%	431.8	421.4	-2.4%	36.0	33.2	-7.8%	35.7	36.9	3.3%	31.6	30.3	-4.2%	27.1	27.5	1.5%	658.4	639.3	-2.9%
YTD	96.3	90.0	-6.5%	431.8	421.4	-2.4%	36.0	33.2	-7.8%	35.7	36.9	3.3%	31.6	30.3	-4.2%	27.1	27.5	1.5%	658.4	639.3	-2.9%
August	101.5	92.1	-9.3%	499.1	483.3	-3.2%	37.3	34.1	-8.5%	36.5	38.2	4.7%	31.2	31.3	0.2%	38.3	39.5	3.1%	743.9	718.4	-3.4%
YTD	197.7	182.1	-7.9%	930.9	904.7	-2.8%	73.2	67.3	-8.2%	72.2	75.1	4.0%	62.8	61.6	-2.0%	65.3	67.0	2.5%	1,402.3	1,357.7	-3.2%
September	105.3	95.4	-9.4%	608.8	585.7	-3.8%	36.6	33.1	-9.6%	42.6	45.2	6.1%	33.8	33.7	-0.4%	78.0	83.6	7.1%	905.2	876.6	-3.2%
YTD	303.1	277.5	-8.4%	1,539.8	1,490.4	-3.2%	109.8	100.3	-8.6%	114.8	120.3	4.8%	96.7	95.3	-1.4%	143.4	150.5	5.0%	2,307.5	2,234.3	-3.2%
October	109.9	98.9	-10.1%	703.2	654.6	-6.9%	37.6	33.6	-10.5%	51.1	52.1	2.0%	37.2	36.6	-1.5%	112.0	117.9	5.3%	1,051.1	993.8	-5.4%
YTD	413.0	376.4	-8.9%	2,243.0	2,145.0	-4.4%	147.4	134.0	-9.1%	165.9	172.4	3.9%	133.9	131.9	-1.4%	255.4	268.4	5.1%	3,358.5	3,228.1	-3.9%
November	102.4	90.9	-11.2%	649.4	588.0	-9.5%	36.1	31.6	-12.5%	47.9	49.1	2.5%	35.2	34.6	-1.6%	113.4	115.5	1.9%	984.4	909.7	-7.6%
YTD	515.4	467.3	-9.3%	2,892.4	2,733.0	-5.5%	183.4	165.5	-9.8%	213.8	221.5	3.6%	169.0	166.5	-1.5%	368.8	384.0	4.1%	4,342.9	4,137.8	-4.7%
December	97.8	87.1	-11.0%	585.9	534.1	-8.8%	34.7	30.9	-10.9%	46.4	45.9	-1.0%	32.8	32.4	-1.4%	102.0	107.1	5.0%	899.6	837.5	-6.9%
YTD	613.2	554.4	-9.6%	3,478.3	3,267.2	-6.1%	218.1	196.4	-10.0%	260.2	267.4	2.8%	201.9	198.9	-1.5%	470.7	491.0	4.3%	5,242.5	4,975.4	-5.1%
January	89.7			505.9			32.8			42.6			31.8			89.7			792.4		
YTD	702.9			3,984.2			250.9			302.7			233.7			560.4			6,034.9		
February	78.4			388.8			28.6			37.5			28.9			70.2			632.4		
YTD	781.3			4,373.0			279.5			340.2			262.6			630.6			6,667.2		
March	85.2			380.3			30.9			42.6			32.0			77.1			648.1		
YTD	866.5			4,753.3			310.4			382.8			294.5			707.7			7,315.4		
April	85.3			382.3			29.1			41.4			30.7			79.5			648.3		
YTD	951.8			5,135.6			339.5			424.2			325.2			787.2			7,963.7		
May	85.5			418.2			29.9			41.7			31.2			76.3			682.8		
YTD	1,037.3			5,553.8			369.4			466.0			356.4			863.5			8,646.5		
June	83.7			410.3			29.7			38.3			29.0			49.7			640.7		
YTD	1,121.0			5,964.1			399.1			504.3			385.4			913.2			9,287.2		
Total	1,121.0			5,964.1			399.1			504.3			385.4			913.2			9,287.2		

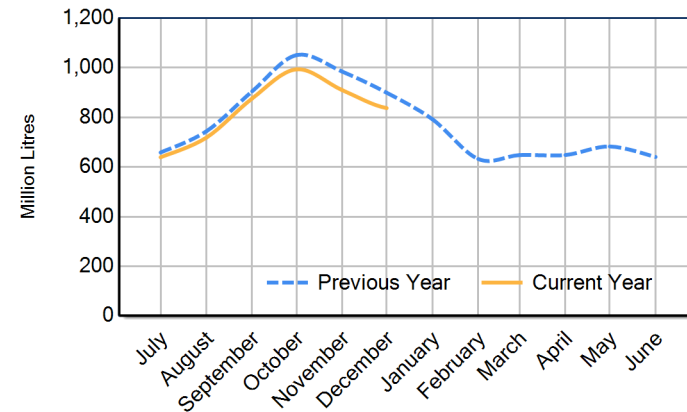
Milk production report (Litres '000s)

National



		NSW	VIC	QLD	SA	WA	TAS	Australia
Month	December-17	97,811	585,923	34,704	46,379	32,833	101,955	899,606
	December-18	87,095	534,147	30,918	45,920	32,362	107,089	837,532
	% change	-11.0%	-8.8%	-10.9%	-1.0%	-1.4%	5.0%	-6.9%
Region Share	December-17	10.9%	65.1%	3.9%	5.2%	3.6%	11.3%	100.0%
	December-18	10.4%	63.8%	3.7%	5.5%	3.9%	12.8%	100.0%
Year To Date		NSW	VIC	QLD	SA	WA	TAS	Australia
	2017/2018	613,233	3,478,332	218,142	260,188	201,882	470,735	5,242,512
	2018/2019	554,405	3,267,172	196,426	267,435	198,896	491,042	4,975,376
	% change	-9.6%	-6.1%	-10.0%	2.8%	-1.5%	4.3%	-5.1%
Region Share	2017/2018	11.7%	66.3%	4.2%	5.0%	3.9%	9.0%	100.0%
	2018/2019	11.1%	65.7%	3.9%	5.4%	4.0%	9.9%	100.0%
Total	2017/2018							
	Region Share	12.1%	64.2%	4.3%	5.4%	4.2%	9.8%	100.0%

Australian Milk Production - National Total 2017/2018 & 2018/2019



Average Milkfat & Protein (%)

		NSW	VIC	QLD	SA	WA	TAS	Australia
Milkfat	December-16	3.84%	4.04%	3.87%	3.64%	3.99%	4.18%	4.00%
	December-17	3.87%	4.07%	3.94%	3.71%	3.97%	4.16%	4.03%
	December-18	3.88%	4.11%	3.95%	3.83%	3.95%	4.23%	4.08%
	% change 18/19	0.3%	1.1%	0.4%	3.3%	-0.6%	1.7%	1.2%
Protein		NSW	VIC	QLD	SA	WA	TAS	Australia
	December-16	3.15%	3.34%	3.23%	3.19%	3.21%	3.43%	3.31%
	December-17	3.18%	3.29%	3.27%	3.17%	3.19%	3.35%	3.27%
	December-18	3.13%	3.29%	3.21%	3.16%	3.20%	3.37%	3.27%
% change 18/19	-1.6%	0.1%	-1.9%	-0.1%	0.3%	0.5%	0.0%	

State Share of Milk Production for the month of December 2018

