

Milk production report

18/19 by State

(Million Litres)



	New South Wales			Victoria			Queensland			South Australia			Western Australia			Tasmania			Australia		
	17/18	18/19	Var %	17/18	18/19	Var %	17/18	18/19	Var %	17/18	18/19	Var %	17/18	18/19	Var %	17/18	18/19	Var %	17/18	18/19	Var %
July	96.3	90.0	-6.5%	431.8	421.4	-2.4%	36.0	33.2	-7.8%	35.7	36.9	3.3%	31.6	30.4	-3.9%	27.1	27.5	1.5%	658.4	639.4	-2.9%
YTD	96.3	90.0	-6.5%	431.8	421.4	-2.4%	36.0	33.2	-7.8%	35.7	36.9	3.3%	31.6	30.4	-3.9%	27.1	27.5	1.5%	658.4	639.4	-2.9%
August	101.5	92.1	-9.3%	499.1	483.3	-3.2%	37.3	34.1	-8.5%	36.5	38.2	4.7%	31.2	31.3	0.4%	38.3	39.5	3.1%	743.9	718.5	-3.4%
YTD	197.7	182.1	-7.9%	930.9	904.7	-2.8%	73.2	67.3	-8.2%	72.2	75.1	4.0%	62.8	61.7	-1.8%	65.3	67.0	2.5%	1,402.3	1,357.9	-3.2%
September	105.3	95.4	-9.4%	608.8	586.6	-3.6%	36.6	33.1	-9.5%	42.6	45.2	6.1%	33.8	33.8	-0.1%	78.0	83.6	7.1%	905.2	877.7	-3.0%
YTD	303.1	277.5	-8.4%	1,539.8	1,491.3	-3.1%	109.8	100.3	-8.6%	114.8	120.3	4.8%	96.7	95.5	-1.2%	143.4	150.5	5.0%	2,307.5	2,235.5	-3.1%
October	109.9	98.9	-10.1%	703.2	655.5	-6.8%	37.6	33.7	-10.3%	51.1	52.1	2.0%	37.2	36.6	-1.5%	112.0	117.9	5.3%	1,051.1	994.7	-5.4%
YTD	413.0	376.4	-8.9%	2,243.0	2,146.8	-4.3%	147.4	134.0	-9.0%	165.9	172.4	3.9%	133.9	132.1	-1.3%	255.4	268.4	5.1%	3,358.5	3,230.3	-3.8%
November	102.4	91.4	-10.8%	649.4	589.0	-9.3%	36.1	31.6	-12.3%	47.9	49.1	2.5%	35.2	34.6	-1.6%	113.4	115.5	1.9%	984.4	911.2	-7.4%
YTD	515.4	467.7	-9.3%	2,892.4	2,735.8	-5.4%	183.4	165.6	-9.7%	213.8	221.5	3.6%	169.0	166.8	-1.3%	368.8	384.0	4.1%	4,342.9	4,141.4	-4.6%
December	97.8	88.1	-9.9%	585.9	535.6	-8.6%	34.7	31.1	-10.3%	46.4	46.2	-0.4%	32.8	32.3	-1.7%	102.0	107.1	5.0%	899.6	840.4	-6.6%
YTD	613.2	555.8	-9.4%	3,478.3	3,271.4	-5.9%	218.1	196.8	-9.8%	260.2	267.7	2.9%	201.9	199.1	-1.4%	470.7	491.0	4.3%	5,242.5	4,981.8	-5.0%
January	89.7	80.0	-10.8%	505.9	433.9	-14.2%	32.8	29.8	-9.1%	42.6	41.7	-1.9%	31.8	29.7	-6.6%	89.7	91.8	2.4%	792.4	706.9	-10.8%
YTD	702.9	635.8	-9.5%	3,984.2	3,705.3	-7.0%	250.9	226.6	-9.7%	302.7	309.4	2.2%	233.7	228.7	-2.1%	560.4	582.8	4.0%	6,034.9	5,688.7	-5.7%
February	78.4	69.4	-11.5%	388.8	326.8	-15.9%	28.6	24.9	-12.7%	37.5	36.1	-3.8%	28.9	27.2	-5.7%	70.2	70.1	-0.2%	632.4	554.5	-12.3%
YTD	781.3	705.2	-9.7%	4,373.0	4,032.1	-7.8%	279.5	251.5	-10.0%	340.2	345.5	1.6%	262.6	256.0	-2.5%	630.6	652.9	3.5%	6,667.2	6,243.2	-6.4%
March	85.2	75.9	-10.8%	380.3	332.2	-12.6%	30.9	26.7	-13.6%	42.6	40.4	-5.2%	32.0	31.0	-3.0%	77.1	75.7	-1.9%	648.1	582.0	-10.2%
YTD	866.5	781.2	-9.8%	4,753.3	4,364.3	-8.2%	310.4	278.2	-10.4%	382.8	385.9	0.8%	294.5	287.0	-2.6%	707.7	728.6	2.9%	7,315.4	6,825.2	-6.7%
April	85.3	71.2	-16.5%	382.3	323.0	-15.5%	29.1	26.4	-9.4%	41.4	38.5	-7.1%	30.7	29.6	-3.4%	79.5	71.0	-10.7%	648.3	559.7	-13.7%
YTD	951.8	852.4	-10.4%	5,135.6	4,687.3	-8.7%	339.5	304.6	-10.3%	424.2	424.4	0.0%	325.2	316.7	-2.6%	787.2	799.6	1.6%	7,963.7	7,385.0	-7.3%
May	85.5			418.2			29.9			41.7			31.2			76.3			682.8		
YTD	1,037.3			5,553.8			369.4			466.0			356.4			863.5			8,646.5		
June	83.7			410.3			29.7			38.3			29.0			49.7			640.7		
YTD	1,121.0			5,964.1			399.1			504.3			385.4			913.2			9,287.2		
Total	1,121.0			5,964.1			399.1			504.3			385.4			913.2			9,287.2		

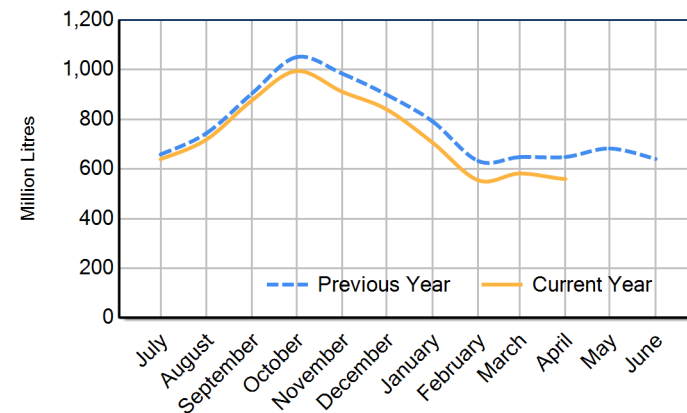
Milk production report (Litres '000s)

National



		NSW	VIC	QLD	SA	WA	TAS	Australia
Month	April-18	85,295	382,306	29,102	41,415	30,685	79,499	648,303
	April-19	71,246	322,978	26,372	38,472	29,643	71,020	559,730
	% change	-16.5%	-15.5%	-9.4%	-7.1%	-3.4%	-10.7%	-13.7%
Region Share	April-18	13.2%	59.0%	4.5%	6.4%	4.7%	12.3%	100.0%
	April-19	12.7%	57.7%	4.7%	6.9%	5.3%	12.7%	100.0%
Year To Date		NSW	VIC	QLD	SA	WA	TAS	Australia
	2017/2018	951,803	5,135,635	339,504	424,250	325,235	787,244	7,963,671
	2018/2019	852,419	4,687,328	304,582	424,381	316,678	799,574	7,384,961
	% change	-10.4%	-8.7%	-10.3%	0.0%	-2.6%	1.6%	-7.3%
Region Share	2017/2018	12.0%	64.5%	4.3%	5.3%	4.1%	9.9%	100.0%
	2018/2019	11.5%	63.5%	4.1%	5.7%	4.3%	10.8%	100.0%
Total		NSW	VIC	QLD	SA	WA	TAS	Australia
	2017/2018	1,121,023	5,964,058	399,134	504,297	385,448	913,209	9,287,168
	Region Share	12.1%	64.2%	4.3%	5.4%	4.2%	9.8%	100.0%

Australian Milk Production - National Total 2017/2018 & 2018/2019



Average Milkfat & Protein (%)

		NSW	VIC	QLD	SA	WA	TAS	Australia
Milkfat	April-17	4.08%	4.53%	4.11%	3.97%	4.23%	4.74%	4.42%
	April-18	4.04%	4.52%	4.13%	3.96%	4.10%	4.60%	4.39%
	April-19	4.07%	4.60%	4.10%	4.11%	4.17%	4.88%	4.49%
	% change 18/19	0.8%	1.7%	-0.6%	3.9%	1.6%	6.1%	2.1%
Protein		NSW	VIC	QLD	SA	WA	TAS	Australia
	April-17	3.37%	3.53%	3.44%	3.30%	3.28%	3.70%	3.50%
	April-18	3.32%	3.50%	3.36%	3.32%	3.29%	3.73%	3.47%
	April-19	3.31%	3.50%	3.36%	3.34%	3.26%	3.73%	3.47%
	% change 18/19	0.0%	0.0%	0.1%	0.5%	-0.9%	0.1%	0.0%

State Share of Milk Production for the month of April 2019

