

# Milk production report

## 25/26 by State

### (Million Litres)



	New South Wales			Victoria			Queensland			South Australia			Western Australia			Tasmania			Australia		
	24/25	25/26	Var %	24/25	25/26	Var %	24/25	25/26	Var %	24/25	25/26	Var %	24/25	25/26	Var %	24/25	25/26	Var %	24/25	25/26	Var %
July	87.9	90.1	2.5%	390.9	371.0	-5.1%	23.3	24.0	3.2%	31.5	28.5	-9.6%	28.4	26.4	-7.2%	17.4	16.4	-6.1%	579.4	556.3	-4.0%
YTD	87.9	90.1	2.5%	390.9	371.0	-5.1%	23.3	24.0	3.2%	31.5	28.5	-9.6%	28.4	26.4	-7.2%	17.4	16.4	-6.1%	579.4	556.3	-4.0%
August	95.3	95.2	-0.1%	462.2	445.5	-3.6%	24.7	25.5	3.5%	36.5	33.5	-8.2%	27.8	25.9	-6.8%	35.4	35.8	1.1%	681.9	661.5	-3.0%
YTD	183.3	185.4	1.1%	853.0	816.5	-4.3%	47.9	49.6	3.3%	68.0	62.0	-8.8%	56.3	52.3	-7.0%	52.8	52.2	-1.3%	1,261.4	1,217.9	-3.4%
September	97.3	98.3	1.0%	535.4	527.7	-1.4%	25.7	26.0	1.1%	44.2	41.9	-5.2%	28.8	27.8	-3.6%	80.9	87.1	7.6%	812.5	808.8	-0.4%
YTD	280.6	283.7	1.1%	1,388.5	1,344.2	-3.2%	73.7	75.6	2.5%	112.2	103.9	-7.4%	85.1	80.1	-5.9%	133.8	139.3	4.1%	2,073.8	2,026.7	-2.3%
October	101.8	103.4	1.6%	593.8	575.8	-3.0%	26.7	26.4	-1.1%	50.2	46.2	-8.0%	31.7	31.1	-2.0%	113.5	113.1	-0.4%	917.8	895.9	-2.4%
YTD	382.4	387.0	1.2%	1,982.3	1,920.0	-3.1%	100.4	102.0	1.6%	162.4	150.0	-7.6%	116.8	111.2	-4.8%	247.3	252.3	2.0%	2,991.6	2,922.6	-2.3%
November	95.4	97.6	2.2%	555.0	537.7	-3.1%	24.5	25.2	2.9%	48.0	44.0	-8.4%	29.5	29.2	-1.0%	115.6	115.5	-0.1%	868.0	849.2	-2.2%
YTD	477.8	484.6	1.4%	2,537.3	2,457.7	-3.1%	124.9	127.2	1.8%	210.4	194.0	-7.8%	146.4	140.4	-4.1%	362.8	367.8	1.4%	3,859.6	3,771.8	-2.3%
December	93.1			503.8			23.7			43.7			27.8			107.3			799.4		
YTD	570.9			3,041.0			148.6			254.1			174.2			470.2			4,659.0		
January	90.9			431.5			22.5			39.2			26.1			98.0			708.2		
YTD	661.8			3,472.5			171.1			293.4			200.3			568.2			5,367.3		
February	78.5			335.9			19.4			35.1			24.0			79.5			572.4		
YTD	740.3			3,808.4			190.5			328.4			224.3			647.7			5,939.6		
March	83.0			346.0			20.4			39.2			27.0			80.4			595.9		
YTD	823.3			4,154.4			210.9			367.6			251.3			728.1			6,535.5		
April	80.8			357.8			20.3			37.0			26.2			71.9			594.0		
YTD	904.0			4,512.2			231.2			404.6			277.6			800.0			7,129.6		
May	84.1			387.4			21.5			35.9			27.3			64.1			620.3		
YTD	988.2			4,899.6			252.6			440.5			304.9			864.2			7,749.9		
June	83.1			366.1			22.1			30.7			26.3			36.7			565.1		
YTD	1,071.3			5,265.7			274.7			471.2			331.2			900.8			8,315.0		
<b>Total</b>	<b>1,071.3</b>			<b>5,265.7</b>			<b>274.7</b>			<b>471.2</b>			<b>331.2</b>			<b>900.8</b>			<b>8,315.0</b>		

Produced by the Economics, Data and Insights team at Dairy Australia, Source: Dairy Manufacturers

Please note: These reports contain data based on a combination of voluntary direct reporting from processors, and data sourced from government agencies. Retrospective adjustments are possible if new or revised data is received.

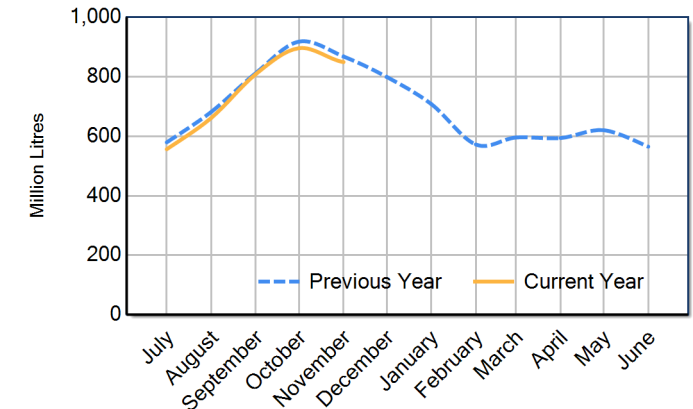
# Milk production report (Litres '000s)



## National

		NSW	VIC	QLD	SA	WA	TAS	Australia
<b>Month</b>	November-23	94,030	553,867	25,710	46,692	29,844	119,863	870,006
	November-24	95,448	554,967	24,507	48,024	29,526	115,560	868,031
	November-25	97,593	537,676	25,216	43,986	29,234	115,494	849,200
	<b>% change</b>	<b>2.2%</b>	<b>-3.1%</b>	<b>2.9%</b>	<b>-8.4%</b>	<b>-1.0%</b>	<b>-0.1%</b>	<b>-2.2%</b>
<b>Region Share</b>	November-24	11.0%	63.9%	2.8%	5.5%	3.4%	13.3%	100.0%
	November-25	11.5%	63.3%	3.0%	5.2%	3.4%	13.6%	100.0%
<b>Year To Date</b>		NSW	VIC	QLD	SA	WA	TAS	Australia
	2023/2024	456,570	2,489,167	128,763	205,710	151,548	379,147	3,810,905
	2024/2025	477,828	2,537,281	124,888	210,417	146,369	362,850	3,859,632
	2025/2026	484,642	2,457,655	127,185	194,031	140,438	367,821	3,771,772
<b>% change</b>	<b>1.4%</b>	<b>-3.1%</b>	<b>1.8%</b>	<b>-7.8%</b>	<b>-4.1%</b>	<b>1.4%</b>	<b>-2.3%</b>	
<b>Region Share</b>	2024/2025	12.4%	65.7%	3.2%	5.5%	3.8%	9.4%	100.0%
	2025/2026	12.8%	65.2%	3.4%	5.1%	3.7%	9.8%	100.0%
<b>Total</b>		NSW	VIC	QLD	SA	WA	TAS	Australia
	2024/2025	1,071,288	5,265,692	274,728	471,237	331,232	900,845	8,315,020
	<b>Region Share</b>	<b>12.9%</b>	<b>63.3%</b>	<b>3.3%</b>	<b>5.7%</b>	<b>4.0%</b>	<b>10.8%</b>	<b>100.0%</b>

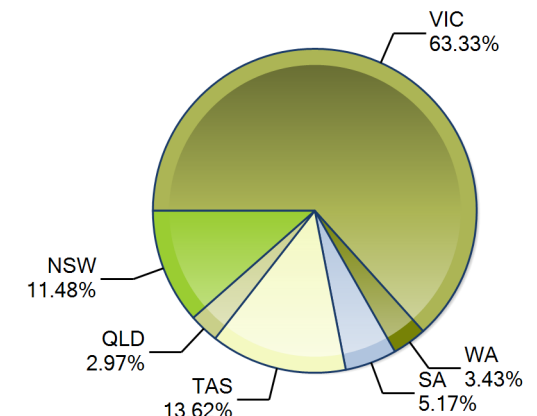
Australian Milk Production - National Total 2024/2025 & 2025/2026



## Average Milkfat & Protein (%)

		NSW	VIC	QLD	SA	WA	TAS	Australia
<b>Milkfat</b>	November-23	3.98%	4.07%	3.99%	3.86%	3.96%	4.08%	4.04%
	November-24	4.05%	4.12%	4.05%	3.85%	3.96%	4.18%	4.10%
	November-25	4.06%	4.13%	4.07%	3.92%	3.93%	4.18%	4.11%
	<b>% change 25/26</b>	<b>0.1%</b>	<b>0.2%</b>	<b>0.4%</b>	<b>1.9%</b>	<b>-0.9%</b>	<b>0.0%</b>	<b>0.2%</b>
<b>Protein</b>	November-23	3.30%	3.42%	3.26%	3.37%	3.26%	3.48%	3.40%
	November-24	3.33%	3.42%	3.31%	3.34%	3.34%	3.49%	3.41%
<b>Protein</b>	November-25	3.35%	3.43%	3.32%	3.39%	3.34%	3.54%	3.43%
	<b>% change 25/26</b>	<b>0.7%</b>	<b>0.3%</b>	<b>0.4%</b>	<b>1.6%</b>	<b>-0.3%</b>	<b>1.4%</b>	<b>0.5%</b>

State Share of Milk Production for the month of November 2025



Note: These reports contain data based on a combination of voluntary direct reporting from processors, and data sourced from government agencies. Retrospective adjustments are possible if new or revised data is received.