

Milk production report

22/23 by State

(Million Litres)



	New South Wales			Victoria			Queensland			South Australia			Western Australia			Tasmania			Australia		
	21/22	22/23	Var %	21/22	22/23	Var %	21/22	22/23	Var %	21/22	22/23	Var %	21/22	22/23	Var %	21/22	22/23	Var %	21/22	22/23	Var %
July	92.3	80.7	-12.6%	411.9	387.1	-6.0%	26.0	22.3	-14.3%	34.0	32.1	-5.7%	29.1	29.1	-0.2%	22.3	19.0	-14.7%	615.6	570.2	-7.4%
YTD	92.3	80.7	-12.6%	411.9	387.1	-6.0%	26.0	22.3	-14.3%	34.0	32.1	-5.7%	29.1	29.1	-0.2%	22.3	19.0	-14.7%	615.6	570.2	-7.4%
August	98.4	85.5	-13.1%	471.6	452.1	-4.1%	27.7	25.1	-9.6%	36.3	35.1	-3.3%	29.0	28.2	-2.8%	36.5	34.1	-6.5%	699.5	660.1	-5.6%
YTD	190.8	166.3	-12.9%	883.4	839.2	-5.0%	53.7	47.3	-11.8%	70.3	67.2	-4.5%	58.1	57.3	-1.5%	58.7	53.1	-9.6%	1,315.1	1,230.3	-6.5%
September	100.2	89.6	-10.5%	564.7	532.3	-5.7%	28.4	25.0	-12.1%	45.6	43.2	-5.3%	30.9	30.0	-3.1%	83.0	77.9	-6.1%	852.8	798.1	-6.4%
YTD	291.0	255.9	-12.1%	1,448.1	1,371.5	-5.3%	82.1	72.3	-11.9%	115.9	110.4	-4.8%	89.1	87.3	-2.0%	141.7	131.0	-7.5%	2,167.9	2,028.4	-6.4%
October	105.0	92.8	-11.6%	623.1	583.1	-6.4%	28.8	26.0	-9.6%	50.8	49.0	-3.5%	32.6	32.1	-1.5%	112.6	106.5	-5.4%	952.8	889.6	-6.6%
YTD	396.0	348.7	-11.9%	2,071.1	1,954.6	-5.6%	110.9	98.4	-11.3%	166.7	159.4	-4.4%	121.7	119.4	-1.9%	254.3	237.5	-6.6%	3,120.7	2,917.9	-6.5%
November	99.5			586.4			27.7			49.7			30.7			113.5			907.4		
YTD	495.4			2,657.5			138.6			216.4			152.4			367.8			4,028.2		
December	96.7			541.3			26.7			45.4			28.7			108.0			846.7		
YTD	592.1			3,198.8			165.3			261.8			181.1			475.8			4,874.9		
January	91.0			445.2			24.9			40.6			26.2			92.5			720.4		
YTD	683.1			3,644.0			190.2			302.5			207.3			568.3			5,595.2		
February	79.8			347.8			22.3			36.6			23.9			75.1			585.6		
YTD	762.9			3,991.8			212.5			339.1			231.2			643.4			6,180.9		
March	80.7			354.2			21.5			40.9			26.8			77.0			601.1		
YTD	843.6			4,346.0			233.9			380.0			258.0			720.4			6,781.9		
April	74.4			357.5			21.4			38.9			26.0			69.9			588.1		
YTD	918.0			4,703.5			255.3			418.9			284.0			790.3			7,370.0		
May	76.7			389.3			21.8			38.3			28.0			60.2			614.5		
YTD	994.7			5,092.8			277.1			457.3			312.1			850.5			7,984.4		
June	77.8			371.9			22.0			33.2			28.6			36.4			569.8		
YTD	1,072.4			5,464.7			299.1			490.4			340.6			886.9			8,554.2		
Total	1,072.4			5,464.7			299.1			490.4			340.6			886.9			8,554.2		

Produced by Trade and Strategy, Dairy Australia Limited

Source: Dairy Manufacturers

Please note: These reports contain data based on a combination of voluntary direct reporting from processors, and data sourced from government agencies. Retrospective adjustments are possible if new or revised data is received.

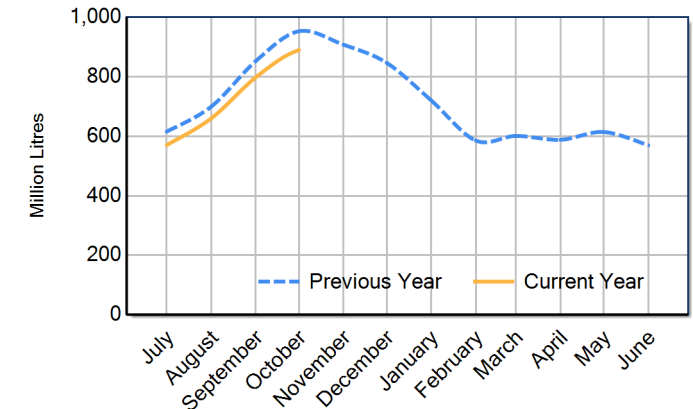
Milk production report (Litres '000s)



National

		NSW	VIC	QLD	SA	WA	TAS	Australia
Month	October-20	101,427	628,025	29,216	50,597	34,139	118,887	962,290
	October-21	104,973	623,060	28,790	50,793	32,631	112,574	952,821
	October-22	92,774	583,108	26,025	48,999	32,126	106,537	889,570
	% change	-11.6%	-6.4%	-9.6%	-3.5%	-1.5%	-5.4%	-6.6%
Region Share	October-21	11.0%	65.4%	3.0%	5.3%	3.4%	11.8%	100.0%
	October-22	10.4%	65.5%	2.9%	5.5%	3.6%	12.0%	100.0%
Year To Date		NSW	VIC	QLD	SA	WA	TAS	Australia
	2020/2021	384,869	2,109,150	111,586	168,939	127,154	274,205	3,175,904
	2021/2022	395,958	2,071,146	110,917	166,730	121,692	254,284	3,120,727
	2022/2023	348,675	1,954,587	98,369	159,380	119,380	237,548	2,917,939
% change	-11.9%	-5.6%	-11.3%	-4.4%	-1.9%	-6.6%	-6.5%	
Region Share	2021/2022	12.7%	66.4%	3.6%	5.3%	3.9%	8.1%	100.0%
	2022/2023	11.9%	67.0%	3.4%	5.5%	4.1%	8.1%	100.0%
Total		NSW	VIC	QLD	SA	WA	TAS	Australia
	2021/2022	1,072,424	5,464,700	299,065	490,444	340,630	886,949	8,554,211
Region Share		12.5%	63.9%	3.5%	5.7%	4.0%	10.4%	100.0%

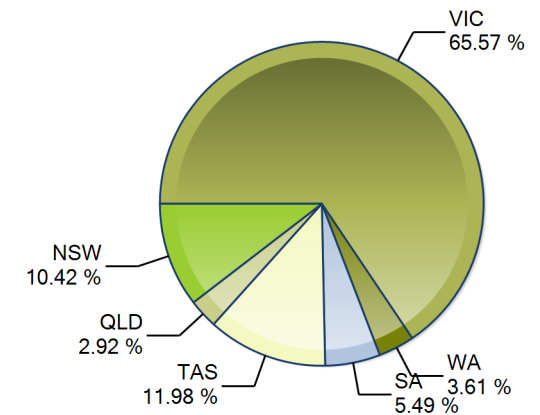
Australian Milk Production - National Total 2021/2022 & 2022/2023



Average Milkfat & Protein (%)

		NSW	VIC	QLD	SA	WA	TAS	Australia
Milkfat	October-20	3.97%	4.07%	3.96%	3.77%	3.79%	4.15%	4.04%
	October-21	4.03%	4.02%	4.03%	3.78%	3.90%	4.06%	4.01%
	October-22	4.03%	4.06%	4.00%	3.82%	3.90%	4.07%	4.04%
	% change 22/23	-0.1%	1.0%	-0.6%	1.1%	0.0%	0.3%	0.7%
Protein	October-20	3.31%	3.40%	3.30%	3.31%	3.34%	3.43%	3.39%
	October-21	3.36%	3.42%	3.31%	3.36%	3.36%	3.41%	3.40%
	October-22	3.36%	3.40%	3.31%	3.34%	3.38%	3.42%	3.39%
% change 22/23	0.0%	-0.6%	0.0%	-0.6%	0.7%	0.3%	-0.4%	

State Share of Milk Production for the month of October 2022



Note: These reports contain data based on a combination of voluntary direct reporting from processors, and data sourced from government agencies. Retrospective adjustments are possible if new or revised data is received.