

Milk production report

21/22 by State

(Million Litres)



	New South Wales			Victoria			Queensland			South Australia			Western Australia			Tasmania			Australia		
	20/21	21/22	Var %	20/21	21/22	Var %	20/21	21/22	Var %	20/21	21/22	Var %	20/21	21/22	Var %	20/21	21/22	Var %	20/21	21/22	Var %
July	90.7	92.3	1.8%	422.1	405.7	-3.9%	26.7	26.0	-2.8%	35.3	34.0	-3.5%	30.4	29.1	-4.2%	23.8	22.3	-6.5%	628.9	609.4	-3.1%
YTD	90.7	92.3	1.8%	422.1	405.7	-3.9%	26.7	26.0	-2.8%	35.3	34.0	-3.5%	30.4	29.1	-4.2%	23.8	22.3	-6.5%	628.9	609.4	-3.1%
August	94.9	98.4	3.7%	483.6	464.1	-4.0%	27.8	27.7	-0.4%	38.1	36.3	-4.6%	30.7	29.0	-5.5%	41.7	36.5	-12.5%	716.8	692.1	-3.4%
YTD	185.6	190.8	2.8%	905.7	869.8	-4.0%	54.5	53.7	-1.6%	73.3	70.3	-4.1%	61.1	58.1	-4.8%	65.5	58.7	-10.3%	1,345.7	1,301.5	-3.3%
September	97.8	100.2	2.4%	575.4	556.6	-3.3%	27.8	28.4	2.2%	45.0	45.6	1.3%	31.9	30.9	-3.2%	89.8	83.0	-7.6%	867.9	844.7	-2.7%
YTD	283.4	291.0	2.7%	1,481.1	1,426.4	-3.7%	82.4	82.1	-0.3%	118.3	115.9	-2.0%	93.0	89.1	-4.3%	155.3	141.7	-8.8%	2,213.6	2,146.2	-3.0%
October	101.4	105.0	3.5%	628.0	613.9	-2.2%	29.2	28.8	-1.5%	50.6	50.8	0.4%	34.1	32.6	-4.4%	118.9	112.6	-5.3%	962.3	943.7	-1.9%
YTD	384.9	396.0	2.9%	2,109.1	2,040.3	-3.3%	111.6	110.9	-0.6%	168.9	166.7	-1.3%	127.2	121.7	-4.3%	274.2	254.3	-7.3%	3,175.9	3,089.9	-2.7%
November	94.8	99.5	4.9%	583.1	577.9	-0.9%	27.1	27.7	2.2%	48.1	49.7	3.3%	32.1	30.7	-4.6%	119.6	113.5	-5.1%	904.9	899.0	-0.7%
YTD	479.7	495.4	3.3%	2,692.3	2,618.2	-2.8%	138.7	138.6	-0.1%	217.1	216.4	-0.3%	159.3	152.4	-4.4%	393.8	367.8	-6.6%	4,080.8	3,988.9	-2.3%
December	91.9	96.7	5.2%	543.7	533.5	-1.9%	26.6	26.7	0.5%	44.4	45.4	2.2%	30.3	28.7	-5.3%	112.0	108.0	-3.6%	848.9	838.9	-1.2%
YTD	571.6	592.1	3.6%	3,236.0	3,151.8	-2.6%	165.3	165.3	0.0%	261.5	261.8	0.1%	189.6	181.1	-4.5%	505.8	475.8	-5.9%	4,929.7	4,827.8	-2.1%
January	89.7	91.0	1.5%	474.6	438.8	-7.5%	26.7	24.9	-6.8%	40.8	40.6	-0.4%	28.0	26.2	-6.3%	101.9	92.5	-9.3%	761.7	714.0	-6.3%
YTD	661.3	683.1	3.3%	3,710.6	3,590.6	-3.2%	191.9	190.2	-0.9%	302.3	302.5	0.1%	217.6	207.3	-4.7%	607.7	568.3	-6.5%	5,691.4	5,541.8	-2.6%
February	78.3	79.8	2.0%	371.6	342.5	-7.8%	22.4	22.3	-0.4%	37.2	36.6	-1.4%	26.1	23.9	-8.5%	82.1	75.1	-8.5%	617.7	580.3	-6.1%
YTD	739.5	762.9	3.2%	4,082.2	3,933.0	-3.7%	214.3	212.5	-0.9%	339.4	339.1	-0.1%	243.8	231.2	-5.1%	689.9	643.4	-6.7%	6,309.1	6,122.1	-3.0%
March	83.0	80.7	-2.8%	366.6	349.6	-4.6%	23.0	21.5	-6.7%	41.9	40.9	-2.4%	29.7	26.8	-9.9%	84.1	77.0	-8.5%	628.4	596.4	-5.1%
YTD	822.6	843.6	2.6%	4,448.8	4,282.6	-3.7%	237.3	233.9	-1.4%	381.4	380.0	-0.4%	273.5	258.0	-5.7%	774.0	720.4	-6.9%	6,937.5	6,718.5	-3.2%
April	80.7	74.4	-7.8%	374.7	352.7	-5.9%	23.4	21.4	-8.8%	40.6	38.9	-4.2%	28.3	26.0	-8.2%	76.7	69.9	-8.8%	624.4	583.3	-6.6%
YTD	903.2	918.0	1.6%	4,823.5	4,635.3	-3.9%	260.7	255.3	-2.1%	422.0	418.9	-0.7%	301.8	284.0	-5.9%	850.7	790.3	-7.1%	7,561.9	7,301.8	-3.4%
May	85.6			421.3			24.2			40.5			30.4			69.2			671.1		
YTD	988.8			5,244.8			284.9			462.4			332.2			919.9			8,233.1		
June	86.6			406.0			24.5			37.1			29.7			41.1			625.1		
YTD	1,075.4			5,650.8			309.5			499.5			361.9			961.0			8,858.1		
Total	1,075.4			5,650.8			309.5			499.5			361.9			961.0			8,858.1		

Produced by Trade and Strategy, Dairy Australia Limited

Source: Dairy Manufacturers

Please note: These reports contain data based on a combination of voluntary direct reporting from processors, and data sourced from government agencies. Retrospective adjustments are possible if new or revised data is received.

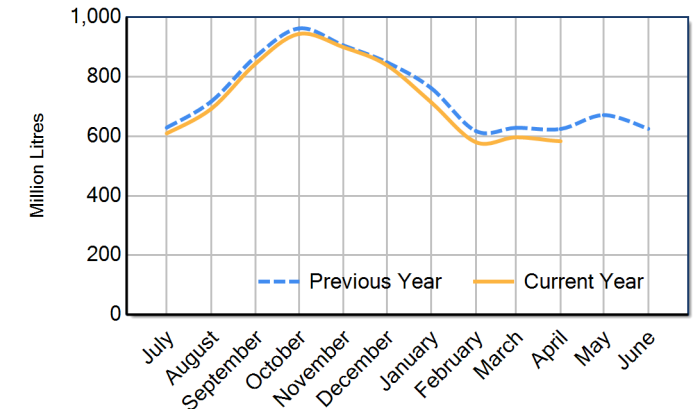
Milk production report (Litres '000s)



National

		NSW	VIC	QLD	SA	WA	TAS	Australia
Month	April-20	78,511	375,260	22,448	39,810	28,695	78,827	623,551
	April-21	80,666	374,712	23,413	40,620	28,321	76,661	624,393
	April-22	74,358	352,699	21,358	38,931	26,013	69,935	583,294
	% change	-7.8%	-5.9%	-8.8%	-4.2%	-8.2%	-8.8%	-6.6%
Region Share	April-21	12.9%	60.0%	3.7%	6.5%	4.5%	12.3%	100.0%
	April-22	12.7%	60.5%	3.7%	6.7%	4.5%	12.0%	100.0%
Year To Date		NSW	VIC	QLD	SA	WA	TAS	Australia
	2019/2020	886,631	4,803,793	268,022	413,977	304,582	837,952	7,514,957
	2020/2021	903,231	4,823,501	260,726	421,985	301,803	850,674	7,561,920
	2021/2022	917,957	4,635,326	255,282	418,933	284,032	790,300	7,301,829
% change	1.6%	-3.9%	-2.1%	-0.7%	-5.9%	-7.1%	-3.4%	
Region Share	2020/2021	11.9%	63.8%	3.4%	5.6%	4.0%	11.2%	100.0%
	2021/2022	12.6%	63.5%	3.5%	5.7%	3.9%	10.8%	100.0%
Total		NSW	VIC	QLD	SA	WA	TAS	Australia
	2020/2021	1,075,444	5,650,790	309,451	499,500	361,929	961,022	8,858,135
Region Share		12.1%	63.8%	3.5%	5.6%	4.1%	10.8%	100.0%

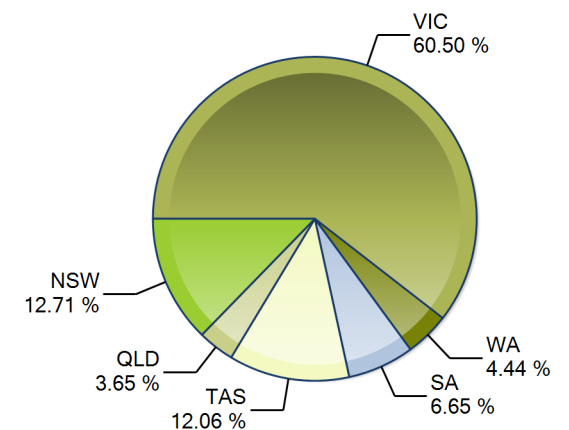
Australian Milk Production - National Total 2020/2021 & 2021/2022



Average Milkfat & Protein (%)

		NSW	VIC	QLD	SA	WA	TAS	Australia
Milkfat	April-20	4.16%	4.64%	4.11%	4.14%	4.06%	4.81%	4.52%
	April-21	4.24%	4.54%	4.16%	4.15%	4.17%	4.86%	4.49%
	April-22	4.26%	4.55%	4.18%	4.16%	4.23%	4.84%	4.50%
	% change 21/22	0.4%	0.2%	0.4%	0.4%	1.4%	-0.5%	0.2%
Protein	April-20	3.37%	3.56%	3.37%	3.40%	3.24%	3.79%	3.54%
	April-21	3.41%	3.50%	3.43%	3.39%	3.24%	3.78%	3.50%
	April-22	3.42%	3.52%	3.41%	3.43%	3.26%	3.79%	3.52%
	% change 21/22	0.1%	0.5%	-0.5%	1.4%	0.5%	0.3%	0.4%

State Share of Milk Production for the month of April 2022



Note: These reports contain data based on a combination of voluntary direct reporting from processors, and data sourced from government agencies. Retrospective adjustments are possible if new or revised data is received.