

Milk production report

21/22 by State

(Million Litres)



	New South Wales			Victoria			Queensland			South Australia			Western Australia			Tasmania			Australia		
	20/21	21/22	Var %	20/21	21/22	Var %	20/21	21/22	Var %	20/21	21/22	Var %	20/21	21/22	Var %	20/21	21/22	Var %	20/21	21/22	Var %
July	90.7	92.3	1.8%	422.1	405.7	-3.9%	26.7	26.0	-2.8%	35.3	34.0	-3.5%	30.4	29.1	-4.2%	23.8	22.3	-6.5%	628.9	609.4	-3.1%
YTD	90.7	92.3	1.8%	422.1	405.7	-3.9%	26.7	26.0	-2.8%	35.3	34.0	-3.5%	30.4	29.1	-4.2%	23.8	22.3	-6.5%	628.9	609.4	-3.1%
August	94.9	98.4	3.7%	483.6	464.1	-4.0%	27.8	27.7	-0.4%	38.1	36.3	-4.6%	30.7	29.0	-5.5%	41.7	36.5	-12.5%	716.8	692.1	-3.4%
YTD	185.6	190.8	2.8%	905.7	869.8	-4.0%	54.5	53.7	-1.6%	73.3	70.3	-4.1%	61.1	58.1	-4.8%	65.5	58.7	-10.3%	1,345.7	1,301.5	-3.3%
September	97.8	100.2	2.4%	575.4	556.6	-3.3%	27.8	28.4	2.2%	45.0	45.6	1.3%	31.9	30.9	-3.2%	89.8	83.0	-7.6%	867.9	844.7	-2.7%
YTD	283.4	291.0	2.7%	1,481.1	1,426.4	-3.7%	82.4	82.1	-0.3%	118.3	115.9	-2.0%	93.0	89.1	-4.3%	155.3	141.7	-8.8%	2,213.6	2,146.2	-3.0%
October	101.4	105.0	3.5%	628.0	613.9	-2.2%	29.2	28.8	-1.5%	50.6	50.8	0.4%	34.1	32.6	-4.4%	118.9	112.6	-5.3%	962.3	943.7	-1.9%
YTD	384.9	396.0	2.9%	2,109.1	2,040.3	-3.3%	111.6	110.9	-0.6%	168.9	166.7	-1.3%	127.2	121.7	-4.3%	274.2	254.3	-7.3%	3,175.9	3,089.9	-2.7%
November	94.8	99.5	4.9%	583.1	577.9	-0.9%	27.1	27.7	2.2%	48.1	49.7	3.3%	32.1	30.7	-4.6%	119.6	113.5	-5.1%	904.9	899.0	-0.7%
YTD	479.7	495.4	3.3%	2,692.3	2,618.2	-2.8%	138.7	138.6	-0.1%	217.1	216.4	-0.3%	159.3	152.4	-4.4%	393.8	367.8	-6.6%	4,080.8	3,988.9	-2.3%
December	91.9	96.7	5.2%	543.7	533.5	-1.9%	26.6	26.7	0.5%	44.4	45.4	2.2%	30.3	28.7	-5.3%	112.0	108.0	-3.6%	848.9	838.9	-1.2%
YTD	571.6	592.1	3.6%	3,236.0	3,151.8	-2.6%	165.3	165.3	0.0%	261.5	261.8	0.1%	189.6	181.1	-4.5%	505.8	475.8	-5.9%	4,929.7	4,827.8	-2.1%
January	89.7	91.0	1.5%	474.6	438.8	-7.5%	26.7	24.9	-6.8%	40.8	40.6	-0.4%	28.0	26.2	-6.3%	101.9	92.5	-9.3%	761.7	714.0	-6.3%
YTD	661.3	683.1	3.3%	3,710.6	3,590.6	-3.2%	191.9	190.2	-0.9%	302.3	302.5	0.1%	217.6	207.3	-4.7%	607.7	568.3	-6.5%	5,691.4	5,541.8	-2.6%
February	78.3	79.8	2.0%	371.6	342.5	-7.8%	22.4	22.3	-0.4%	37.2	36.6	-1.4%	26.1	23.9	-8.5%	82.1	75.1	-8.5%	617.7	580.3	-6.1%
YTD	739.5	762.9	3.2%	4,082.2	3,933.0	-3.7%	214.3	212.5	-0.9%	339.4	339.1	-0.1%	243.8	231.2	-5.1%	689.9	643.4	-6.7%	6,309.1	6,122.1	-3.0%
March	83.0			366.6			23.0			41.9			29.7			84.1			628.4		
YTD	822.6			4,448.8			237.3			381.4			273.5			774.0			6,937.5		
April	80.7			374.7			23.4			40.6			28.3			76.7			624.4		
YTD	903.2			4,823.5			260.7			422.0			301.8			850.7			7,561.9		
May	85.6			421.3			24.2			40.5			30.4			69.2			671.1		
YTD	988.8			5,244.8			284.9			462.4			332.2			919.9			8,233.1		
June	86.6			406.0			24.5			37.1			29.7			41.1			625.1		
YTD	1,075.4			5,650.8			309.5			499.5			361.9			961.0			8,858.1		
Total	1,075.4			5,650.8			309.5			499.5			361.9			961.0			8,858.1		

Produced by Trade and Strategy, Dairy Australia Limited

Source: Dairy Manufacturers

Please note: These reports contain data based on a combination of voluntary direct reporting from processors, and data sourced from government agencies. Retrospective adjustments are possible if new or revised data is received.

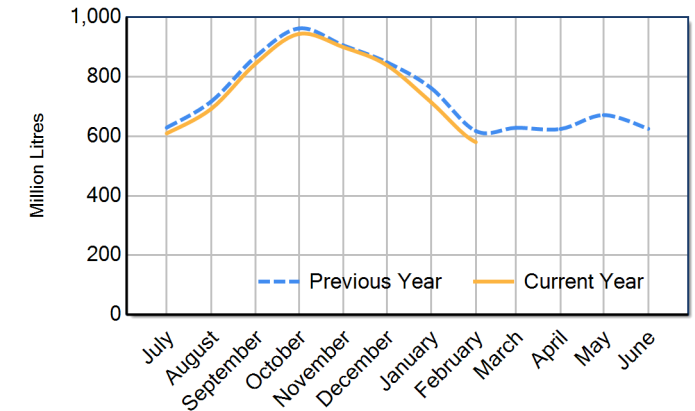
Milk production report (Litres '000s)



National

		NSW	VIC	QLD	SA	WA	TAS	Australia
Month	February-20	78,414	371,247	24,003	38,056	27,332	81,939	620,992
	February-21	78,267	371,597	22,399	37,159	26,138	82,132	617,691
	February-22	79,814	342,479	22,314	36,647	23,917	75,125	580,296
	% change	2.0%	-7.8%	-0.4%	-1.4%	-8.5%	-8.5%	-6.1%
Region Share	February-21	12.7%	60.2%	3.6%	6.0%	4.2%	13.3%	100.0%
	February-22	13.8%	59.0%	3.8%	6.3%	4.1%	12.9%	100.0%
Year To Date		NSW	VIC	QLD	SA	WA	TAS	Australia
	2019/2020	725,531	4,051,034	220,997	332,804	246,600	674,443	6,251,409
	2020/2021	739,521	4,082,190	214,316	339,440	243,761	689,865	6,309,094
	2021/2022	762,886	3,933,038	212,465	339,101	231,228	643,394	6,122,112
% change	3.2%	-3.7%	-0.9%	-0.1%	-5.1%	-6.7%	-3.0%	
Region Share	2020/2021	11.7%	64.7%	3.4%	5.4%	3.9%	10.9%	100.0%
	2021/2022	12.5%	64.2%	3.5%	5.5%	3.8%	10.5%	100.0%
Total		NSW	VIC	QLD	SA	WA	TAS	Australia
	2020/2021	1,075,444	5,650,790	309,451	499,500	361,929	961,022	8,858,135
	Region Share	12.1%	63.8%	3.5%	5.6%	4.1%	10.8%	100.0%

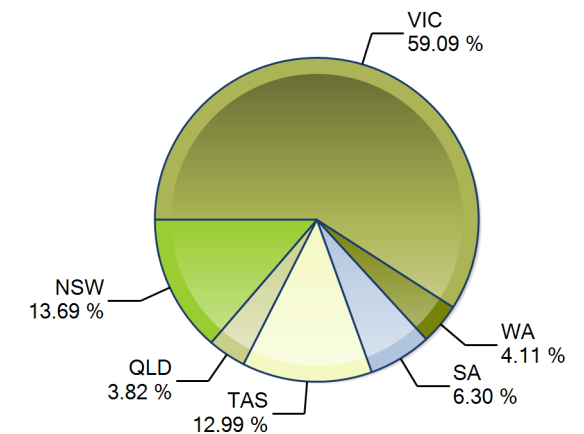
Australian Milk Production - National Total 2020/2021 & 2021/2022



Average Milkfat & Protein (%)

		NSW	VIC	QLD	SA	WA	TAS	Australia
Milkfat	February-20	3.97%	4.45%	3.96%	3.99%	3.99%	4.47%	4.32%
	February-21	4.01%	4.36%	3.97%	3.94%	4.06%	4.47%	4.28%
	February-22	4.00%	4.40%	3.90%	4.01%	4.07%	4.51%	4.30%
	% change 21/22	-0.5%	0.9%	-1.9%	1.8%	0.1%	0.9%	0.5%
Protein	February-20	3.25%	3.44%	3.24%	3.32%	3.20%	3.57%	3.41%
	February-21	3.28%	3.42%	3.31%	3.30%	3.19%	3.57%	3.40%
	February-22	3.22%	3.40%	3.19%	3.33%	3.22%	3.54%	3.37%
% change 21/22		-1.8%	-0.6%	-3.7%	0.9%	0.7%	-0.8%	-0.8%

State Share of Milk Production for the month of February 2022



Note: These reports contain data based on a combination of voluntary direct reporting from processors, and data sourced from government agencies. Retrospective adjustments are possible if new or revised data is received.