

Milk production report

19/20 by State

(Million Litres)



	New South Wales			Victoria			Queensland			South Australia			Western Australia			Tasmania			Australia		
	18/19	19/20	Var %	18/19	19/20	Var %	18/19	19/20	Var %	18/19	19/20	Var %	18/19	19/20	Var %	18/19	19/20	Var %	18/19	19/20	Var %
July	96.3	86.4	-10.2%	430.5	401.7	-6.7%	33.2	28.3	-14.6%	36.9	33.4	-9.6%	30.4	29.2	-3.9%	27.5	23.6	-14.0%	654.8	602.7	-8.0%
YTD	96.3	86.4	-10.2%	430.5	401.7	-6.7%	33.2	28.3	-14.6%	36.9	33.4	-9.6%	30.4	29.2	-3.9%	27.5	23.6	-14.0%	654.8	602.7	-8.0%
August	98.6	92.7	-6.0%	494.7	466.5	-5.7%	34.1	29.3	-14.0%	38.2	35.3	-7.5%	31.3	30.9	-1.4%	39.5	38.0	-3.8%	736.5	692.7	-5.9%
YTD	194.9	179.2	-8.1%	925.2	868.1	-6.2%	67.3	57.6	-14.3%	75.1	68.7	-8.5%	61.7	60.1	-2.6%	67.0	61.6	-8.0%	1,391.2	1,295.4	-6.9%
September	101.8	97.0	-4.7%	600.2	573.1	-4.5%	33.1	28.6	-13.6%	45.2	42.7	-5.5%	33.8	32.3	-4.4%	83.6	84.3	0.9%	897.6	858.0	-4.4%
YTD	296.7	276.2	-6.9%	1,525.4	1,441.3	-5.5%	100.3	86.2	-14.1%	120.3	111.4	-7.4%	95.5	92.4	-3.3%	150.5	145.9	-3.1%	2,288.8	2,153.4	-5.9%
October	106.5	98.9	-7.1%	669.9	630.1	-5.9%	33.7	29.1	-13.6%	52.1	49.4	-5.2%	36.6	35.0	-4.4%	117.9	119.9	1.7%	1,016.7	962.5	-5.3%
YTD	403.2	375.1	-7.0%	2,195.3	2,071.4	-5.6%	134.0	115.3	-13.9%	172.4	160.8	-6.7%	132.1	127.4	-3.6%	268.4	265.8	-1.0%	3,305.6	3,115.9	-5.7%
November	98.7	90.7	-8.1%	602.0	585.4	-2.8%	31.6	26.9	-14.8%	49.1	46.9	-4.4%	34.6	32.2	-7.0%	115.5	119.1	3.1%	931.5	901.2	-3.3%
YTD	501.9	465.8	-7.2%	2,797.3	2,656.8	-5.0%	165.6	142.3	-14.1%	221.5	207.7	-6.2%	166.8	159.6	-4.3%	384.0	385.0	0.3%	4,237.1	4,017.1	-5.2%
December	95.2	89.5	-5.9%	549.6	560.3	1.9%	31.1	26.8	-13.8%	46.2	44.5	-3.6%	32.3	30.5	-5.7%	107.1	111.2	3.9%	861.5	862.8	0.2%
YTD	597.1	555.3	-7.0%	3,347.0	3,217.1	-3.9%	196.8	169.1	-14.1%	267.6	252.2	-5.8%	199.1	190.1	-4.5%	491.0	496.2	1.0%	5,098.6	4,880.0	-4.3%
January	86.4	83.8	-3.0%	448.9	457.3	1.9%	29.5	25.4	-13.8%	41.7	40.4	-3.2%	29.7	29.2	-1.7%	91.8	96.3	5.0%	727.9	732.4	0.6%
YTD	683.5	639.1	-6.5%	3,795.8	3,674.4	-3.2%	226.3	194.6	-14.0%	309.4	292.6	-5.4%	228.7	219.3	-4.1%	582.8	592.5	1.7%	5,826.5	5,612.4	-3.7%
February	74.6	77.0	3.1%	339.6	371.3	9.3%	24.7	23.7	-4.0%	36.1	37.8	4.7%	27.2	27.3	0.3%	70.1	81.9	16.9%	572.3	619.0	8.2%
YTD	758.1	716.0	-5.5%	4,135.4	4,045.7	-2.2%	250.9	218.2	-13.0%	345.4	330.3	-4.4%	256.0	246.6	-3.7%	652.9	674.4	3.3%	6,398.7	6,231.3	-2.6%
March	82.1	82.9	0.9%	345.1	381.8	10.6%	26.4	24.2	-8.3%	40.4	41.3	2.1%	31.1	29.3	-5.9%	75.7	84.7	11.9%	600.8	644.2	7.2%
YTD	840.2	798.9	-4.9%	4,480.5	4,427.5	-1.2%	277.4	242.5	-12.6%	385.9	371.6	-3.7%	287.1	275.9	-3.9%	728.6	759.1	4.2%	6,999.5	6,875.5	-1.8%
April	78.4	77.0	-1.8%	337.1	373.7	10.9%	26.5	22.0	-16.9%	38.7	39.5	2.1%	29.7	28.7	-3.4%	71.0	78.8	11.0%	581.3	619.8	6.6%
YTD	918.6	875.9	-4.6%	4,817.5	4,801.2	-0.3%	303.8	264.5	-13.0%	424.6	411.1	-3.2%	316.8	304.6	-3.9%	799.6	838.0	4.8%	7,580.9	7,495.3	-1.1%
May	81.9	83.8	2.3%	371.2	412.6	11.2%	26.7	22.7	-15.0%	37.2	39.0	4.9%	29.5	29.7	0.8%	67.3	68.9	2.4%	613.8	656.7	7.0%
YTD	1,000.5	959.7	-4.1%	5,188.7	5,213.8	0.5%	330.6	287.2	-13.1%	461.8	450.1	-2.5%	346.2	334.3	-3.5%	866.9	906.8	4.6%	8,194.7	8,152.0	-0.5%
June	81.6	83.9	2.8%	385.3	404.9	5.1%	26.3	23.8	-9.6%	34.4	37.8	9.7%	28.2	30.0	6.7%	42.9	43.2	0.6%	598.7	623.5	4.1%
YTD	1,082.1	1,043.6	-3.6%	5,574.0	5,618.7	0.8%	356.9	311.0	-12.9%	496.2	487.9	-1.7%	374.4	364.3	-2.7%	909.8	950.0	4.4%	8,793.4	8,775.5	-0.2%
Total	1,082.1	1,043.6		5,574.0	5,618.7		356.9	311.0		496.2	487.9		374.4	364.3		909.8	950.0		8,793.4	8,775.5	

Produced by Trade and Strategy, Dairy Australia Limited

Source: Dairy Manufacturers

Please note: These reports contain data based on a combination of voluntary direct reporting from processors, and data sourced from government agencies. Retrospective adjustments are possible if new or revised data is received.

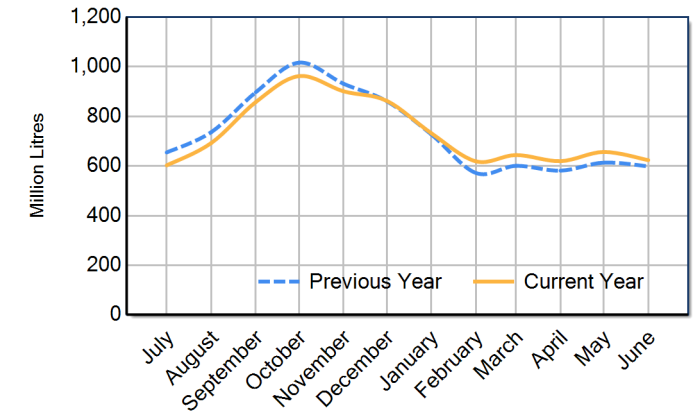
Milk production report (Litres '000s)

National



		NSW	VIC	QLD	SA	WA	TAS	Australia
Month	June-18	87,114	412,692	29,687	38,340	29,018	49,667	646,519
	June-19	81,590	385,264	26,332	34,446	28,159	42,922	598,714
	June-20	83,866	404,863	23,801	37,777	30,032	43,162	623,501
	% change	2.8%	5.1%	-9.6%	9.7%	6.7%	0.6%	4.1%
Region Share	June-19	13.6%	64.3%	4.4%	5.8%	4.7%	7.2%	100.0%
	June-20	13.5%	64.9%	3.8%	6.1%	4.8%	6.9%	100.0%
Year To Date		NSW	VIC	QLD	SA	WA	TAS	Australia
	2017/2018	1,143,600	5,979,040	399,134	504,222	385,448	913,209	9,324,653
	2018/2019	1,082,065	5,573,997	356,919	496,212	374,402	909,777	8,793,372
	2019/2020	1,043,575	5,618,696	311,003	487,922	364,300	949,988	8,775,484
% change	-3.6%	0.8%	-12.9%	-1.7%	-2.7%	4.4%	-0.2%	
Region Share	2018/2019	12.3%	63.4%	4.1%	5.6%	4.3%	10.3%	100.0%
	2019/2020	11.9%	64.0%	3.5%	5.6%	4.2%	10.8%	100.0%
Total		NSW	VIC	QLD	SA	WA	TAS	Australia
	2018/2019	1,082,065	5,573,997	356,919	496,212	374,402	909,777	8,793,372
Region Share		12.3%	63.4%	4.1%	5.6%	4.3%	10.3%	100.0%

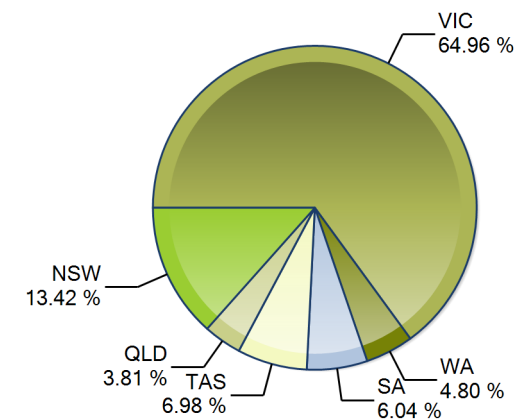
Australian Milk Production - National Total 2018/2019 & 2019/2020



Average Milkfat & Protein (%)

		NSW	VIC	QLD	SA	WA	TAS	Australia
Milkfat	June-18	4.06%	4.25%	4.22%	3.92%	4.05%	4.65%	4.23%
	June-19	4.12%	4.23%	4.18%	3.96%	4.02%	4.78%	4.23%
	June-20	4.10%	4.31%	4.18%	4.13%	4.00%	4.88%	4.29%
	% change 19/20	-0.4%	1.9%	0.0%	4.3%	-0.5%	2.1%	1.5%
Protein	June-18	3.37%	3.44%	3.35%	3.33%	3.28%	3.73%	3.44%
	June-19	3.36%	3.45%	3.36%	3.32%	3.26%	3.75%	3.44%
	June-20	3.43%	3.52%	3.40%	3.41%	3.32%	3.76%	3.51%
	% change 19/20	2.1%	2.2%	1.3%	2.8%	1.8%	0.3%	2.0%

State Share of Milk Production for the month of June 2020



Note: These reports contain data based on a combination of voluntary direct reporting from processors, and data sourced from government agencies. Retrospective adjustments are possible if new or revised data is received.