

# Milk production report

## 19/20 by State

### (Million Litres)



	New South Wales			Victoria			Queensland			South Australia			Western Australia			Tasmania			Australia		
	18/19	19/20	Var %	18/19	19/20	Var %	18/19	19/20	Var %	18/19	19/20	Var %	18/19	19/20	Var %	18/19	19/20	Var %	18/19	19/20	Var %
July	96.3	86.4	-10.3%	430.5	401.7	-6.7%	33.2	28.3	-14.6%	36.9	33.4	-9.6%	30.4	29.2	-3.9%	27.5	23.6	-14.0%	654.8	602.6	-8.0%
YTD	96.3	86.4	-10.3%	430.5	401.7	-6.7%	33.2	28.3	-14.6%	36.9	33.4	-9.6%	30.4	29.2	-3.9%	27.5	23.6	-14.0%	654.8	602.6	-8.0%
August	98.6	92.7	-6.0%	494.7	466.5	-5.7%	34.1	29.3	-14.0%	38.2	35.3	-7.5%	31.3	30.9	-1.4%	39.5	38.0	-3.8%	736.5	692.7	-5.9%
YTD	194.9	179.1	-8.1%	925.2	868.1	-6.2%	67.3	57.6	-14.3%	75.1	68.7	-8.5%	61.7	60.1	-2.6%	67.0	61.6	-8.0%	1,391.2	1,295.3	-6.9%
September	101.8	97.0	-4.7%	600.2	573.1	-4.5%	33.1	28.6	-13.6%	45.2	42.7	-5.5%	33.8	32.3	-4.4%	83.6	84.3	0.9%	897.6	858.0	-4.4%
YTD	296.7	276.1	-7.0%	1,525.4	1,441.3	-5.5%	100.3	86.2	-14.1%	120.3	111.4	-7.4%	95.5	92.4	-3.3%	150.5	145.9	-3.1%	2,288.8	2,153.3	-5.9%
October	106.5	98.9	-7.1%	669.9	630.1	-5.9%	33.7	29.1	-13.6%	52.1	49.4	-5.2%	36.6	35.0	-4.4%	117.9	119.9	1.7%	1,016.7	962.5	-5.3%
YTD	403.2	375.0	-7.0%	2,195.3	2,071.4	-5.6%	134.0	115.3	-13.9%	172.4	160.8	-6.7%	132.1	127.4	-3.6%	268.4	265.8	-1.0%	3,305.6	3,115.8	-5.7%
November	98.7	90.6	-8.1%	602.0	585.4	-2.8%	31.6	26.9	-14.8%	49.1	46.9	-4.4%	34.6	32.2	-7.0%	115.5	119.1	3.1%	931.5	901.2	-3.3%
YTD	501.9	465.6	-7.2%	2,797.3	2,656.8	-5.0%	165.6	142.3	-14.1%	221.5	207.7	-6.2%	166.8	159.6	-4.3%	384.0	385.0	0.3%	4,237.1	4,017.0	-5.2%
December	95.2	89.5	-6.0%	549.6	560.3	1.9%	31.1	26.8	-13.8%	46.2	44.5	-3.6%	32.3	30.5	-5.7%	107.1	111.2	3.9%	861.5	862.8	0.2%
YTD	597.1	555.1	-7.0%	3,347.0	3,217.1	-3.9%	196.8	169.1	-14.1%	267.6	252.2	-5.8%	199.1	190.1	-4.5%	491.0	496.2	1.0%	5,098.6	4,879.8	-4.3%
January	86.4	83.8	-3.0%	448.9	457.3	1.9%	29.5	25.4	-13.8%	41.7	40.4	-3.2%	29.7	29.2	-1.7%	91.8	96.3	5.0%	727.9	732.4	0.6%
YTD	683.5	638.9	-6.5%	3,795.8	3,674.4	-3.2%	226.3	194.6	-14.0%	309.4	292.6	-5.4%	228.7	219.3	-4.1%	582.8	592.5	1.7%	5,826.5	5,612.2	-3.7%
February	74.6	76.6	2.6%	339.6	371.3	9.3%	24.7	23.7	-4.0%	36.1	37.8	4.7%	27.2	27.3	0.3%	70.1	81.9	16.9%	572.3	618.6	8.1%
YTD	758.1	715.5	-5.6%	4,135.4	4,045.7	-2.2%	250.9	218.2	-13.0%	345.4	330.3	-4.4%	256.0	246.6	-3.7%	652.9	674.4	3.3%	6,398.7	6,230.7	-2.6%
March	82.1	82.3	0.2%	345.1	381.8	10.6%	26.4	24.2	-8.3%	40.4	41.3	2.1%	31.1	29.3	-5.9%	75.7	84.7	11.9%	600.8	643.5	7.1%
YTD	840.2	797.8	-5.1%	4,480.5	4,427.5	-1.2%	277.4	242.5	-12.6%	385.9	371.6	-3.7%	287.1	275.9	-3.9%	728.6	759.1	4.2%	6,999.5	6,874.3	-1.8%
April	78.4	76.0	-3.0%	337.1	373.7	10.9%	26.5	22.0	-16.9%	38.7	39.5	2.1%	29.7	28.7	-3.2%	71.0	78.8	11.0%	581.3	618.8	6.4%
YTD	918.6	873.8	-4.9%	4,817.5	4,801.2	-0.3%	303.8	264.5	-13.0%	424.6	411.1	-3.2%	316.8	304.6	-3.8%	799.6	838.0	4.8%	7,580.9	7,493.1	-1.2%
May	81.9	82.8	1.1%	371.2	408.1	9.9%	26.7	22.1	-17.3%	37.2	38.8	4.4%	29.5	29.7	0.9%	67.3	68.9	2.4%	613.8	650.4	6.0%
YTD	1,000.5	956.6	-4.4%	5,188.7	5,209.3	0.4%	330.6	286.6	-13.3%	461.8	450.0	-2.6%	346.2	334.3	-3.4%	866.9	906.8	4.6%	8,194.7	8,143.6	-0.6%
June	81.6			385.3			26.3			34.4			28.2			42.9			598.7		
YTD	1,082.1			5,574.0			356.9			496.2			374.4			909.8			8,793.4		
<b>Total</b>	<b>1,082.1</b>			<b>5,574.0</b>			<b>356.9</b>			<b>496.2</b>			<b>374.4</b>			<b>909.8</b>			<b>8,793.4</b>		

Produced by Trade and Strategy, Dairy Australia Limited

Source: Dairy Manufacturers

Please note: These reports contain data based on a combination of voluntary direct reporting from processors, and data sourced from government agencies. Retrospective adjustments are possible if new or revised data is received.

# Milk production report (Litres '000s)

## National

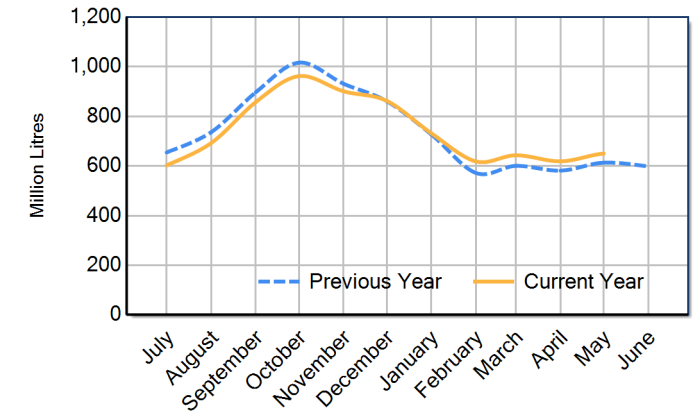


		NSW	VIC	QLD	SA	WA	TAS	Australia
<b>Month</b>	May-18	88,978	420,995	29,944	41,695	31,195	76,297	689,104
	May-19	81,876	371,221	26,749	37,209	29,456	67,262	613,773
	May-20	82,757	408,125	22,115	38,843	29,719	68,879	650,439
	<b>% change</b>	<b>1.1%</b>	<b>9.9%</b>	<b>-17.3%</b>	<b>4.4%</b>	<b>0.9%</b>	<b>2.4%</b>	<b>6.0%</b>
<b>Region Share</b>	May-19	13.3%	60.5%	4.4%	6.1%	4.8%	11.0%	100.0%
	May-20	12.7%	62.7%	3.4%	6.0%	4.6%	10.6%	100.0%
<b>Year To Date</b>		NSW	VIC	QLD	SA	WA	TAS	Australia
	2017/2018	1,056,486	5,566,348	369,448	465,882	356,430	863,541	8,678,135
	2018/2019	1,000,475	5,188,733	330,587	461,765	346,243	866,855	8,194,658
	2019/2020	956,558	5,209,299	286,583	449,959	334,332	906,831	8,143,562
<b>% change</b>	<b>-4.4%</b>	<b>0.4%</b>	<b>-13.3%</b>	<b>-2.6%</b>	<b>-3.4%</b>	<b>4.6%</b>	<b>-0.6%</b>	
<b>Region Share</b>	2018/2019	12.2%	63.3%	4.0%	5.6%	4.2%	10.6%	100.0%
	2019/2020	11.7%	64.0%	3.5%	5.5%	4.1%	11.1%	100.0%
<b>Total</b>		NSW	VIC	QLD	SA	WA	TAS	Australia
	2018/2019	1,082,065	5,573,997	356,919	496,212	374,402	909,777	8,793,372
<b>Region Share</b>		<b>12.3%</b>	<b>63.4%</b>	<b>4.1%</b>	<b>5.6%</b>	<b>4.3%</b>	<b>10.3%</b>	<b>100.0%</b>

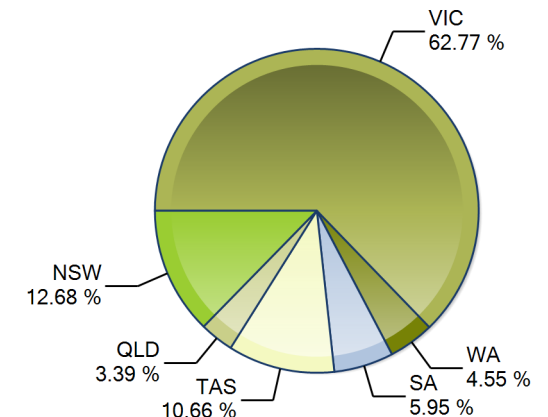
## Average Milkfat & Protein (%)

		NSW	VIC	QLD	SA	WA	TAS	Australia
<b>Milkfat</b>	May-18	4.09%	4.44%	4.22%	4.01%	4.14%	4.63%	4.37%
	May-19	4.14%	4.47%	4.19%	4.15%	4.18%	4.88%	4.43%
	May-20	4.18%	4.51%	4.24%	4.23%	4.17%	4.93%	4.47%
	<b>% change 19/20</b>	<b>0.9%</b>	<b>0.7%</b>	<b>1.3%</b>	<b>2.1%</b>	<b>-0.2%</b>	<b>1.0%</b>	<b>0.9%</b>
<b>Protein</b>	May-18	3.40%	3.50%	3.39%	3.36%	3.31%	3.80%	3.50%
	May-19	3.36%	3.46%	3.38%	3.34%	3.27%	3.76%	3.46%
	May-20	3.43%	3.55%	3.43%	3.42%	3.34%	3.83%	3.54%
	<b>% change 19/20</b>	<b>2.0%</b>	<b>2.6%</b>	<b>1.7%</b>	<b>2.5%</b>	<b>2.0%</b>	<b>1.9%</b>	<b>2.4%</b>

Australian Milk Production - National Total 2018/2019 & 2019/2020



State Share of Milk Production for the month of May 2020



Note: These reports contain data based on a combination of voluntary direct reporting from processors, and data sourced from government agencies. Retrospective adjustments are possible if new or revised data is received.