

Milk production report

19/20 by State

(Million Litres)



	New South Wales			Victoria			Queensland			South Australia			Western Australia			Tasmania			Australia		
	18/19	19/20	Var %	18/19	19/20	Var %	18/19	19/20	Var %	18/19	19/20	Var %	18/19	19/20	Var %	18/19	19/20	Var %	18/19	19/20	Var %
July	96.3	86.4	-10.3%	430.5	401.7	-6.7%	33.2	28.3	-14.6%	36.9	33.4	-9.6%	30.4	29.2	-3.9%	27.5	23.6	-14.0%	654.8	602.6	-8.0%
YTD	96.3	86.4	-10.3%	430.5	401.7	-6.7%	33.2	28.3	-14.6%	36.9	33.4	-9.6%	30.4	29.2	-3.9%	27.5	23.6	-14.0%	654.8	602.6	-8.0%
August	98.6	92.7	-6.0%	494.7	466.5	-5.7%	34.1	29.3	-14.0%	38.2	35.3	-7.5%	31.3	30.9	-1.4%	39.5	38.0	-3.8%	736.5	692.7	-5.9%
YTD	194.9	179.1	-8.1%	925.2	868.1	-6.2%	67.3	57.6	-14.3%	75.1	68.7	-8.5%	61.7	60.1	-2.6%	67.0	61.6	-8.0%	1,391.2	1,295.3	-6.9%
September	101.8	97.0	-4.7%	600.2	573.1	-4.5%	33.1	28.6	-13.6%	45.2	42.7	-5.5%	33.8	32.3	-4.4%	83.6	84.3	0.9%	897.6	858.0	-4.4%
YTD	296.7	276.1	-7.0%	1,525.4	1,441.3	-5.5%	100.3	86.2	-14.1%	120.3	111.4	-7.4%	95.5	92.4	-3.3%	150.5	145.9	-3.1%	2,288.8	2,153.3	-5.9%
October	106.5	98.9	-7.1%	669.9	630.1	-5.9%	33.7	29.1	-13.6%	52.1	49.4	-5.2%	36.6	35.0	-4.4%	117.9	119.9	1.7%	1,016.7	962.5	-5.3%
YTD	403.2	375.0	-7.0%	2,195.3	2,071.4	-5.6%	134.0	115.3	-13.9%	172.4	160.8	-6.7%	132.1	127.4	-3.6%	268.4	265.8	-1.0%	3,305.6	3,115.8	-5.7%
November	98.7	90.6	-8.1%	602.0	585.4	-2.8%	31.6	26.9	-14.8%	49.1	46.9	-4.4%	34.6	32.2	-7.0%	115.5	119.1	3.1%	931.5	901.2	-3.3%
YTD	501.9	465.6	-7.2%	2,797.3	2,656.8	-5.0%	165.6	142.3	-14.1%	221.5	207.7	-6.2%	166.8	159.6	-4.3%	384.0	385.0	0.3%	4,237.1	4,017.0	-5.2%
December	95.2	89.5	-6.0%	549.6	560.3	1.9%	31.1	26.8	-13.8%	46.2	44.5	-3.6%	32.3	30.5	-5.7%	107.1	111.2	3.9%	861.5	862.8	0.2%
YTD	597.1	555.1	-7.0%	3,347.0	3,217.1	-3.9%	196.8	169.1	-14.1%	267.6	252.2	-5.8%	199.1	190.1	-4.5%	491.0	496.2	1.0%	5,098.6	4,879.8	-4.3%
January	86.4	83.8	-3.0%	448.9	457.3	1.9%	29.5	25.4	-13.8%	41.7	40.4	-3.2%	29.7	29.2	-1.7%	91.8	96.3	5.0%	727.9	732.4	0.6%
YTD	683.5	638.9	-6.5%	3,795.8	3,674.4	-3.2%	226.3	194.6	-14.0%	309.4	292.6	-5.4%	228.7	219.3	-4.1%	582.8	592.5	1.7%	5,826.5	5,612.2	-3.7%
February	74.6	76.6	2.6%	339.6	371.3	9.3%	24.7	23.7	-4.0%	36.1	37.8	4.7%	27.2	27.3	0.3%	70.1	81.9	16.9%	572.3	618.6	8.1%
YTD	758.1	715.5	-5.6%	4,135.4	4,045.7	-2.2%	250.9	218.2	-13.0%	345.4	330.3	-4.4%	256.0	246.6	-3.7%	652.9	674.4	3.3%	6,398.7	6,230.7	-2.6%
March	82.1	82.3	0.2%	345.1	381.8	10.6%	26.4	24.2	-8.3%	40.4	41.3	2.1%	31.1	29.3	-5.8%	75.7	84.7	11.9%	600.8	643.5	7.1%
YTD	840.2	797.8	-5.1%	4,480.5	4,427.5	-1.2%	277.4	242.5	-12.6%	385.9	371.6	-3.7%	287.1	275.9	-3.9%	728.6	759.1	4.2%	6,999.5	6,874.3	-1.8%
April	78.4	76.2	-2.7%	337.1	373.8	10.9%	26.5	21.4	-19.0%	38.7	39.5	2.1%	29.7	28.7	-3.2%	71.0	78.8	11.0%	581.3	618.5	6.4%
YTD	918.6	874.0	-4.9%	4,817.5	4,801.2	-0.3%	303.8	263.9	-13.1%	424.6	411.1	-3.2%	316.8	304.6	-3.8%	799.6	838.0	4.8%	7,580.9	7,492.8	-1.2%
May	81.9			371.2			26.7			37.2			29.5			67.3			613.8		
YTD	1,000.5			5,188.7			330.6			461.8			346.2			866.9			8,194.7		
June	81.6			385.3			26.3			34.4			28.2			42.9			598.7		
YTD	1,082.1			5,574.0			356.9			496.2			374.4			909.8			8,793.4		
Total	1,082.1			5,574.0			356.9			496.2			374.4			909.8			8,793.4		

Produced by Trade and Strategy, Dairy Australia Limited

Source: Dairy Manufacturers

Please note: These reports contain data based on a combination of voluntary direct reporting from processors, and data sourced from government agencies. Retrospective adjustments are possible if new or revised data is received.

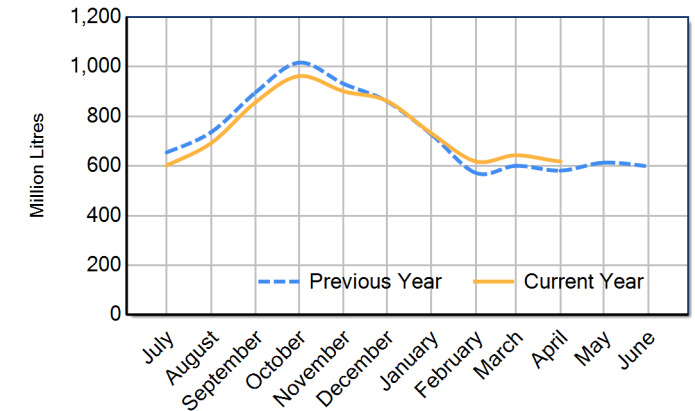
Milk production report (Litres '000s)

National



		NSW	VIC	QLD	SA	WA	TAS	Australia
Month	April-18	88,536	384,595	29,102	41,410	30,685	79,499	653,827
	April-19	78,396	337,053	26,479	38,685	29,690	71,039	581,341
	April-20	76,246	373,787	21,445	39,511	28,725	78,827	618,541
	% change	-2.7%	10.9%	-19.0%	2.1%	-3.2%	11.0%	6.4%
Region Share	April-19	13.5%	58.0%	4.6%	6.7%	5.1%	12.2%	100.0%
	April-20	12.3%	60.4%	3.5%	6.4%	4.6%	12.7%	100.0%
Year To Date		NSW	VIC	QLD	SA	WA	TAS	Australia
	2017/2018	967,509	5,145,353	339,504	424,186	325,235	787,244	7,989,031
	2018/2019	918,599	4,817,512	303,837	424,557	316,787	799,593	7,580,884
	2019/2020	873,997	4,801,243	263,912	411,110	304,625	837,952	7,492,838
% change	-4.9%	-0.3%	-13.1%	-3.2%	-3.8%	4.8%	-1.2%	
Region Share	2018/2019	12.1%	63.5%	4.0%	5.6%	4.2%	10.5%	100.0%
	2019/2020	11.7%	64.1%	3.5%	5.5%	4.1%	11.2%	100.0%
Total		NSW	VIC	QLD	SA	WA	TAS	Australia
	2018/2019	1,082,065	5,573,997	356,919	496,212	374,402	909,777	8,793,372
	Region Share	12.3%	63.4%	4.1%	5.6%	4.3%	10.3%	100.0%

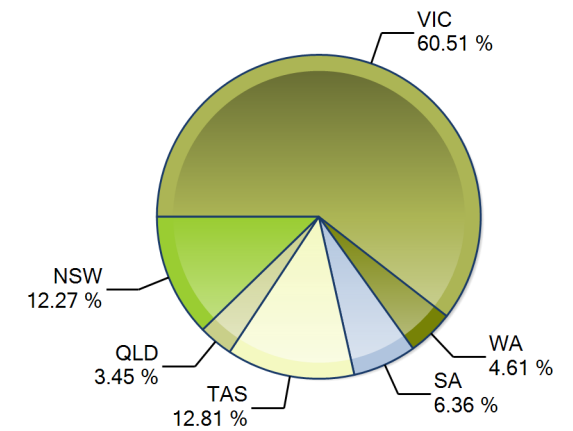
Australian Milk Production - National Total 2018/2019 & 2019/2020



Average Milkfat & Protein (%)

		NSW	VIC	QLD	SA	WA	TAS	Australia
Milkfat	April-18	4.06%	4.52%	4.13%	3.96%	4.10%	4.60%	4.39%
	April-19	4.10%	4.59%	4.12%	4.11%	4.17%	4.88%	4.49%
	April-20	4.16%	4.64%	4.14%	4.14%	4.06%	4.81%	4.52%
	% change 19/20	1.5%	0.9%	0.3%	0.8%	-2.5%	-1.3%	0.8%
Protein	April-18	3.33%	3.49%	3.36%	3.32%	3.29%	3.73%	3.47%
	April-19	3.33%	3.50%	3.36%	3.34%	3.26%	3.73%	3.47%
	April-20	3.37%	3.56%	3.38%	3.40%	3.25%	3.79%	3.54%
	% change 19/20	1.2%	1.9%	0.6%	2.0%	-0.5%	1.8%	1.8%

State Share of Milk Production for the month of April 2020



Note: These reports contain data based on a combination of voluntary direct reporting from processors, and data sourced from government agencies. Retrospective adjustments are possible if new or revised data is received.