

Milk production report

19/20 by State

(Million Litres)



	New South Wales			Victoria			Queensland			South Australia			Western Australia			Tasmania			Australia		
	18/19	19/20	Var %	18/19	19/20	Var %	18/19	19/20	Var %	18/19	19/20	Var %	18/19	19/20	Var %	18/19	19/20	Var %	18/19	19/20	Var %
July	96.3	86.4	-10.3%	430.5	401.7	-6.7%	33.2	28.3	-14.6%	36.9	33.4	-9.6%	30.4	29.2	-3.9%	27.5	23.6	-14.0%	654.8	602.6	-8.0%
YTD	96.3	86.4	-10.3%	430.5	401.7	-6.7%	33.2	28.3	-14.6%	36.9	33.4	-9.6%	30.4	29.2	-3.9%	27.5	23.6	-14.0%	654.8	602.6	-8.0%
August	98.6	92.7	-6.0%	494.7	466.5	-5.7%	34.1	29.3	-14.0%	38.2	35.3	-7.5%	31.3	30.9	-1.4%	39.5	38.0	-3.8%	736.5	692.7	-5.9%
YTD	194.9	179.1	-8.1%	925.2	868.1	-6.2%	67.3	57.6	-14.3%	75.1	68.7	-8.5%	61.7	60.1	-2.6%	67.0	61.6	-8.0%	1,391.2	1,295.3	-6.9%
September	101.8	97.0	-4.7%	600.2	573.1	-4.5%	33.1	28.6	-13.6%	45.2	42.7	-5.5%	33.8	32.3	-4.4%	83.6	84.3	0.9%	897.6	858.0	-4.4%
YTD	296.7	276.1	-7.0%	1,525.4	1,441.3	-5.5%	100.3	86.2	-14.1%	120.3	111.4	-7.4%	95.5	92.4	-3.3%	150.5	145.9	-3.1%	2,288.8	2,153.3	-5.9%
October	106.5	98.9	-7.1%	669.9	630.1	-5.9%	33.7	29.1	-13.6%	52.1	49.4	-5.2%	36.6	35.0	-4.4%	117.9	119.9	1.7%	1,016.7	962.5	-5.3%
YTD	403.2	375.0	-7.0%	2,195.3	2,071.4	-5.6%	134.0	115.3	-13.9%	172.4	160.8	-6.7%	132.1	127.4	-3.6%	268.4	265.8	-1.0%	3,305.6	3,115.8	-5.7%
November	98.7	90.6	-8.1%	602.0	585.4	-2.8%	31.6	26.9	-14.8%	49.1	46.9	-4.4%	34.6	32.2	-7.0%	115.5	119.1	3.1%	931.5	901.2	-3.3%
YTD	501.9	465.6	-7.2%	2,797.3	2,656.8	-5.0%	165.6	142.3	-14.1%	221.5	207.7	-6.2%	166.8	159.6	-4.3%	384.0	385.0	0.3%	4,237.1	4,017.0	-5.2%
December	95.2	89.5	-6.0%	549.6	560.3	1.9%	31.1	26.8	-13.8%	46.2	44.5	-3.6%	32.3	30.5	-5.7%	107.1	111.2	3.9%	861.5	862.8	0.2%
YTD	597.1	555.1	-7.0%	3,347.0	3,217.1	-3.9%	196.8	169.1	-14.1%	267.6	252.2	-5.8%	199.1	190.1	-4.5%	491.0	496.2	1.0%	5,098.6	4,879.8	-4.3%
January	86.4	83.8	-3.0%	448.9	457.3	1.9%	29.5	25.4	-13.8%	41.7	40.4	-3.2%	29.7	29.2	-1.7%	91.8	96.3	5.0%	727.9	732.4	0.6%
YTD	683.5	638.9	-6.5%	3,795.8	3,674.4	-3.2%	226.3	194.6	-14.0%	309.4	292.6	-5.4%	228.7	219.3	-4.1%	582.8	592.5	1.7%	5,826.5	5,612.2	-3.7%
February	74.6	76.7	2.8%	339.6	371.3	9.3%	24.7	23.7	-4.0%	36.1	37.8	4.7%	27.2	27.3	0.3%	70.1	81.9	16.9%	572.3	618.7	8.1%
YTD	758.1	715.6	-5.6%	4,135.4	4,045.7	-2.2%	250.9	218.2	-13.0%	345.4	330.3	-4.4%	256.0	246.6	-3.7%	652.9	674.4	3.3%	6,398.7	6,230.9	-2.6%
March	82.1	82.5	0.5%	345.1	381.7	10.6%	26.4	23.8	-10.0%	40.4	41.3	2.1%	31.1	29.2	-6.0%	75.7	84.7	11.9%	600.8	643.3	7.1%
YTD	840.2	798.2	-5.0%	4,480.5	4,427.4	-1.2%	277.4	242.0	-12.7%	385.9	371.6	-3.7%	287.1	275.8	-3.9%	728.6	759.1	4.2%	6,999.5	6,874.2	-1.8%
April	78.4			337.1			26.5			38.7			29.7			71.0			581.3		
YTD	918.6			4,817.5			303.8			424.6			316.8			799.6			7,580.9		
May	81.9			371.2			26.7			37.2			29.5			67.3			613.8		
YTD	1,000.5			5,188.7			330.6			461.8			346.2			866.9			8,194.7		
June	81.6			385.3			26.3			34.4			28.2			42.9			598.7		
YTD	1,082.1			5,574.0			356.9			496.2			374.4			909.8			8,793.4		
Total	1,082.1			5,574.0			356.9			496.2			374.4			909.8			8,793.4		

Produced by Trade and Strategy, Dairy Australia Limited

Source: Dairy Manufacturers

Please note: These reports contain data based on a combination of voluntary direct reporting from processors, and data sourced from government agencies. Retrospective adjustments are possible if new or revised data is received.

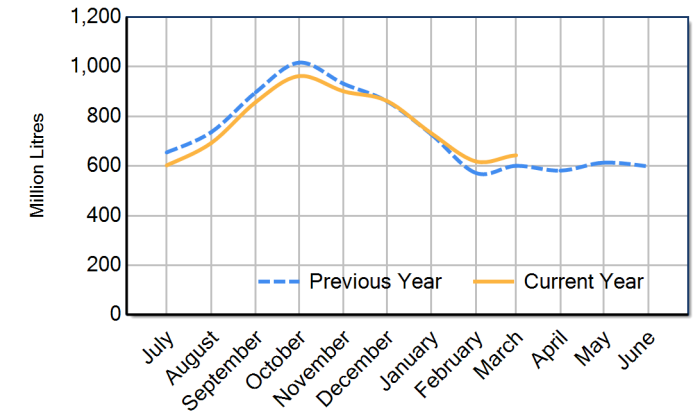
Milk production report (Litres '000s)

National



		NSW	VIC	QLD	SA	WA	TAS	Australia
Month	March-18	88,331	382,348	30,904	42,605	31,992	77,148	653,326
	March-19	82,132	345,063	26,419	40,441	31,108	75,654	600,818
	March-20	82,525	381,743	23,781	41,288	29,238	84,682	643,258
	% change	0.5%	10.6%	-10.0%	2.1%	-6.0%	11.9%	7.1%
Region Share	March-19	13.7%	57.4%	4.4%	6.7%	5.2%	12.6%	100.0%
	March-20	12.8%	59.3%	3.7%	6.4%	4.5%	13.2%	100.0%
Year To Date		NSW	VIC	QLD	SA	WA	TAS	Australia
	2017/2018	878,973	4,760,758	310,402	382,776	294,549	707,745	7,335,204
	2018/2019	840,203	4,480,459	277,359	385,872	287,097	728,554	6,999,543
	2019/2020	798,156	4,427,426	242,023	371,599	275,838	759,125	6,874,166
% change	-5.0%	-1.2%	-12.7%	-3.7%	-3.9%	4.2%	-1.8%	
Region Share	2018/2019	12.0%	64.0%	4.0%	5.5%	4.1%	10.4%	100.0%
	2019/2020	11.6%	64.4%	3.5%	5.4%	4.0%	11.0%	100.0%
Total		NSW	VIC	QLD	SA	WA	TAS	Australia
	2018/2019	1,082,065	5,573,997	356,919	496,212	374,402	909,777	8,793,372
Region Share		12.3%	63.4%	4.1%	5.6%	4.3%	10.3%	100.0%

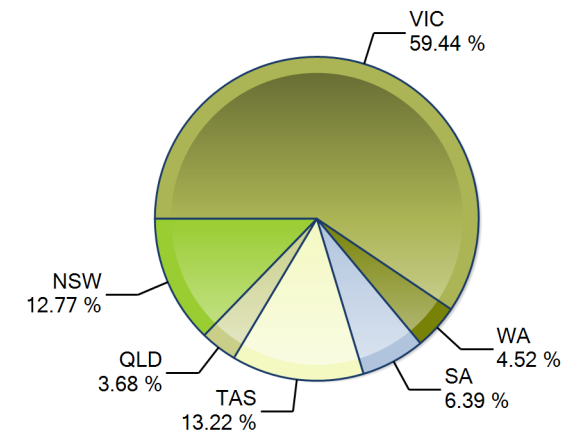
Australian Milk Production - National Total 2018/2019 & 2019/2020



Average Milkfat & Protein (%)

		NSW	VIC	QLD	SA	WA	TAS	Australia
Milkfat	March-18	4.01%	4.51%	4.07%	3.89%	4.04%	4.57%	4.37%
	March-19	4.06%	4.57%	4.10%	4.07%	4.09%	4.73%	4.44%
	March-20	4.09%	4.57%	4.04%	4.05%	4.07%	4.67%	4.44%
	% change 19/20	0.9%	0.0%	-1.5%	-0.6%	-0.6%	-1.3%	0.1%
Protein	March-18	3.30%	3.49%	3.32%	3.31%	3.28%	3.61%	3.45%
	March-19	3.27%	3.47%	3.30%	3.31%	3.22%	3.60%	3.43%
	March-20	3.33%	3.56%	3.31%	3.39%	3.22%	3.73%	3.52%
% change 19/20	1.9%	2.5%	0.3%	2.5%	-0.1%	3.7%	2.6%	

State Share of Milk Production for the month of March 2020



Note: These reports contain data based on a combination of voluntary direct reporting from processors, and data sourced from government agencies. Retrospective adjustments are possible if new or revised data is received.