

Milk production report

19/20 by State

(Million Litres)



	New South Wales			Victoria			Queensland			South Australia			Western Australia			Tasmania			Australia		
	18/19	19/20	Var %	18/19	19/20	Var %	18/19	19/20	Var %	18/19	19/20	Var %	18/19	19/20	Var %	18/19	19/20	Var %	18/19	19/20	Var %
July	96.3	86.4	-10.3%	430.5	401.7	-6.7%	33.2	28.3	-14.6%	36.9	33.4	-9.6%	30.4	29.2	-3.9%	27.5	23.6	-14.0%	654.8	602.6	-8.0%
YTD	96.3	86.4	-10.3%	430.5	401.7	-6.7%	33.2	28.3	-14.6%	36.9	33.4	-9.6%	30.4	29.2	-3.9%	27.5	23.6	-14.0%	654.8	602.6	-8.0%
August	98.6	92.7	-6.0%	494.7	466.5	-5.7%	34.1	29.3	-14.0%	38.2	35.3	-7.5%	31.3	30.9	-1.4%	39.5	38.0	-3.8%	736.5	692.7	-5.9%
YTD	194.9	179.1	-8.1%	925.2	868.1	-6.2%	67.3	57.6	-14.3%	75.1	68.7	-8.5%	61.7	60.1	-2.6%	67.0	61.6	-8.0%	1,391.2	1,295.3	-6.9%
September	101.8	97.0	-4.7%	600.2	573.1	-4.5%	33.1	28.6	-13.6%	45.2	42.7	-5.5%	33.8	32.3	-4.4%	83.6	84.3	0.9%	897.6	858.0	-4.4%
YTD	296.7	276.1	-7.0%	1,525.4	1,441.3	-5.5%	100.3	86.2	-14.1%	120.3	111.4	-7.4%	95.5	92.4	-3.3%	150.5	145.9	-3.1%	2,288.8	2,153.3	-5.9%
October	106.5	98.9	-7.1%	669.9	630.1	-5.9%	33.7	29.1	-13.6%	52.1	49.4	-5.2%	36.6	35.0	-4.4%	117.9	119.9	1.7%	1,016.7	962.5	-5.3%
YTD	403.2	375.0	-7.0%	2,195.3	2,071.4	-5.6%	134.0	115.3	-13.9%	172.4	160.8	-6.7%	132.1	127.4	-3.6%	268.4	265.8	-1.0%	3,305.6	3,115.8	-5.7%
November	98.7	90.6	-8.1%	602.0	585.4	-2.8%	31.6	26.9	-14.8%	49.1	46.9	-4.4%	34.6	32.2	-7.0%	115.5	119.1	3.1%	931.5	901.2	-3.3%
YTD	501.9	465.6	-7.2%	2,797.3	2,656.8	-5.0%	165.6	142.3	-14.1%	221.5	207.7	-6.2%	166.8	159.6	-4.3%	384.0	385.0	0.3%	4,237.1	4,017.0	-5.2%
December	95.2	89.5	-6.0%	549.6	560.3	1.9%	31.1	26.8	-13.8%	46.2	44.5	-3.6%	32.3	30.5	-5.7%	107.1	111.2	3.9%	861.5	862.8	0.2%
YTD	597.1	555.1	-7.0%	3,347.0	3,217.1	-3.9%	196.8	169.1	-14.1%	267.6	252.2	-5.8%	199.1	190.1	-4.5%	491.0	496.2	1.0%	5,098.6	4,879.8	-4.3%
January	86.4	83.5	-3.3%	448.9	457.3	1.9%	29.5	25.4	-13.8%	41.7	40.4	-3.2%	29.7	29.2	-1.7%	91.8	96.3	5.0%	727.9	732.2	0.6%
YTD	683.5	638.7	-6.6%	3,795.8	3,674.4	-3.2%	226.3	194.6	-14.0%	309.4	292.5	-5.4%	228.7	219.3	-4.1%	582.8	592.5	1.7%	5,826.5	5,611.9	-3.7%
February	74.6	76.6	2.7%	339.6	371.3	9.3%	24.7	23.5	-4.9%	36.1	37.8	4.7%	27.2	27.4	0.5%	70.1	81.9	16.8%	572.3	618.4	8.1%
YTD	758.1	715.3	-5.6%	4,135.4	4,045.7	-2.2%	250.9	218.0	-13.1%	345.4	330.3	-4.4%	256.0	246.6	-3.7%	652.9	674.4	3.3%	6,398.7	6,230.3	-2.6%
March	82.1			345.1			26.4			40.4			31.1			75.7			600.8		
YTD	840.2			4,480.5			277.4			385.9			287.1			728.6			6,999.5		
April	78.4			337.1			26.5			38.7			29.7			71.0			581.3		
YTD	918.6			4,817.5			303.8			424.6			316.8			799.6			7,580.9		
May	81.9			371.2			26.7			37.2			29.5			67.3			613.8		
YTD	1,000.5			5,188.7			330.6			461.8			346.2			866.9			8,194.7		
June	81.6			385.3			26.3			34.4			28.2			42.9			598.7		
YTD	1,082.1			5,574.0			356.9			496.2			374.4			909.8			8,793.4		
Total	1,082.1			5,574.0			356.9			496.2			374.4			909.8			8,793.4		

Produced by Trade and Strategy, Dairy Australia Limited

Source: Dairy Manufacturers

Please note: The numbers have not been leap year adjusted.

These reports contain data based on a combination of voluntary direct reporting from processors, and data sourced from government agencies. Retrospective adjustments are possible if new or revised data is received.

Milk production report (Litres '000s)

National

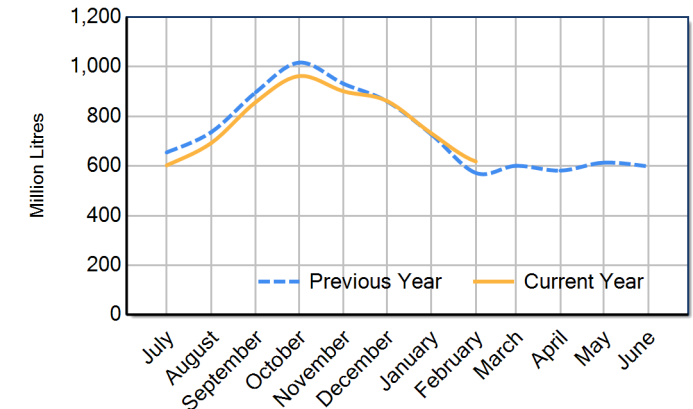


		NSW	VIC	QLD	SA	WA	TAS	Australia
Month	February-18	81,187	390,644	28,581	37,479	28,886	70,197	636,975
	February-19	74,619	339,566	24,676	36,068	27,240	70,082	572,251
	February-20	76,616	371,285	23,474	37,755	27,375	81,880	618,385
	% change	2.7%	9.3%	-4.9%	4.7%	0.5%	16.8%	8.1%
Region Share	February-19	13.0%	59.3%	4.3%	6.3%	4.8%	12.2%	100.0%
	February-20	12.4%	60.0%	3.8%	6.1%	4.4%	13.2%	100.0%
Year To Date		NSW	VIC	QLD	SA	WA	TAS	Australia
	2017/2018	790,642	4,378,410	279,499	340,172	262,558	630,597	6,681,878
	2018/2019	758,071	4,135,396	250,939	345,431	255,988	652,900	6,398,726
	2019/2020	715,281	4,045,686	218,034	330,303	246,642	674,383	6,230,330
	% change	-5.6%	-2.2%	-13.1%	-4.4%	-3.7%	3.3%	-2.6%
Region Share	2018/2019	11.8%	64.6%	3.9%	5.4%	4.0%	10.2%	100.0%
	2019/2020	11.5%	64.9%	3.5%	5.3%	4.0%	10.8%	100.0%
Total		NSW	VIC	QLD	SA	WA	TAS	Australia
	2018/2019	1,082,065	5,573,997	356,919	496,212	374,402	909,777	8,793,372
	Region Share	12.3%	63.4%	4.1%	5.6%	4.3%	10.3%	100.0%

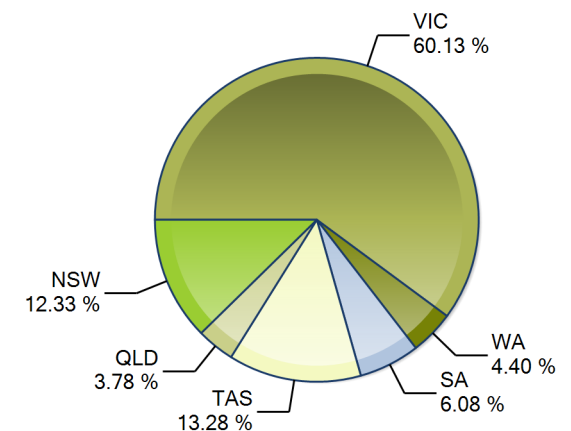
Average Milkfat & Protein (%)

		NSW	VIC	QLD	SA	WA	TAS	Australia
Milkfat	February-18	3.90%	4.30%	4.01%	3.75%	3.98%	4.41%	4.20%
	February-19	3.92%	4.44%	4.02%	3.97%	4.04%	4.60%	4.32%
	February-20	3.97%	4.44%	3.97%	3.99%	3.99%	4.47%	4.32%
	% change 19/20	1.2%	0.1%	-1.1%	0.6%	-1.2%	-3.0%	-0.1%
Protein	February-18	3.24%	3.36%	3.30%	3.25%	3.22%	3.44%	3.34%
	February-19	3.19%	3.36%	3.25%	3.26%	3.19%	3.47%	3.33%
	February-20	3.24%	3.44%	3.25%	3.32%	3.20%	3.57%	3.41%
	% change 19/20	1.5%	2.4%	0.1%	1.9%	0.2%	3.1%	2.3%

Australian Milk Production - National Total 2018/2019 & 2019/2020



State Share of Milk Production for the month of February 2020



Note: The numbers have not been leap year adjusted
 These reports contain data based on a combination of voluntary direct reporting from processors, and data sourced from government agencies. Retrospective adjustments are possible if new or revised data is received.