

# Milk production report

## 19/20 by State

### (Million Litres)



	New South Wales			Victoria			Queensland			South Australia			Western Australia			Tasmania			Australia		
	18/19	19/20	Var %	18/19	19/20	Var %	18/19	19/20	Var %	18/19	19/20	Var %	18/19	19/20	Var %	18/19	19/20	Var %	18/19	19/20	Var %
July	96.3	86.4	-10.3%	430.5	402.5	-6.5%	33.2	28.3	-14.6%	36.9	32.5	-11.9%	30.4	29.2	-3.9%	27.5	23.6	-14.0%	654.8	602.6	-8.0%
YTD	96.3	86.4	-10.3%	430.5	402.5	-6.5%	33.2	28.3	-14.6%	36.9	32.5	-11.9%	30.4	29.2	-3.9%	27.5	23.6	-14.0%	654.8	602.6	-8.0%
August	98.6	92.7	-6.0%	494.7	467.5	-5.5%	34.1	29.3	-14.0%	38.2	34.3	-10.3%	31.3	30.9	-1.4%	39.5	38.0	-3.8%	736.5	692.7	-5.9%
YTD	194.9	179.1	-8.1%	925.2	870.1	-6.0%	67.3	57.6	-14.3%	75.1	66.8	-11.1%	61.7	60.1	-2.6%	67.0	61.6	-8.0%	1,391.2	1,295.3	-6.9%
September	101.8	97.0	-4.7%	600.2	575.4	-4.1%	33.1	28.2	-14.7%	45.2	40.4	-10.5%	33.8	32.3	-4.4%	83.6	84.3	0.9%	897.6	857.6	-4.5%
YTD	296.7	276.1	-7.0%	1,525.4	1,445.5	-5.2%	100.3	85.9	-14.4%	120.3	107.2	-10.9%	95.5	92.4	-3.3%	150.5	145.9	-3.1%	2,288.8	2,152.9	-5.9%
October	106.5	97.9	-8.1%	669.9	632.9	-5.5%	33.7	28.7	-14.7%	52.1	46.7	-10.3%	36.6	35.0	-4.4%	117.9	119.9	1.7%	1,016.7	961.2	-5.5%
YTD	403.2	374.0	-7.3%	2,195.3	2,078.4	-5.3%	134.0	114.6	-14.5%	172.4	154.0	-10.7%	132.1	127.4	-3.6%	268.4	265.8	-1.0%	3,305.6	3,114.2	-5.8%
November	98.7	90.0	-8.8%	602.0	588.0	-2.3%	31.6	26.6	-15.8%	49.1	44.2	-9.9%	34.6	32.2	-7.0%	115.5	119.0	3.0%	931.5	899.9	-3.4%
YTD	501.9	464.0	-7.6%	2,797.3	2,666.3	-4.7%	165.6	141.2	-14.7%	221.5	198.2	-10.5%	166.8	159.6	-4.3%	384.0	384.8	0.2%	4,237.1	4,014.1	-5.3%
December	95.2			549.6			31.1			46.2			32.3			107.1			861.5		
YTD	597.1			3,347.0			196.8			267.6			199.1			491.0			5,098.6		
January	86.4			448.9			29.5			41.7			29.7			91.8			727.9		
YTD	683.5			3,795.8			226.3			309.4			228.7			582.8			5,826.5		
February	74.6			339.6			24.7			36.1			27.2			70.1			572.3		
YTD	758.1			4,135.4			250.9			345.4			256.0			652.9			6,398.7		
March	82.1			345.1			26.4			40.4			31.1			75.7			600.8		
YTD	840.2			4,480.5			277.4			385.9			287.1			728.6			6,999.5		
April	78.4			337.1			26.5			38.7			29.7			71.0			581.3		
YTD	918.6			4,817.5			303.8			424.6			316.8			799.6			7,580.9		
May	81.9			371.2			26.7			37.2			29.5			67.3			613.8		
YTD	1,000.5			5,188.7			330.6			461.8			346.2			866.9			8,194.7		
June	81.6			385.3			26.3			34.4			28.2			42.9			598.7		
YTD	1,082.1			5,574.0			356.9			496.2			374.4			909.8			8,793.4		
<b>Total</b>	<b>1,082.1</b>			<b>5,574.0</b>			<b>356.9</b>			<b>496.2</b>			<b>374.4</b>			<b>909.8</b>			<b>8,793.4</b>		

Produced by Trade and Strategy, Dairy Australia Limited

Source: Dairy Manufacturers

Please note: These reports contain data based on a combination of voluntary direct reporting from processors, and data sourced from government agencies. Retrospective adjustments are possible if new or revised data is received.

# Milk production report (Litres '000s)

## National

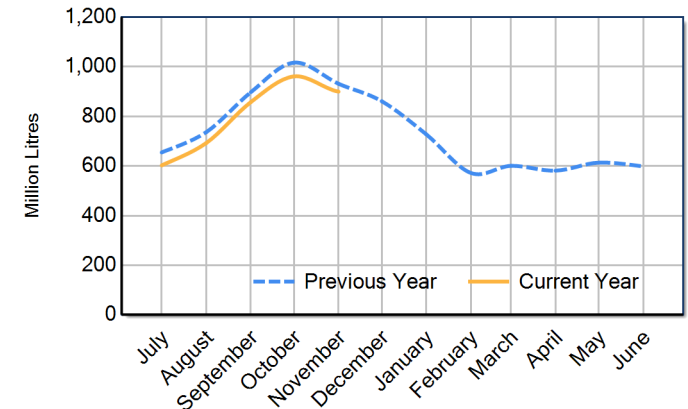


		NSW	VIC	QLD	SA	WA	TAS	Australia
<b>Month</b>	November-17	102,414	649,432	36,065	47,864	35,179	113,416	984,371
	November-18	98,669	602,033	31,612	49,072	34,621	115,519	931,526
	November-19	89,966	587,957	26,633	44,209	32,197	118,981	899,943
	<b>% change</b>	<b>-8.8%</b>	<b>-2.3%</b>	<b>-15.8%</b>	<b>-9.9%</b>	<b>-7.0%</b>	<b>3.0%</b>	<b>-3.4%</b>
<b>Region Share</b>	November-18	10.6%	64.6%	3.4%	5.3%	3.7%	12.4%	100.0%
	November-19	10.0%	65.3%	3.0%	4.9%	3.6%	13.2%	100.0%
<b>Year To Date</b>		NSW	VIC	QLD	SA	WA	TAS	Australia
	2017/2018	515,422	2,892,408	183,437	213,776	169,049	368,780	4,342,872
	2018/2019	501,916	2,797,349	165,649	221,465	166,770	383,953	4,237,103
	2019/2020	463,974	2,666,312	141,230	198,163	159,619	384,825	4,014,124
<b>% change</b>	<b>-7.6%</b>	<b>-4.7%</b>	<b>-14.7%</b>	<b>-10.5%</b>	<b>-4.3%</b>	<b>0.2%</b>	<b>-5.3%</b>	
<b>Region Share</b>	2018/2019	11.8%	66.0%	3.9%	5.2%	3.9%	9.1%	100.0%
	2019/2020	11.6%	66.4%	3.5%	4.9%	4.0%	9.6%	100.0%
<b>Total</b>		NSW	VIC	QLD	SA	WA	TAS	Australia
	2018/2019	1,082,065	5,573,997	356,919	496,212	374,402	909,777	8,793,372
	<b>Region Share</b>	<b>12.3%</b>	<b>63.4%</b>	<b>4.1%</b>	<b>5.6%</b>	<b>4.3%</b>	<b>10.3%</b>	<b>100.0%</b>

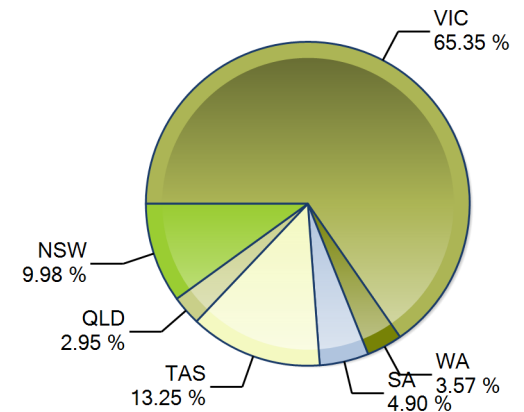
## Average Milkfat & Protein (%)

		NSW	VIC	QLD	SA	WA	TAS	Australia
<b>Milkfat</b>	November-17	3.88%	3.92%	3.93%	3.69%	3.89%	4.03%	3.92%
	November-18	3.87%	4.02%	3.92%	3.74%	3.86%	4.14%	3.99%
	November-19	3.95%	4.02%	3.88%	3.77%	3.88%	4.10%	4.01%
	<b>% change 19/20</b>	<b>2.3%</b>	<b>0.1%</b>	<b>-0.9%</b>	<b>0.8%</b>	<b>0.5%</b>	<b>-0.9%</b>	<b>0.3%</b>
<b>Protein</b>	November-17	3.25%	3.33%	3.29%	3.18%	3.24%	3.40%	3.31%
	November-18	3.19%	3.34%	3.22%	3.21%	3.28%	3.40%	3.32%
	November-19	3.26%	3.41%	3.24%	3.28%	3.29%	3.50%	3.39%
<b>% change 19/20</b>	<b>2.2%</b>	<b>2.0%</b>	<b>0.7%</b>	<b>2.0%</b>	<b>0.3%</b>	<b>3.0%</b>	<b>2.1%</b>	

Australian Milk Production - National Total 2018/2019 & 2019/2020



State Share of Milk Production for the month of November 2019



Note: These reports contain data based on a combination of voluntary direct reporting from processors, and data sourced from government agencies. Retrospective adjustments are possible if new or revised data is received.