

AN OVERVIEW OF THE ARGENTINE DAIRY SECTOR

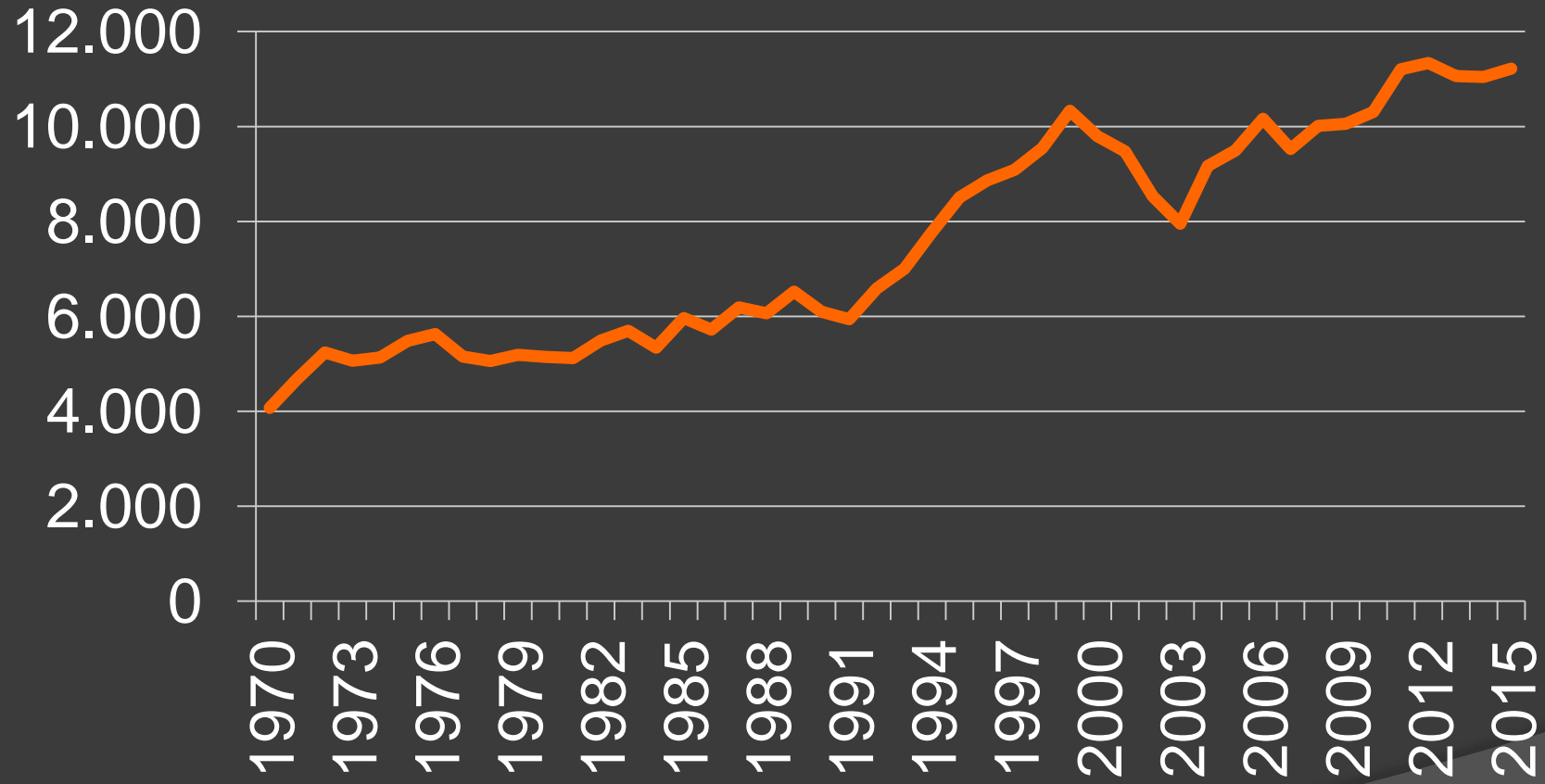
Ricardo James

Geographical location of Argentina





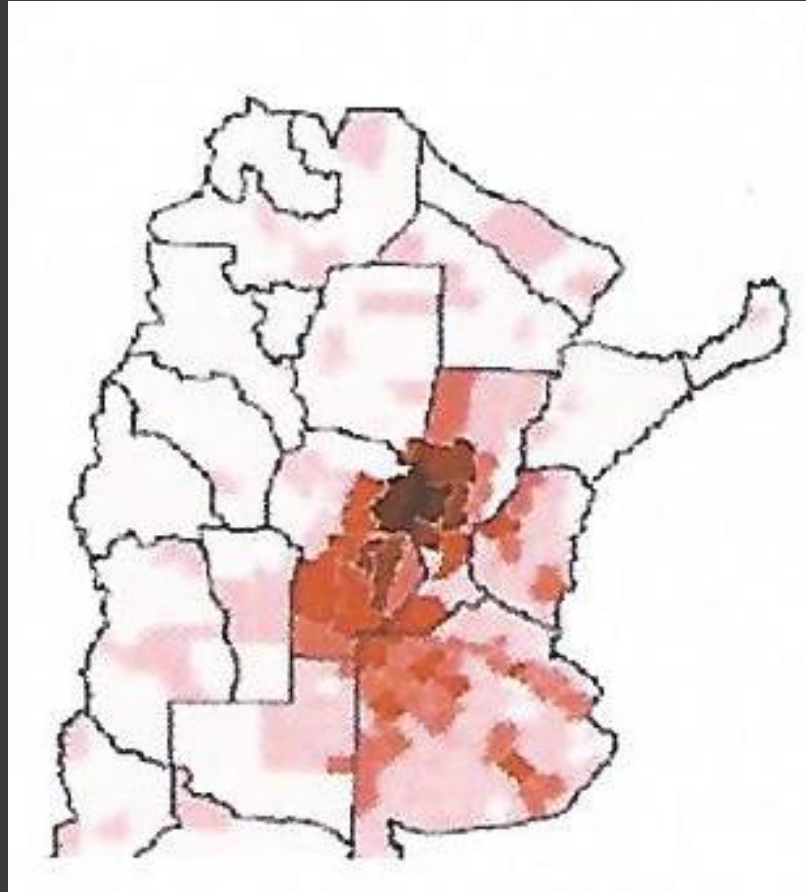
Argentina Milk Production



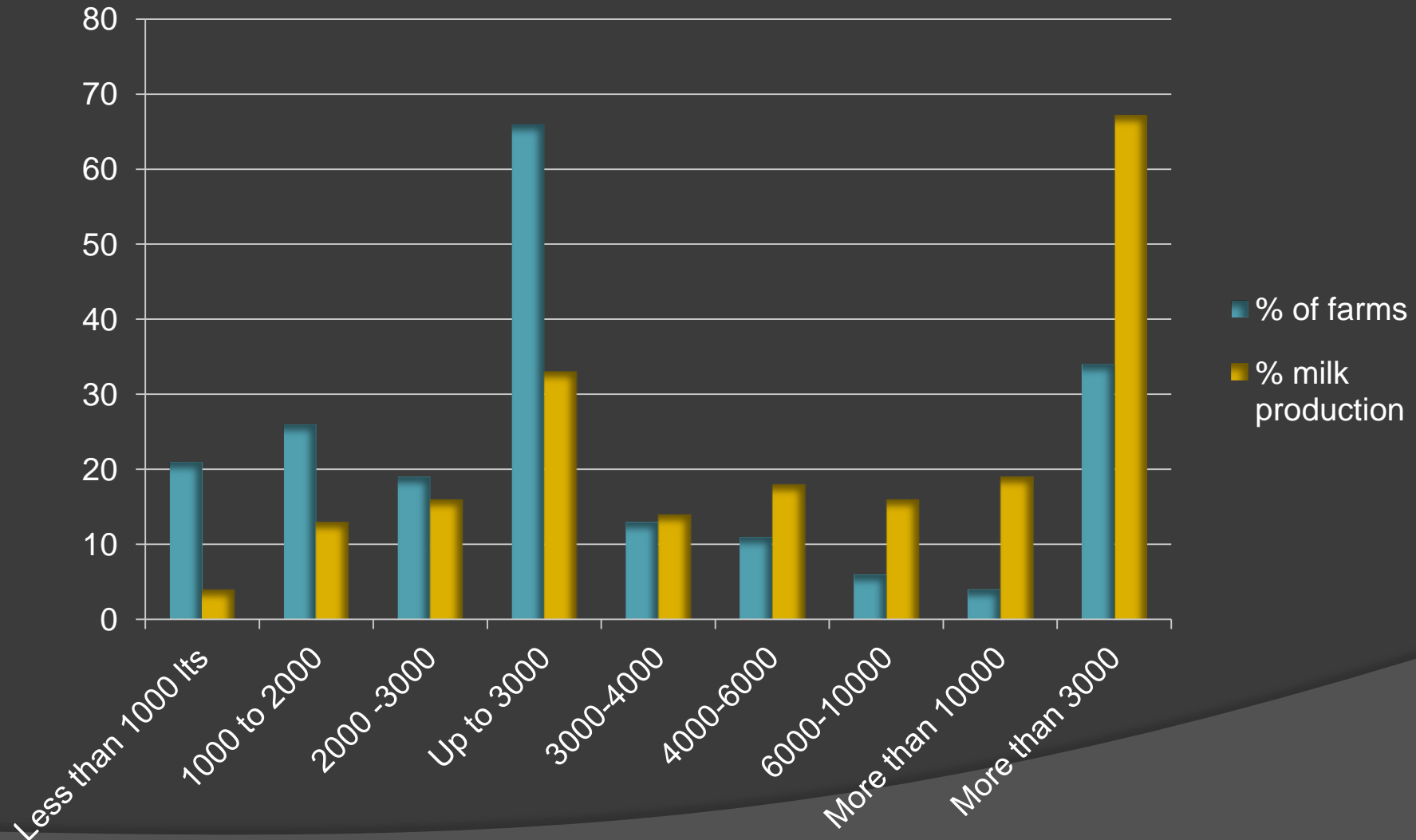
Argentina Milk Production

Year	Production
1975	5.480
1980	5.147
1985	5.962
1990	6.093
1995	8.507
2000	9.794
2005	9.493
2010	10.308
2015	11.216

Dairy Farming



Number of Dairy Farms per Level of Daily Milk Production

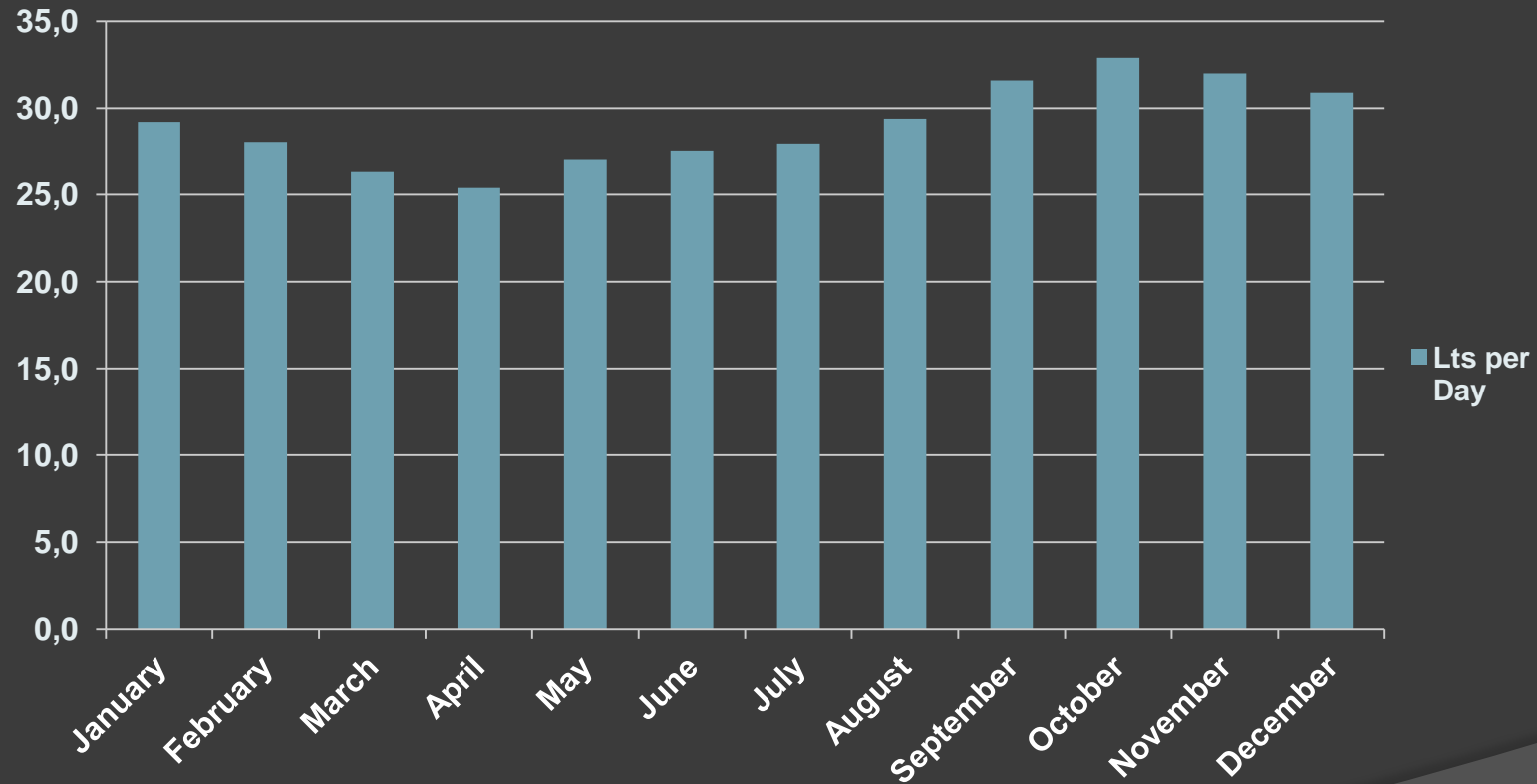


Percentage of Dairy Farms Ranked by Daily Milk Production

Litres x day	% of farms	% milk production
Less than de 1000 lts	21	4
1000 to 2000	26	13
2000 -3000	19	16
Up to 3000	66	33
3000-4000	13	14
4000-6000	11	18
6000-10000	6	16
More than 10000	4	19
More than 3000	34	67

Average Seasonal Milk Intake.

Millions of Lts per Day

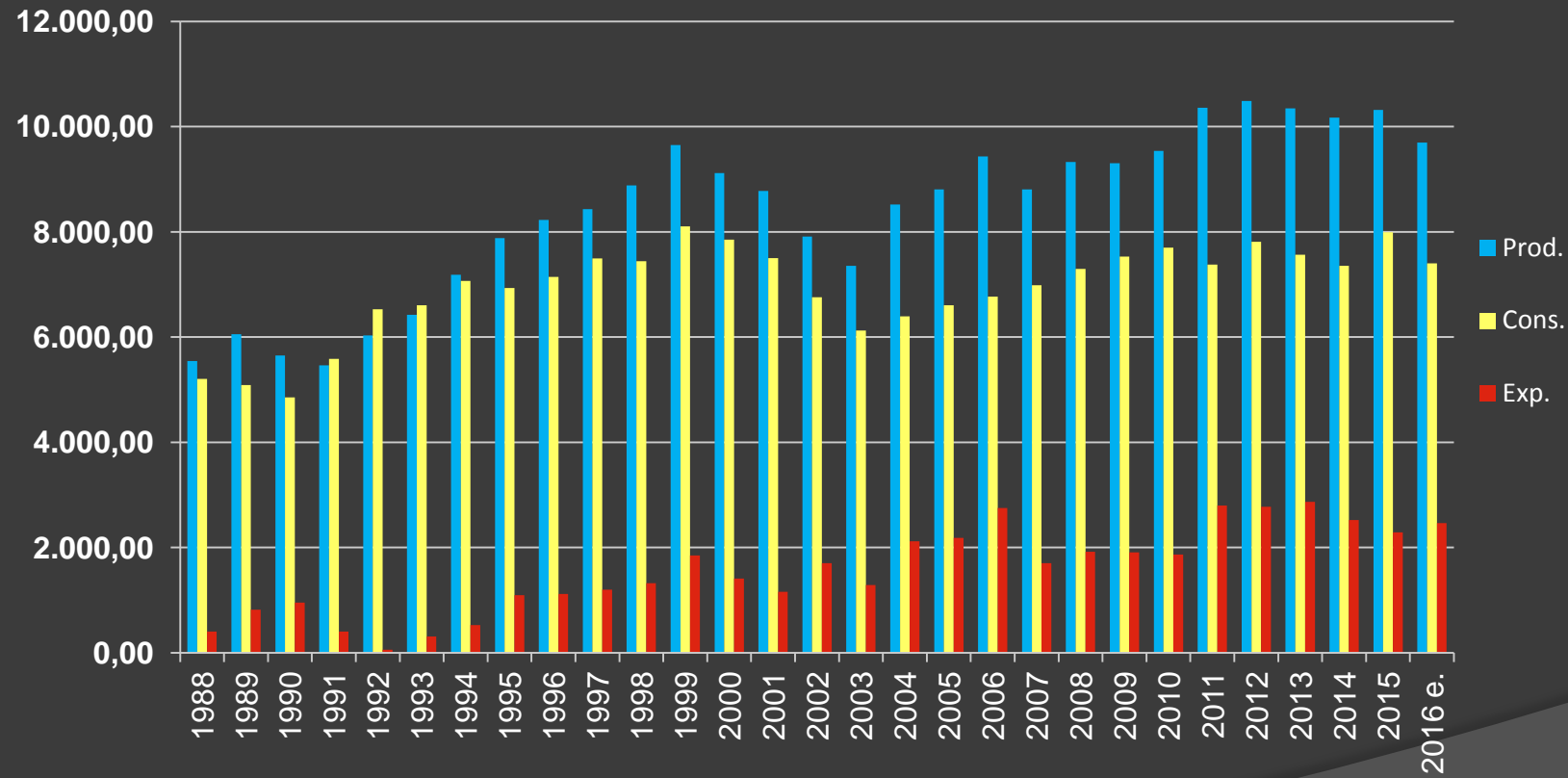


Average Seasonal Milk Intake.

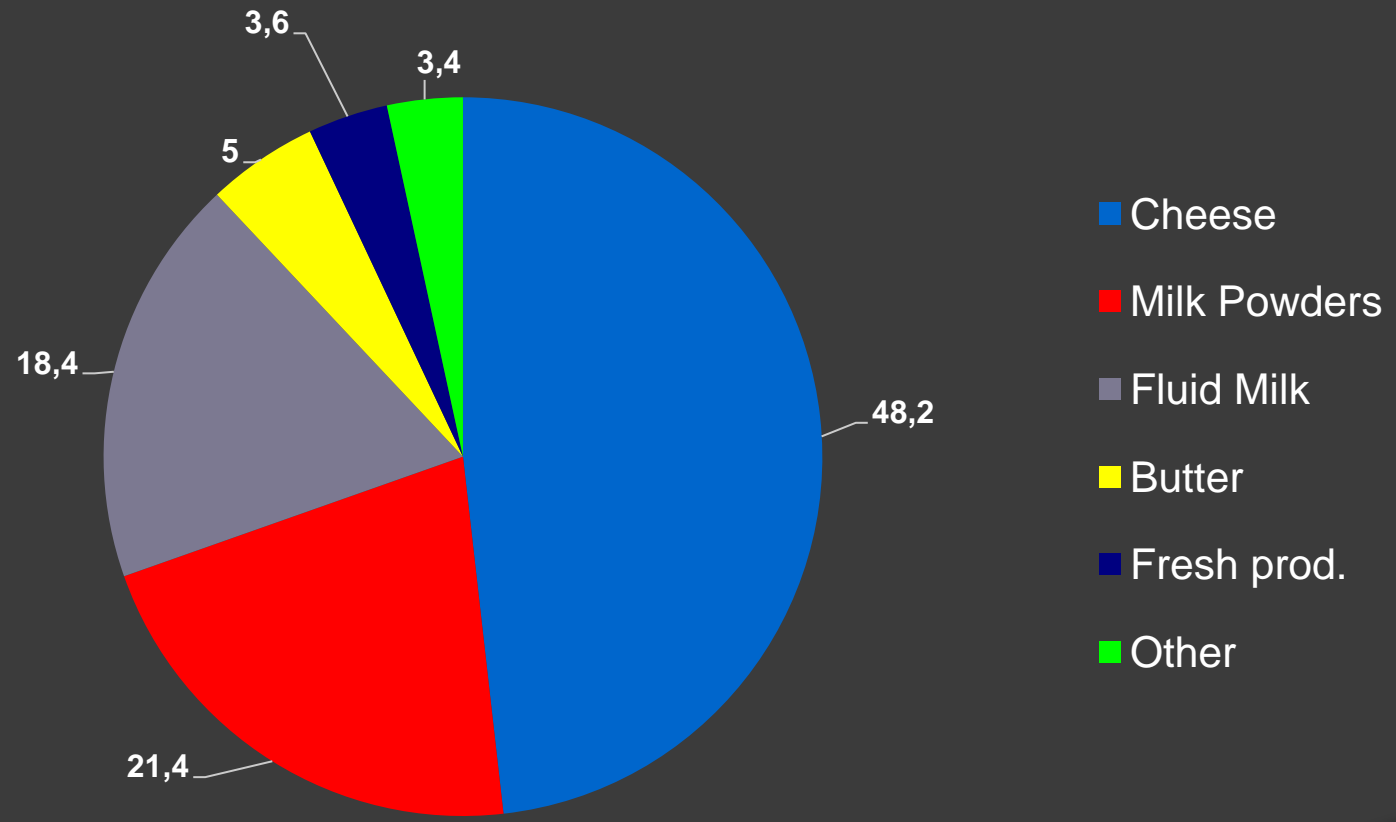
Millions of Lts per Day

Month	Lts per day
January	29,2
February	28
March	26,3
April	25,4
May	27
June	27,5
July	27,9
August	29,4
September	31,6
October	32,9
November	32
December	30,9

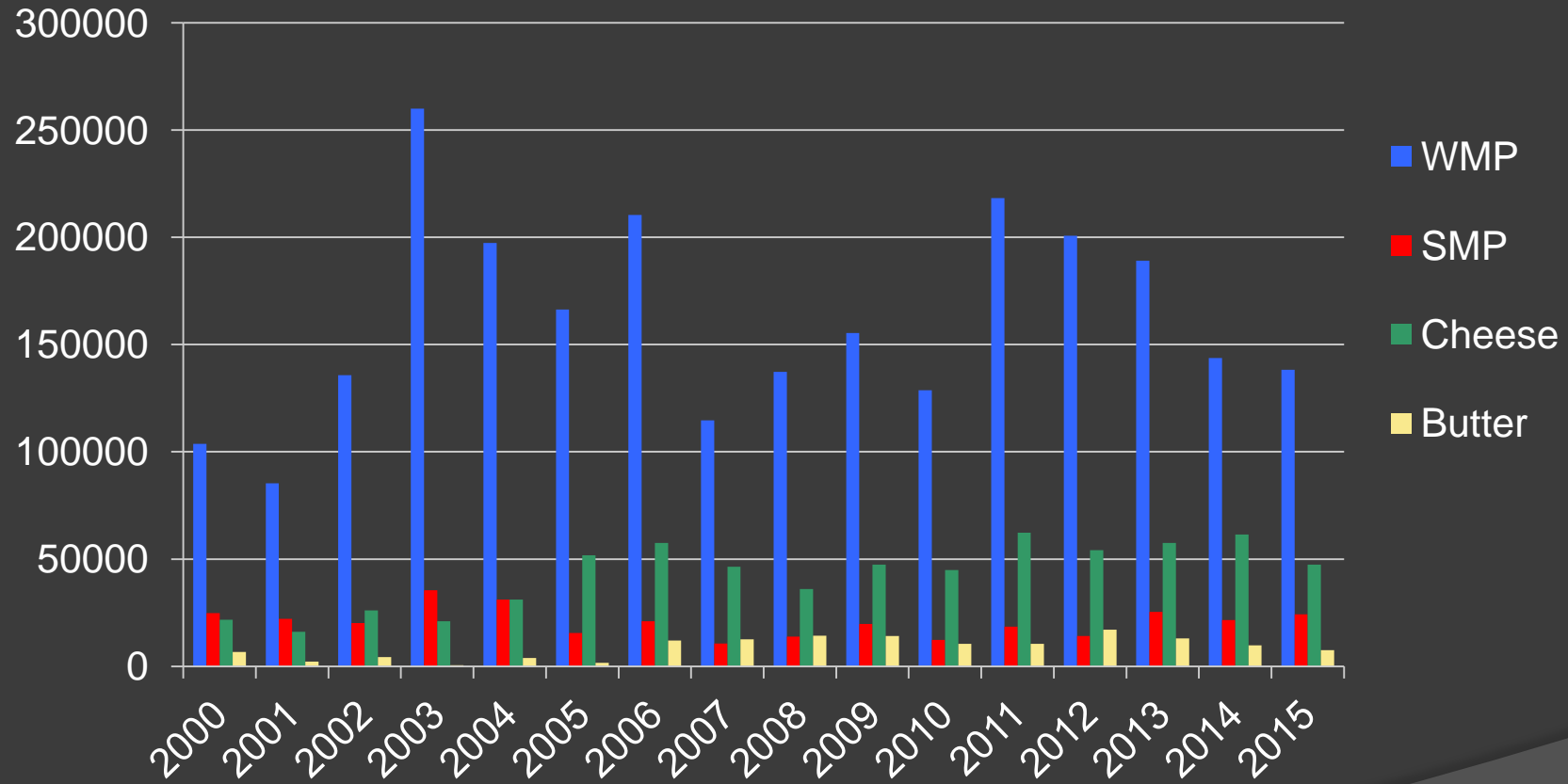
Milk Production, Internal Consumption, Imports and Exports.



Product Mix



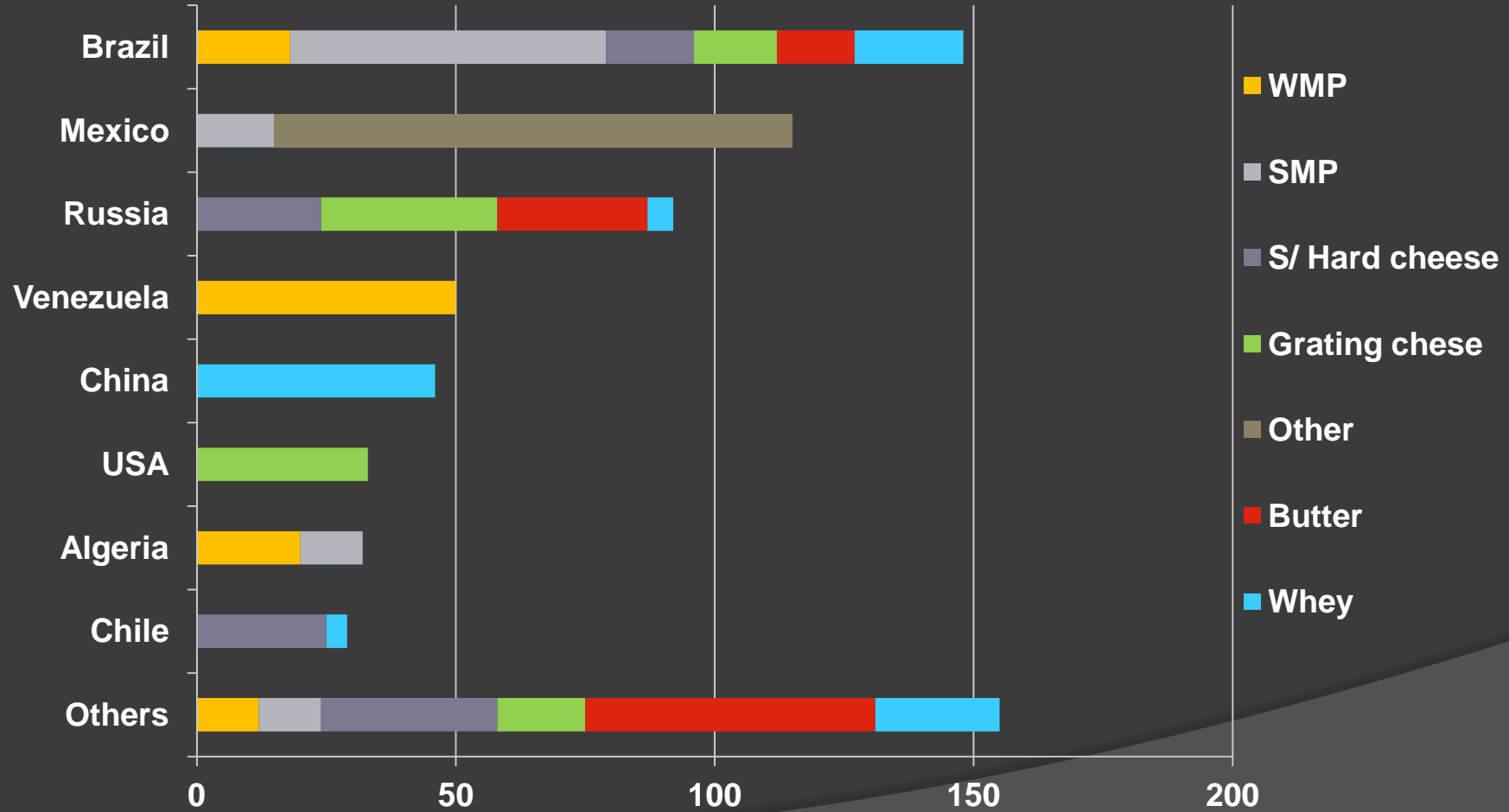
Export Trade Mix



Export by Products

	WMP	SMP	Cheese
2000	103638	24785	21710
2003	259904	35462	20964
2006	210408	21076	57580
2009	155402	19785	47430
2012	200722	14136	54117
2015	138280	24228	47381

Exports in 2015 by Product and Destinations



Destination of exports

	Milk Powder				Cheese						Butter		Whey	
	WMP	%	SMP	%	S/Hard	%	Grating	%	Other	%		%		%
Total	138.280	100	24.228	100	14.415	100	7.852	100	3.927	100	7.590	100	63.902	100
Venezuela	68.654	50												
Algeria	28.379	20	3.008	12										
Brazil	25.313	18	14.800	61	2.477	17	1.260	16			1.131	15	13.425	21
Mexico			3.600	15					3.927	100				
Chile					3.582	25							2.804	4
Russia					3.493	24	2.684	34			2.231	29	3.170	5
USA							2.592	33						
China													29.539	46
Others	15.934	12	2.820	12	4.863	34	1.316	17	0		4.228	56	14.964	24