

# Corn & Soybeans

- ▶ **Corn** (source WASDE)
  - ▶ Estimate for the 2013-14 Season
  - ▶ Global and US outlook
  - ▶ Production, utilization and stocks
- ▶ **Soybeans** (source WASDE)
  - ▶ Estimate for the 2013-14 Season
  - ▶ Global and US outlook
  - ▶ Production, utilization and stocks
- ▶ **Corn and Soybeans prices** (Source CME)
- ▶ **Price connections** (Clal's processing)
- ▶ **Focus on Italy** (Source Milan Chamber of Commerce)



# CORN

## Estimate for 2012-13 season

---

- ▶ **Global corn supplies** for 2013-14 (new marketing year starting September 1<sup>st</sup>) is projected to **increase** (+108,82 mio t in comparison with 2012-13 season). Production is forecasted at a record **965,94 mio t (+13%** vs 2012-13; +9% vs 2011-12).
- ▶ In the **United States**, the world leading corn producer and exporter, after drought and heat during 2012-13, corn production for 2013-14 is projected at a record **359,17 mio t**. U.S. corn use for 2013-14 is projected +16% from 2012-13 on increased use for ethanol, sweeteners and starch.
- ▶ An expected fourth straight year of record foreign corn and production with large crops in **South America** and the **FSU-12** will provide substantial competition for the United States.
- ▶ Increases in Production (+4 mio t) and Imports (+4 mio t) are projected for **China**, the second corn producer in the world.



# CORN – **Global** and **US** outlook: Estimate for the 2013-14 Season



	Million tons	From 2012-13 Season
Beginning stocks	125,43	<b>-5%</b>
Production	<b>965,94</b>	<b>+13%</b>
Total use	936,74	<b>+8%</b>
Ending stocks	154,63	<b>+23%</b>



	Billion bushels	Million tons	From 2012-13 Season
Beginning stocks	0,76	19,29	<b>-23%</b>
Production	14,14	<b>359,17</b>	<b>+31%</b>
Total use	11,62	295,16	<b>+12%</b>
Export stocks	1,30	<b>33,02</b>	<b>+73%</b>
Ending stocks	2,00	50,91	<b>+164%</b>
<b>Price projection</b>	<b>4,70 \$/bushel</b>	<b>185 \$/ton</b>	<b>142 €/ton ↓</b>
2012-13 price	6,90 \$/bushel	272 \$/ton	207 €/ton

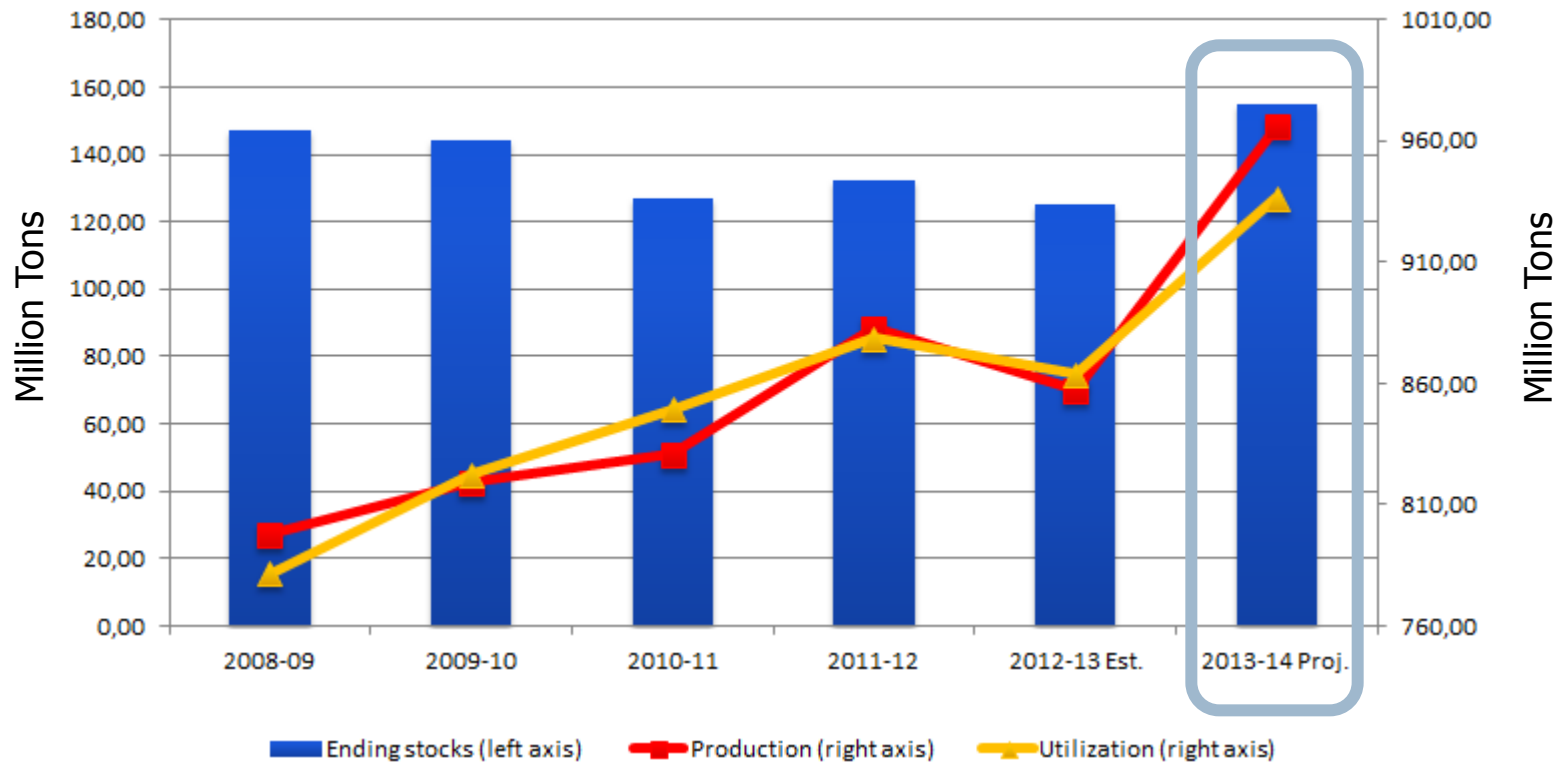
CORN conversion factors  
1 bushel = 0.025 metric ton  
1 metric ton = 39.38 bushel



# CORN - **Global** outlook: production, utilization and stocks

## World – Corn Production, Utilization and Stocks

Processed by CLAL on WASDE data





# SOYBEANS

## Estimate for 2013-14 season

- ▶ **Global soybean production** for 2013-14 (new marketing year starting October 1<sup>st</sup>) is projected at **285,50 mio t**, +6% from 2012-13.
- ▶ In the **United States**, soybean production is projected at a record **96,26 mio t** (+12% in comparison with 2012-13 season), regaining the top position in the world soybean production.
- ▶ The **Argentina** soybean crop is projected at 54,5 mio t (+2%) on record planted area and higher yields. The **Brazil** Soybean crop is projected at a record 85 mio t as higher harvested area more than offset lower yields.
- ▶ In **China**, the largest importer of soybeans, production is projected -0,6 mio t from 2012-13 as producers continue to shift area to more profitable crops.
- ▶ China soybean imports are projected 10 mio t higher (+17%).



# SOYBEANS – **Global** and **US** outlook: Estimate for the 2013-14 Season



	Million tons	From 2012-13 Season
Beginning stocks	62,46	<b>+14%</b>
Production	<b>285,50</b>	<b>+6%</b>
Total use	270,18	<b>+4%</b>
Ending stocks	74,96	<b>+20%</b>



	Billion bushels	Million tons	From 2012-13 Season
Beginning stocks	0,12	3,39	<b>-26%</b>
Production	3,39	<b>92,26</b>	<b>+12%</b>
Total use	1,81	49,38	<b>+5%</b>
Export stocks	1,45	39,46	<b>+7%</b>
Ending stocks	0,27	7,22	<b>+113%</b>
<b>Price projection</b>	<b>10,50 \$/bushel</b>	<b>386 \$/ton</b>	<b>300 €/ton ↓</b>
2012-13 price	14,30\$/bushel	525 \$/ton	404 €/ton

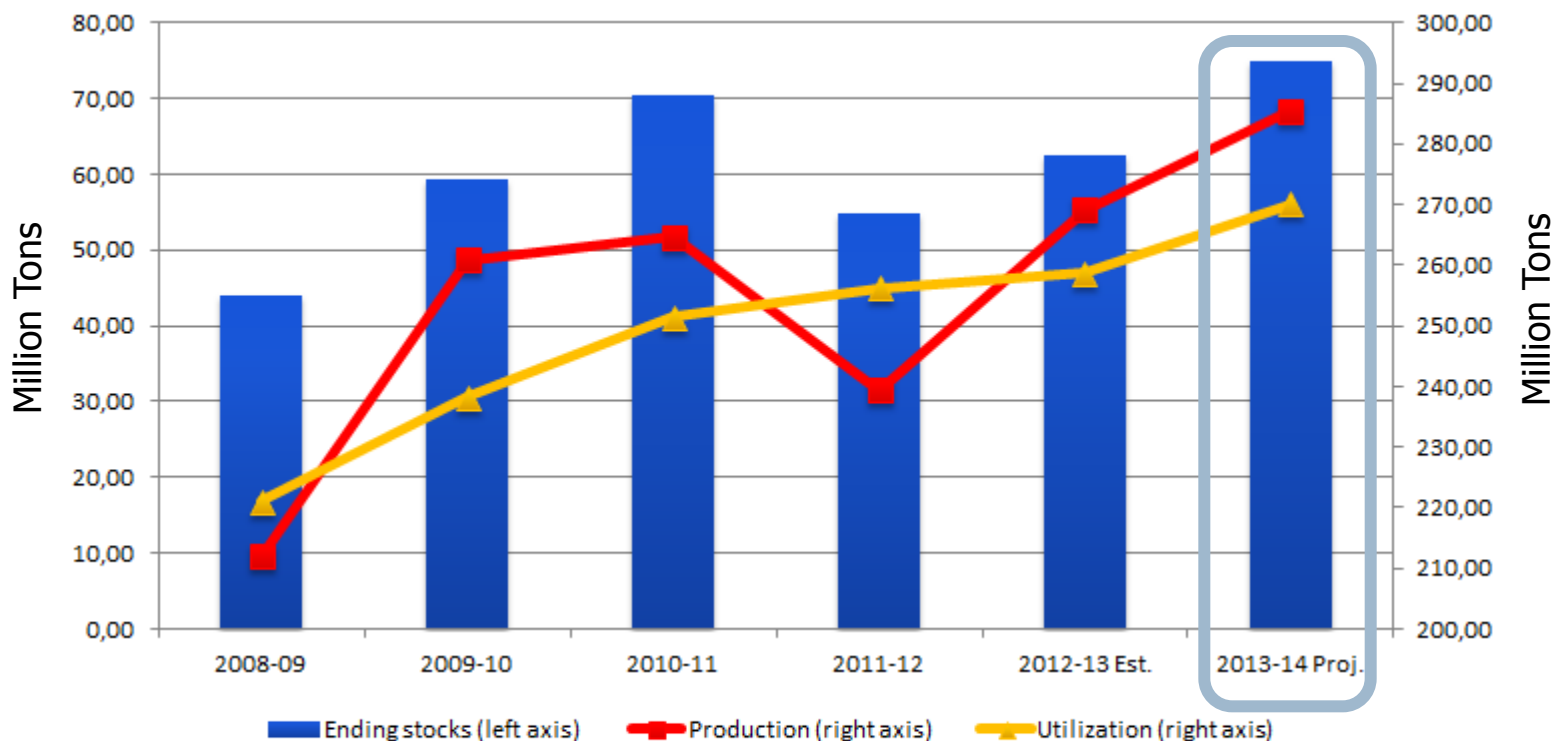
**SOYBEANS conversion factors**  
 1 bushel = 0.027 metric ton  
 1 metric ton = 36.74 bushel



# SOYBEANS - **Global** outlook: production, utilization and stocks

## World – Soybeans Production, Utilization and Stocks

Processed by CLAL on WASDE data



# Chicago Mercantile Exchange (CME)

## Corn and Soybeans prices

- ▶ Corn price trend as listed by the [CME of Chicago](#):



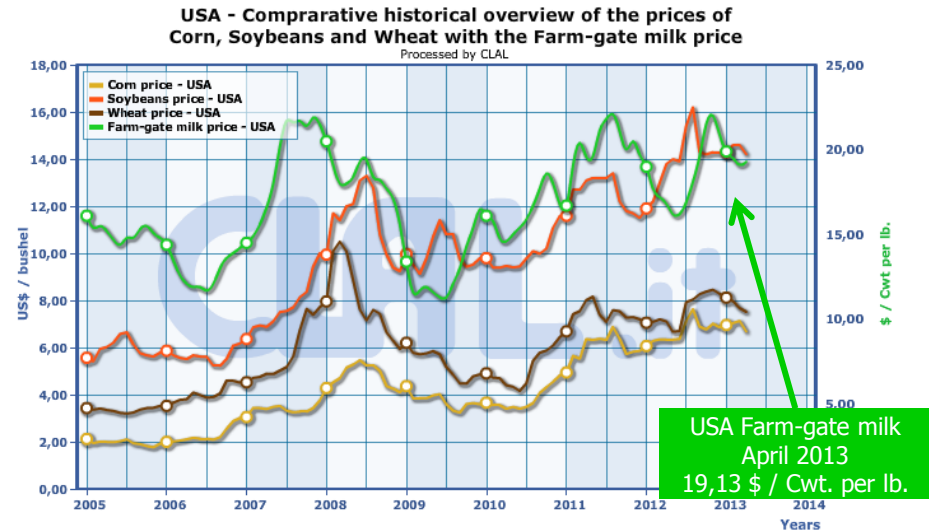
- ▶ Soybean price trend as listed by the [CME of Chicago](#):



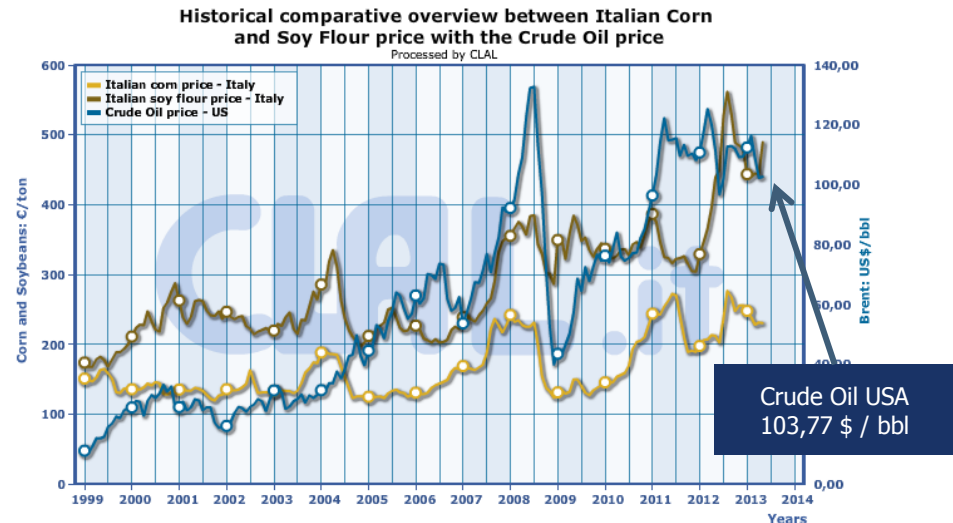


# Agricultural and Energy Inputs Correlations

- ▶ US – Price comparison: Corn, Soybeans, Wheat and Farm-gate milk price



- ▶ Price comparison: Corn (Italy), Soy flour (Italy) and Crude Oil (US)



# Focus on **Italy**

## Corn and Soy prices

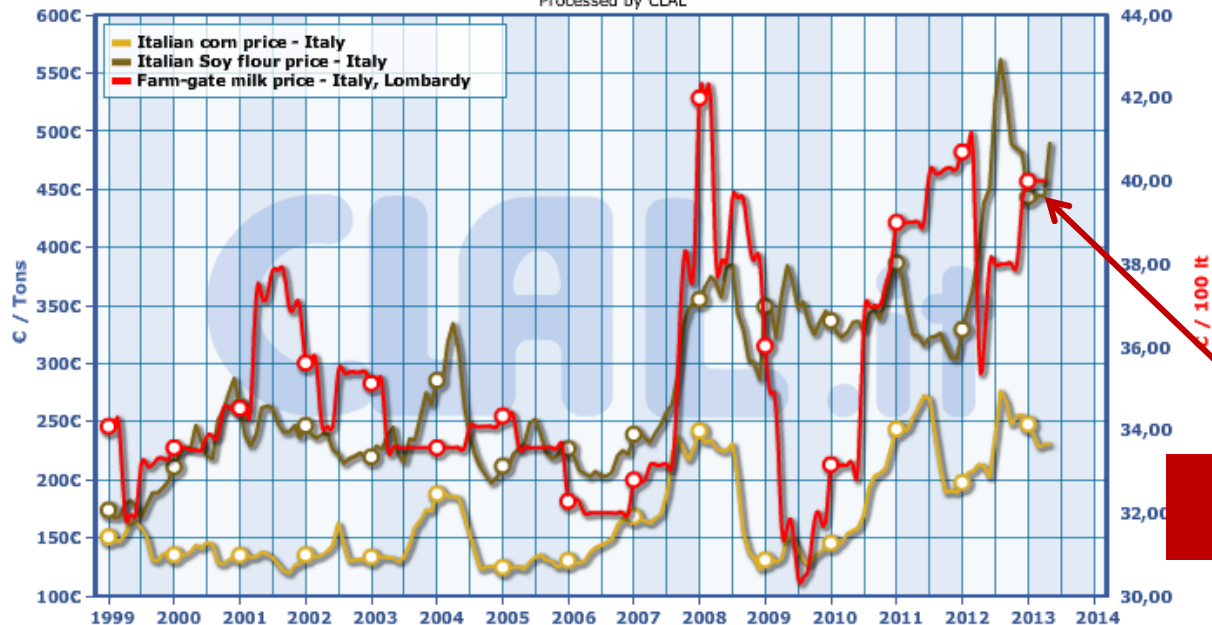
▶ National Corn and Soy prices as listed by the Milan Chamber of Commerce, in comparison with the Farm-gate milk price:

- ▶ Italian Corn: 230 ÷ 231 €/ton (**stable** from last month)
- ▶ Italian Soy flour: 498 ÷ 499 €/ton (**+46 €** from last month)



**Historical comparative overview between Italian Corn and Soy Flour price with the Farm-gate Milk price**

Processed by CLAL



Farm-gate milk  
Italy (Lombardy)  
April 40 € / 100 It