

Milk production report

22/23 by State

(Million Litres)



	New South Wales			Victoria			Queensland			South Australia			Western Australia			Tasmania			Australia		
	21/22	22/23	Var %	21/22	22/23	Var %	21/22	22/23	Var %	21/22	22/23	Var %	21/22	22/23	Var %	21/22	22/23	Var %	21/22	22/23	Var %
July	92.3	80.7	-12.6%	411.9	386.4	-6.2%	26.0	22.3	-14.3%	34.0	32.1	-5.7%	29.1	29.1	-0.2%	22.3	19.7	-11.6%	615.6	570.2	-7.4%
YTD	92.3	80.7	-12.6%	411.9	386.4	-6.2%	26.0	22.3	-14.3%	34.0	32.1	-5.7%	29.1	29.1	-0.2%	22.3	19.7	-11.6%	615.6	570.2	-7.4%
August	98.4	85.5	-13.1%	471.6	450.6	-4.4%	27.7	25.1	-9.6%	36.3	35.1	-3.3%	29.0	28.2	-2.8%	36.5	35.6	-2.5%	699.5	660.1	-5.6%
YTD	190.8	166.3	-12.9%	883.4	837.0	-5.3%	53.7	47.3	-11.8%	70.3	67.2	-4.5%	58.1	57.3	-1.5%	58.7	55.3	-5.9%	1,315.1	1,230.3	-6.5%
September	100.2	89.6	-10.5%	564.7	527.7	-6.5%	28.4	25.0	-12.1%	45.6	43.2	-5.3%	30.9	30.0	-3.1%	83.0	82.5	-0.5%	852.8	798.1	-6.4%
YTD	291.0	255.9	-12.1%	1,448.1	1,364.7	-5.8%	82.1	72.3	-11.9%	115.9	110.4	-4.8%	89.1	87.3	-2.0%	141.7	137.8	-2.8%	2,167.9	2,028.4	-6.4%
October	105.0	92.8	-11.6%	623.1	575.7	-7.6%	28.8	26.0	-9.6%	50.8	49.0	-3.5%	32.6	32.1	-1.5%	112.6	113.9	1.2%	952.8	889.6	-6.6%
YTD	396.0	348.7	-11.9%	2,071.1	1,940.4	-6.3%	110.9	98.4	-11.3%	166.7	159.4	-4.4%	121.7	119.4	-1.9%	254.3	251.7	-1.0%	3,120.7	2,917.9	-6.5%
November	99.5	86.4	-13.1%	586.4	519.3	-11.4%	27.7	25.5	-7.9%	49.7	45.5	-8.4%	30.7	30.1	-1.7%	113.5	112.9	-0.6%	907.4	819.9	-9.7%
YTD	495.4	435.1	-12.2%	2,657.5	2,459.8	-7.4%	138.6	123.9	-10.6%	216.4	204.9	-5.3%	152.4	149.5	-1.9%	367.8	364.6	-0.9%	4,028.2	3,737.8	-7.2%
December	96.7	86.2	-10.8%	541.3	499.0	-7.8%	26.7	25.6	-4.2%	45.4	42.8	-5.6%	28.7	28.2	-1.8%	108.0	109.5	1.4%	846.7	791.4	-6.5%
YTD	592.1	521.3	-11.9%	3,198.8	2,958.8	-7.5%	165.3	149.4	-9.6%	261.8	247.8	-5.4%	181.1	177.7	-1.9%	475.8	474.1	-0.4%	4,874.9	4,529.1	-7.1%
January	91.0	81.0	-11.0%	445.2	423.3	-4.9%	24.9	24.5	-1.6%	40.6	41.1	1.2%	26.2	26.4	0.7%	92.5	98.2	6.2%	720.4	694.5	-3.6%
YTD	683.1	602.4	-11.8%	3,644.0	3,382.0	-7.2%	190.2	173.9	-8.5%	302.5	288.9	-4.5%	207.3	204.1	-1.5%	568.3	572.3	0.7%	5,595.2	5,223.7	-6.6%
February	79.8	72.9	-8.7%	347.8	323.7	-6.9%	22.3	20.3	-9.0%	36.6	34.8	-5.0%	23.9	24.3	1.7%	75.1	78.8	4.9%	585.6	554.8	-5.3%
YTD	762.9	675.3	-11.5%	3,991.8	3,705.7	-7.2%	212.5	194.2	-8.6%	339.1	323.7	-4.5%	231.2	228.5	-1.2%	643.4	651.1	1.2%	6,180.9	5,778.5	-6.5%
March	80.7	78.4	-2.9%	354.2	333.8	-5.8%	21.5	21.3	-0.8%	40.9	39.9	-2.4%	26.8	27.1	1.1%	77.0	81.1	5.3%	601.1	581.5	-3.3%
YTD	843.6	753.6	-10.7%	4,346.0	4,039.5	-7.1%	233.9	215.5	-7.9%	380.0	363.6	-4.3%	258.0	255.6	-0.9%	720.4	732.2	1.6%	6,781.9	6,360.0	-6.2%
April	74.4	75.8	1.9%	357.5	340.1	-4.9%	21.4	20.7	-3.2%	38.9	38.7	-0.6%	26.0	26.2	0.6%	69.9	76.5	9.3%	588.1	577.9	-1.7%
YTD	918.0	829.4	-9.6%	4,703.5	4,379.5	-6.9%	255.3	236.2	-7.5%	418.9	402.3	-4.0%	284.0	281.7	-0.8%	790.3	808.6	2.3%	7,370.0	6,937.9	-5.9%
May	76.7			389.3			21.8			38.3			28.0			60.2			614.5		
YTD	994.7			5,092.8			277.1			457.3			312.1			850.5			7,984.4		
June	77.8			371.9			22.0			33.2			28.6			36.4			569.8		
YTD	1,072.4			5,464.7			299.1			490.4			340.6			886.9			8,554.2		
Total	1,072.4			5,464.7			299.1			490.4			340.6			886.9			8,554.2		

Produced by Trade and Strategy, Dairy Australia Limited

Source: Dairy Manufacturers

Please note: These reports contain data based on a combination of voluntary direct reporting from processors, and data sourced from government agencies. Retrospective adjustments are possible if new or revised data is received.

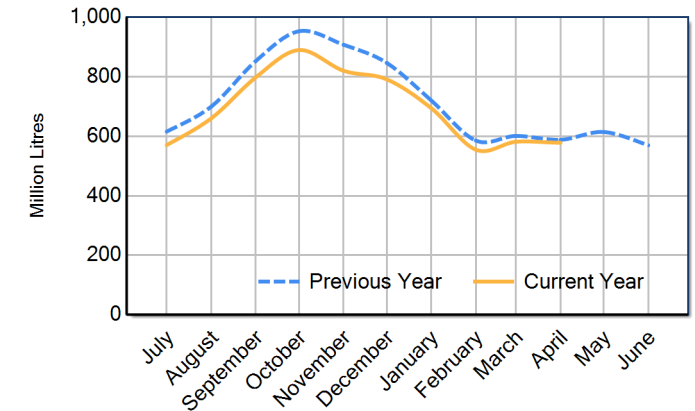
Milk production report (Litres '000s)



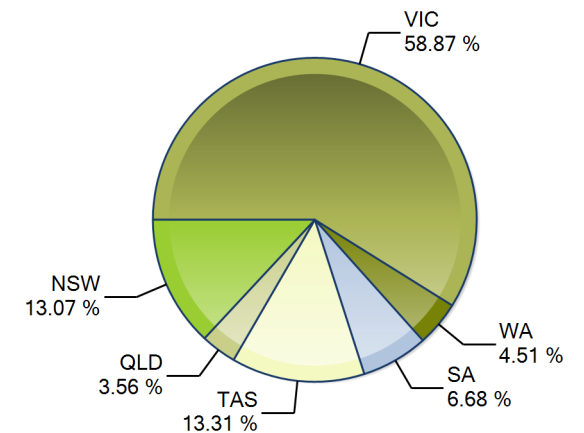
National

		NSW	VIC	QLD	SA	WA	TAS	Australia
Month	April-21	80,666	374,712	23,413	40,620	28,321	76,661	624,393
	April-22	74,358	357,467	21,358	38,931	26,013	69,935	588,061
	April-23	75,806	340,058	20,681	38,716	26,163	76,465	577,889
	% change	1.9%	-4.9%	-3.2%	-0.6%	0.6%	9.3%	-1.7%
Region Share	April-22	12.6%	60.8%	3.6%	6.6%	4.4%	11.9%	100.0%
	April-23	13.1%	58.8%	3.6%	6.7%	4.5%	13.2%	100.0%
Year To Date		NSW	VIC	QLD	SA	WA	TAS	Australia
	2020/2021	903,231	4,823,501	260,726	421,985	301,803	850,674	7,561,920
	2021/2022	917,957	4,703,472	255,282	418,933	284,032	790,300	7,369,975
	2022/2023	829,431	4,379,537	236,194	402,322	281,732	808,640	6,937,857
% change	-9.6%	-6.9%	-7.5%	-4.0%	-0.8%	2.3%	-5.9%	
Region Share	2021/2022	12.5%	63.8%	3.5%	5.7%	3.9%	10.7%	100.0%
	2022/2023	12.0%	63.1%	3.4%	5.8%	4.1%	11.7%	100.0%
Total		NSW	VIC	QLD	SA	WA	TAS	Australia
	2021/2022	1,072,424	5,464,700	299,065	490,444	340,630	886,949	8,554,211
	Region Share	12.5%	63.9%	3.5%	5.7%	4.0%	10.4%	100.0%

Australian Milk Production - National Total 2021/2022 & 2022/2023



State Share of Milk Production for the month of April 2023



Note: These reports contain data based on a combination of voluntary direct reporting from processors, and data sourced from government agencies. Retrospective adjustments are possible if new or revised data is received.

Average Milkfat & Protein (%)

		NSW	VIC	QLD	SA	WA	TAS	Australia
Milkfat	April-21	4.24%	4.54%	4.16%	4.15%	4.17%	4.86%	4.49%
	April-22	4.26%	4.56%	4.18%	4.16%	4.23%	4.84%	4.50%
	April-23	4.22%	4.56%	4.15%	4.22%	4.32%	4.86%	4.51%
	% change 22/23	-1.0%	0.2%	-0.8%	1.4%	2.1%	0.5%	0.2%
Protein	April-21	3.41%	3.50%	3.43%	3.39%	3.24%	3.78%	3.50%
	April-22	3.42%	3.52%	3.41%	3.43%	3.26%	3.79%	3.52%
	April-23	3.44%	3.53%	3.39%	3.44%	3.27%	3.85%	3.54%
% change 22/23	0.5%	0.2%	-0.5%	0.3%	0.3%	1.5%	0.5%	