

Milk production report

22/23 by State

(Million Litres)



	New South Wales			Victoria			Queensland			South Australia			Western Australia			Tasmania			Australia		
	21/22	22/23	Var %	21/22	22/23	Var %	21/22	22/23	Var %	21/22	22/23	Var %	21/22	22/23	Var %	21/22	22/23	Var %	21/22	22/23	Var %
July	92.3	80.7	-12.6%	411.9	386.4	-6.2%	26.0	22.3	-14.3%	34.0	32.1	-5.7%	29.1	29.1	-0.2%	22.3	19.7	-11.6%	615.6	570.2	-7.4%
YTD	92.3	80.7	-12.6%	411.9	386.4	-6.2%	26.0	22.3	-14.3%	34.0	32.1	-5.7%	29.1	29.1	-0.2%	22.3	19.7	-11.6%	615.6	570.2	-7.4%
August	98.4	85.5	-13.1%	471.6	450.6	-4.4%	27.7	25.1	-9.6%	36.3	35.1	-3.3%	29.0	28.2	-2.8%	36.5	35.6	-2.5%	699.5	660.1	-5.6%
YTD	190.8	166.3	-12.9%	883.4	837.0	-5.3%	53.7	47.3	-11.8%	70.3	67.2	-4.5%	58.1	57.3	-1.5%	58.7	55.3	-5.9%	1,315.1	1,230.3	-6.5%
September	100.2	89.6	-10.5%	564.7	527.7	-6.5%	28.4	25.0	-12.1%	45.6	43.2	-5.3%	30.9	30.0	-3.1%	83.0	82.5	-0.5%	852.8	798.1	-6.4%
YTD	291.0	255.9	-12.1%	1,448.1	1,364.7	-5.8%	82.1	72.3	-11.9%	115.9	110.4	-4.8%	89.1	87.3	-2.0%	141.7	137.8	-2.8%	2,167.9	2,028.4	-6.4%
October	105.0	92.8	-11.6%	623.1	575.7	-7.6%	28.8	26.0	-9.6%	50.8	49.0	-3.5%	32.6	32.1	-1.5%	112.6	113.9	1.2%	952.8	889.6	-6.6%
YTD	396.0	348.7	-11.9%	2,071.1	1,940.4	-6.3%	110.9	98.4	-11.3%	166.7	159.4	-4.4%	121.7	119.4	-1.9%	254.3	251.7	-1.0%	3,120.7	2,917.9	-6.5%
November	99.5	86.4	-13.1%	586.4	519.3	-11.4%	27.7	25.5	-7.9%	49.7	45.5	-8.4%	30.7	30.1	-1.7%	113.5	112.9	-0.6%	907.4	819.9	-9.7%
YTD	495.4	435.1	-12.2%	2,657.5	2,459.8	-7.4%	138.6	123.9	-10.6%	216.4	204.9	-5.3%	152.4	149.5	-1.9%	367.8	364.6	-0.9%	4,028.2	3,737.8	-7.2%
December	96.7	86.2	-10.8%	541.3	499.0	-7.8%	26.7	25.6	-4.2%	45.4	42.8	-5.6%	28.7	28.2	-1.8%	108.0	109.5	1.4%	846.7	791.4	-6.5%
YTD	592.1	521.3	-11.9%	3,198.8	2,958.8	-7.5%	165.3	149.4	-9.6%	261.8	247.8	-5.4%	181.1	177.7	-1.9%	475.8	474.1	-0.4%	4,874.9	4,529.1	-7.1%
January	91.0	81.0	-11.0%	445.2	423.3	-4.9%	24.9	24.5	-1.6%	40.6	41.1	1.2%	26.2	26.4	0.7%	92.5	98.2	6.2%	720.4	694.5	-3.6%
YTD	683.1	602.4	-11.8%	3,644.0	3,382.0	-7.2%	190.2	173.9	-8.5%	302.5	288.9	-4.5%	207.3	204.1	-1.5%	568.3	572.3	0.7%	5,595.2	5,223.7	-6.6%
February	79.8	72.9	-8.7%	347.8	323.7	-6.9%	22.3	20.3	-9.0%	36.6	34.8	-5.0%	23.9	24.3	1.7%	75.1	78.8	4.9%	585.6	554.8	-5.3%
YTD	762.9	675.3	-11.5%	3,991.8	3,705.7	-7.2%	212.5	194.2	-8.6%	339.1	323.7	-4.5%	231.2	228.5	-1.2%	643.4	651.1	1.2%	6,180.9	5,778.5	-6.5%
March	80.7			354.2			21.5			40.9			26.8			77.0			601.1		
YTD	843.6			4,346.0			233.9			380.0			258.0			720.4			6,781.9		
April	74.4			357.5			21.4			38.9			26.0			69.9			588.1		
YTD	918.0			4,703.5			255.3			418.9			284.0			790.3			7,370.0		
May	76.7			389.3			21.8			38.3			28.0			60.2			614.5		
YTD	994.7			5,092.8			277.1			457.3			312.1			850.5			7,984.4		
June	77.8			371.9			22.0			33.2			28.6			36.4			569.8		
YTD	1,072.4			5,464.7			299.1			490.4			340.6			886.9			8,554.2		
Total	1,072.4			5,464.7			299.1			490.4			340.6			886.9			8,554.2		

Produced by Trade and Strategy, Dairy Australia Limited

Source: Dairy Manufacturers

Please note: These reports contain data based on a combination of voluntary direct reporting from processors, and data sourced from government agencies. Retrospective adjustments are possible if new or revised data is received.

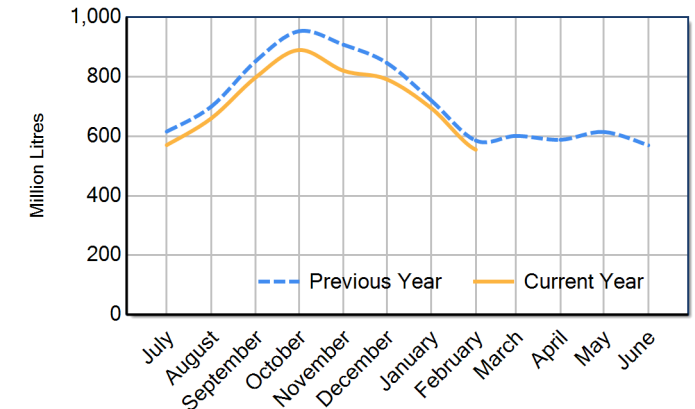
Milk production report (Litres '000s)



National

		NSW	VIC	QLD	SA	WA	TAS	Australia
Month	February-21	78,267	371,597	22,399	37,159	26,138	82,132	617,691
	February-22	79,814	347,813	22,314	36,647	23,917	75,125	585,629
	February-23	72,891	323,690	20,315	34,806	24,331	78,776	554,809
	% change	-8.7%	-6.9%	-9.0%	-5.0%	1.7%	4.9%	-5.3%
Region Share	February-22	13.6%	59.4%	3.8%	6.3%	4.1%	12.8%	100.0%
	February-23	13.1%	58.3%	3.7%	6.3%	4.4%	14.2%	100.0%
Year To Date		NSW	VIC	QLD	SA	WA	TAS	Australia
	2020/2021	739,521	4,082,190	214,316	339,440	243,761	689,865	6,309,094
	2021/2022	762,886	3,991,782	212,465	339,101	231,228	643,394	6,180,856
	2022/2023	675,259	3,705,729	194,224	323,677	228,474	651,109	5,778,471
% change	-11.5%	-7.2%	-8.6%	-4.5%	-1.2%	1.2%	-6.5%	
Region Share	2021/2022	12.3%	64.6%	3.4%	5.5%	3.7%	10.4%	100.0%
	2022/2023	11.7%	64.1%	3.4%	5.6%	4.0%	11.3%	100.0%
Total		NSW	VIC	QLD	SA	WA	TAS	Australia
	2021/2022	1,072,424	5,464,700	299,065	490,444	340,630	886,949	8,554,211
Region Share		12.5%	63.9%	3.5%	5.7%	4.0%	10.4%	100.0%

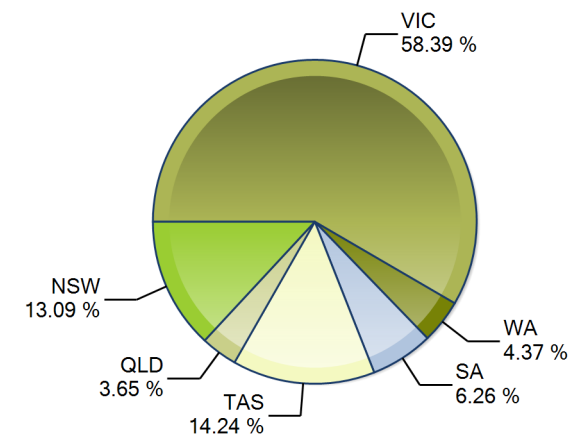
Australian Milk Production - National Total 2021/2022 & 2022/2023



Average Milkfat & Protein (%)

		NSW	VIC	QLD	SA	WA	TAS	Australia
Milkfat	February-21	4.01%	4.36%	3.97%	3.94%	4.06%	4.47%	4.28%
	February-22	4.00%	4.40%	3.90%	4.01%	4.07%	4.51%	4.30%
	February-23	4.07%	4.42%	4.04%	4.08%	4.19%	4.51%	4.34%
	% change 22/23	2.0%	0.3%	3.5%	1.9%	3.1%	-0.1%	0.9%
Protein	February-21	3.28%	3.42%	3.31%	3.30%	3.19%	3.57%	3.40%
	February-22	3.22%	3.40%	3.19%	3.33%	3.22%	3.54%	3.38%
% change 22/23	2.8%	0.5%	3.4%	1.0%	-0.5%	1.0%	1.0%	

State Share of Milk Production for the month of February 2023



Note: These reports contain data based on a combination of voluntary direct reporting from processors, and data sourced from government agencies. Retrospective adjustments are possible if new or revised data is received.