

# Milk production report

## 22/23 by State

### (Million Litres)



	New South Wales			Victoria			Queensland			South Australia			Western Australia			Tasmania			Australia		
	21/22	22/23	Var %	21/22	22/23	Var %	21/22	22/23	Var %	21/22	22/23	Var %	21/22	22/23	Var %	21/22	22/23	Var %	21/22	22/23	Var %
July	92.3	80.7	-12.6%	411.9	386.4	-6.2%	26.0	22.3	-14.3%	34.0	32.1	-5.7%	29.1	29.1	-0.2%	22.3	19.7	-11.6%	615.6	570.2	-7.4%
YTD	92.3	80.7	-12.6%	411.9	386.4	-6.2%	26.0	22.3	-14.3%	34.0	32.1	-5.7%	29.1	29.1	-0.2%	22.3	19.7	-11.6%	615.6	570.2	-7.4%
August	98.4	85.5	-13.1%	471.6	450.6	-4.4%	27.7	25.1	-9.6%	36.3	35.1	-3.3%	29.0	28.2	-2.8%	36.5	35.6	-2.5%	699.5	660.1	-5.6%
YTD	190.8	166.3	-12.9%	883.4	837.0	-5.3%	53.7	47.3	-11.8%	70.3	67.2	-4.5%	58.1	57.3	-1.5%	58.7	55.3	-5.9%	1,315.1	1,230.3	-6.5%
September	100.2	89.6	-10.5%	564.7	527.7	-6.5%	28.4	25.0	-12.1%	45.6	43.2	-5.3%	30.9	30.0	-3.1%	83.0	82.5	-0.5%	852.8	798.1	-6.4%
YTD	291.0	255.9	-12.1%	1,448.1	1,364.7	-5.8%	82.1	72.3	-11.9%	115.9	110.4	-4.8%	89.1	87.3	-2.0%	141.7	137.8	-2.8%	2,167.9	2,028.4	-6.4%
October	105.0	92.8	-11.6%	623.1	575.7	-7.6%	28.8	26.0	-9.6%	50.8	49.0	-3.5%	32.6	32.1	-1.5%	112.6	113.9	1.2%	952.8	889.6	-6.6%
YTD	396.0	348.7	-11.9%	2,071.1	1,940.4	-6.3%	110.9	98.4	-11.3%	166.7	159.4	-4.4%	121.7	119.4	-1.9%	254.3	251.7	-1.0%	3,120.7	2,917.9	-6.5%
November	99.5	86.4	-13.1%	586.4	519.3	-11.4%	27.7	25.5	-7.9%	49.7	45.5	-8.4%	30.7	30.1	-1.7%	113.5	112.9	-0.6%	907.4	819.9	-9.7%
YTD	495.4	435.1	-12.2%	2,657.5	2,459.8	-7.4%	138.6	123.9	-10.6%	216.4	204.9	-5.3%	152.4	149.5	-1.9%	367.8	364.6	-0.9%	4,028.2	3,737.8	-7.2%
December	96.7	86.2	-10.8%	541.3	499.0	-7.8%	26.7	25.6	-4.2%	45.4	42.8	-5.6%	28.7	28.2	-1.8%	108.0	109.5	1.4%	846.7	791.4	-6.5%
YTD	592.1	521.3	-11.9%	3,198.8	2,958.8	-7.5%	165.3	149.4	-9.6%	261.8	247.8	-5.4%	181.1	177.7	-1.9%	475.8	474.1	-0.4%	4,874.9	4,529.1	-7.1%
January	91.0	81.0	-11.0%	445.2	423.3	-4.9%	24.9	24.5	-1.6%	40.6	41.1	1.2%	26.2	26.4	0.7%	92.5	98.2	6.2%	720.4	694.5	-3.6%
YTD	683.1	602.4	-11.8%	3,644.0	3,382.0	-7.2%	190.2	173.9	-8.5%	302.5	288.9	-4.5%	207.3	204.1	-1.5%	568.3	572.3	0.7%	5,595.2	5,223.7	-6.6%
February	79.8			347.8			22.3			36.6			23.9			75.1			585.6		
YTD	762.9			3,991.8			212.5			339.1			231.2			643.4			6,180.9		
March	80.7			354.2			21.5			40.9			26.8			77.0			601.1		
YTD	843.6			4,346.0			233.9			380.0			258.0			720.4			6,781.9		
April	74.4			357.5			21.4			38.9			26.0			69.9			588.1		
YTD	918.0			4,703.5			255.3			418.9			284.0			790.3			7,370.0		
May	76.7			389.3			21.8			38.3			28.0			60.2			614.5		
YTD	994.7			5,092.8			277.1			457.3			312.1			850.5			7,984.4		
June	77.8			371.9			22.0			33.2			28.6			36.4			569.8		
YTD	1,072.4			5,464.7			299.1			490.4			340.6			886.9			8,554.2		
<b>Total</b>	<b>1,072.4</b>			<b>5,464.7</b>			<b>299.1</b>			<b>490.4</b>			<b>340.6</b>			<b>886.9</b>			<b>8,554.2</b>		

Produced by Trade and Strategy, Dairy Australia Limited

Source: Dairy Manufacturers

Please note: These reports contain data based on a combination of voluntary direct reporting from processors, and data sourced from government agencies. Retrospective adjustments are possible if new or revised data is received.

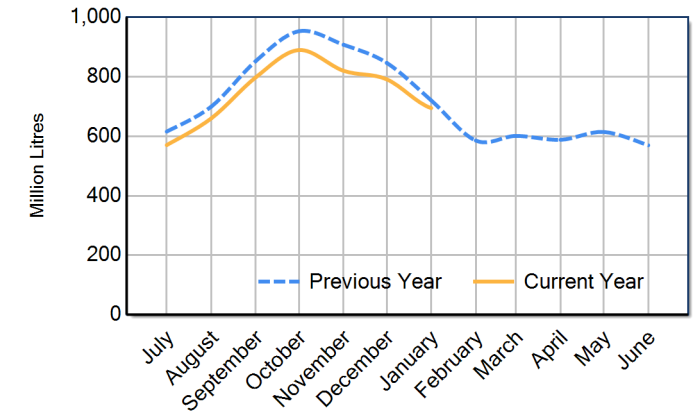
# Milk production report (Litres '000s)



## National

		NSW	VIC	QLD	SA	WA	TAS	Australia
<b>Month</b>	January-21	89,668	474,578	26,664	40,797	28,008	101,950	761,665
	January-22	90,995	445,156	24,859	40,620	26,248	92,494	720,373
	January-23	81,030	423,252	24,463	41,107	26,443	98,223	694,517
	<b>% change</b>	<b>-11.0%</b>	<b>-4.9%</b>	<b>-1.6%</b>	<b>1.2%</b>	<b>0.7%</b>	<b>6.2%</b>	<b>-3.6%</b>
<b>Region Share</b>	January-22	12.6%	61.8%	3.5%	5.6%	3.6%	12.8%	100.0%
	January-23	11.7%	60.9%	3.5%	5.9%	3.8%	14.1%	100.0%
<b>Year To Date</b>		NSW	VIC	QLD	SA	WA	TAS	Australia
	2020/2021	661,255	3,710,593	191,917	302,281	217,624	607,733	5,691,402
	2021/2022	683,072	3,643,969	190,151	302,454	207,312	568,270	5,595,227
	2022/2023	602,367	3,382,039	173,908	288,872	204,143	572,333	5,223,662
<b>% change</b>	<b>-11.8%</b>	<b>-7.2%</b>	<b>-8.5%</b>	<b>-4.5%</b>	<b>-1.5%</b>	<b>0.7%</b>	<b>-6.6%</b>	
<b>Region Share</b>	2021/2022	12.2%	65.1%	3.4%	5.4%	3.7%	10.2%	100.0%
	2022/2023	11.5%	64.7%	3.3%	5.5%	3.9%	11.0%	100.0%
<b>Total</b>		NSW	VIC	QLD	SA	WA	TAS	Australia
	2021/2022	1,072,424	5,464,700	299,065	490,444	340,630	886,949	8,554,211
<b>Region Share</b>		<b>12.5%</b>	<b>63.9%</b>	<b>3.5%</b>	<b>5.7%</b>	<b>4.0%</b>	<b>10.4%</b>	<b>100.0%</b>

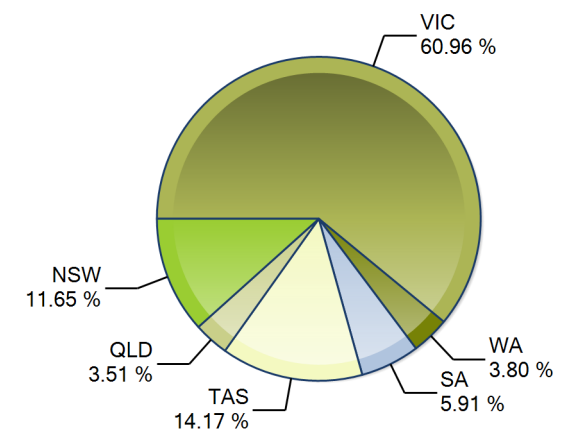
Australian Milk Production - National Total 2021/2022 & 2022/2023



## Average Milkfat & Protein (%)

		NSW	VIC	QLD	SA	WA	TAS	Australia
<b>Milkfat</b>	January-21	3.98%	4.26%	3.95%	3.89%	3.96%	4.27%	4.18%
	January-22	4.03%	4.27%	4.00%	3.94%	4.01%	4.33%	4.21%
	January-23	4.05%	4.21%	4.00%	3.98%	4.13%	4.27%	4.18%
	<b>% change 22/23</b>	<b>0.5%</b>	<b>-1.5%</b>	<b>-0.1%</b>	<b>1.0%</b>	<b>2.9%</b>	<b>-1.2%</b>	<b>-0.9%</b>
<b>Protein</b>	January-21	3.24%	3.38%	3.30%	3.26%	3.16%	3.51%	3.36%
	January-22	3.24%	3.33%	3.27%	3.25%	3.19%	3.45%	3.32%
	January-23	3.26%	3.33%	3.27%	3.30%	3.18%	3.44%	3.33%
<b>% change 22/23</b>	<b>0.5%</b>	<b>0.2%</b>	<b>-0.1%</b>	<b>1.5%</b>	<b>-0.4%</b>	<b>-0.2%</b>	<b>0.3%</b>	

State Share of Milk Production for the month of January 2023



Note: These reports contain data based on a combination of voluntary direct reporting from processors, and data sourced from government agencies. Retrospective adjustments are possible if new or revised data is received.