

Milk production report

21/22 by State

(Million Litres)



| | New South Wales | | | Victoria | | | Queensland | | | South Australia | | | Western Australia | | | Tasmania | | | Australia | | |
|--------------|-----------------|-------|-------|----------------|---------|-------|--------------|-------|-------|-----------------|-------|-------|-------------------|-------|-------|--------------|-------|--------|----------------|---------|-------|
| | 20/21 | 21/22 | Var % | 20/21 | 21/22 | Var % | 20/21 | 21/22 | Var % | 20/21 | 21/22 | Var % | 20/21 | 21/22 | Var % | 20/21 | 21/22 | Var % | 20/21 | 21/22 | Var % |
| July | 90.7 | 92.3 | 1.8% | 422.1 | 405.7 | -3.9% | 26.7 | 26.0 | -2.8% | 35.3 | 34.0 | -3.5% | 30.4 | 29.1 | -4.2% | 23.8 | 22.3 | -6.5% | 628.9 | 609.4 | -3.1% |
| YTD | 90.7 | 92.3 | 1.8% | 422.1 | 405.7 | -3.9% | 26.7 | 26.0 | -2.8% | 35.3 | 34.0 | -3.5% | 30.4 | 29.1 | -4.2% | 23.8 | 22.3 | -6.5% | 628.9 | 609.4 | -3.1% |
| August | 94.9 | 98.4 | 3.7% | 483.6 | 464.1 | -4.0% | 27.8 | 27.7 | -0.4% | 38.1 | 36.3 | -4.6% | 30.7 | 29.0 | -5.5% | 41.7 | 36.5 | -12.5% | 716.8 | 692.1 | -3.4% |
| YTD | 185.6 | 190.8 | 2.8% | 905.7 | 869.8 | -4.0% | 54.5 | 53.7 | -1.6% | 73.3 | 70.3 | -4.1% | 61.1 | 58.1 | -4.8% | 65.5 | 58.7 | -10.3% | 1,345.7 | 1,301.5 | -3.3% |
| September | 97.8 | 100.2 | 2.4% | 575.4 | 556.6 | -3.3% | 27.8 | 28.4 | 2.2% | 45.0 | 45.6 | 1.3% | 31.9 | 30.9 | -3.2% | 89.8 | 83.0 | -7.6% | 867.9 | 844.7 | -2.7% |
| YTD | 283.4 | 291.0 | 2.7% | 1,481.1 | 1,426.4 | -3.7% | 82.4 | 82.1 | -0.3% | 118.3 | 115.9 | -2.0% | 93.0 | 89.1 | -4.3% | 155.3 | 141.7 | -8.8% | 2,213.6 | 2,146.2 | -3.0% |
| October | 101.4 | 105.0 | 3.5% | 628.0 | 613.9 | -2.2% | 29.2 | 28.8 | -1.5% | 50.6 | 50.8 | 0.4% | 34.1 | 32.6 | -4.4% | 118.9 | 112.6 | -5.3% | 962.3 | 943.7 | -1.9% |
| YTD | 384.9 | 396.0 | 2.9% | 2,109.1 | 2,040.3 | -3.3% | 111.6 | 110.9 | -0.6% | 168.9 | 166.7 | -1.3% | 127.2 | 121.7 | -4.3% | 274.2 | 254.3 | -7.3% | 3,175.9 | 3,089.9 | -2.7% |
| November | 94.8 | 99.5 | 4.9% | 583.1 | 577.9 | -0.9% | 27.1 | 27.7 | 2.2% | 48.1 | 49.7 | 3.3% | 32.1 | 30.7 | -4.6% | 119.6 | 113.5 | -5.1% | 904.9 | 899.0 | -0.7% |
| YTD | 479.7 | 495.4 | 3.3% | 2,692.3 | 2,618.2 | -2.8% | 138.7 | 138.6 | -0.1% | 217.1 | 216.4 | -0.3% | 159.3 | 152.4 | -4.4% | 393.8 | 367.8 | -6.6% | 4,080.8 | 3,988.9 | -2.3% |
| December | 91.9 | 96.7 | 5.2% | 543.7 | 533.5 | -1.9% | 26.6 | 26.7 | 0.5% | 44.4 | 45.4 | 2.2% | 30.3 | 28.7 | -5.3% | 112.0 | 108.0 | -3.6% | 848.9 | 838.9 | -1.2% |
| YTD | 571.6 | 592.1 | 3.6% | 3,236.0 | 3,151.8 | -2.6% | 165.3 | 165.3 | 0.0% | 261.5 | 261.8 | 0.1% | 189.6 | 181.1 | -4.5% | 505.8 | 475.8 | -5.9% | 4,929.7 | 4,827.8 | -2.1% |
| January | 89.7 | 91.0 | 1.5% | 474.6 | 438.8 | -7.5% | 26.7 | 24.9 | -6.8% | 40.8 | 40.6 | -0.4% | 28.0 | 26.2 | -6.3% | 101.9 | 92.5 | -9.3% | 761.7 | 714.0 | -6.3% |
| YTD | 661.3 | 683.1 | 3.3% | 3,710.6 | 3,590.6 | -3.2% | 191.9 | 190.2 | -0.9% | 302.3 | 302.5 | 0.1% | 217.6 | 207.3 | -4.7% | 607.7 | 568.3 | -6.5% | 5,691.4 | 5,541.8 | -2.6% |
| February | 78.3 | 79.8 | 2.0% | 371.6 | 342.5 | -7.8% | 22.4 | 22.3 | -0.4% | 37.2 | 36.6 | -1.4% | 26.1 | 23.9 | -8.5% | 82.1 | 75.1 | -8.5% | 617.7 | 580.3 | -6.1% |
| YTD | 739.5 | 762.9 | 3.2% | 4,082.2 | 3,933.0 | -3.7% | 214.3 | 212.5 | -0.9% | 339.4 | 339.1 | -0.1% | 243.8 | 231.2 | -5.1% | 689.9 | 643.4 | -6.7% | 6,309.1 | 6,122.1 | -3.0% |
| March | 83.0 | 80.7 | -2.8% | 366.6 | 349.6 | -4.6% | 23.0 | 21.5 | -6.7% | 41.9 | 40.9 | -2.4% | 29.7 | 26.8 | -9.9% | 84.1 | 77.0 | -8.5% | 628.4 | 596.4 | -5.1% |
| YTD | 822.6 | 843.6 | 2.6% | 4,448.8 | 4,282.6 | -3.7% | 237.3 | 233.9 | -1.4% | 381.4 | 380.0 | -0.4% | 273.5 | 258.0 | -5.7% | 774.0 | 720.4 | -6.9% | 6,937.5 | 6,718.5 | -3.2% |
| April | 80.7 | | | 374.7 | | | 23.4 | | | 40.6 | | | 28.3 | | | 76.7 | | | 624.4 | | |
| YTD | 903.2 | | | 4,823.5 | | | 260.7 | | | 422.0 | | | 301.8 | | | 850.7 | | | 7,561.9 | | |
| May | 85.6 | | | 421.3 | | | 24.2 | | | 40.5 | | | 30.4 | | | 69.2 | | | 671.1 | | |
| YTD | 988.8 | | | 5,244.8 | | | 284.9 | | | 462.4 | | | 332.2 | | | 919.9 | | | 8,233.1 | | |
| June | 86.6 | | | 406.0 | | | 24.5 | | | 37.1 | | | 29.7 | | | 41.1 | | | 625.1 | | |
| YTD | 1,075.4 | | | 5,650.8 | | | 309.5 | | | 499.5 | | | 361.9 | | | 961.0 | | | 8,858.1 | | |
| Total | 1,075.4 | | | 5,650.8 | | | 309.5 | | | 499.5 | | | 361.9 | | | 961.0 | | | 8,858.1 | | |

Produced by Trade and Strategy, Dairy Australia Limited

Source: Dairy Manufacturers

Please note: These reports contain data based on a combination of voluntary direct reporting from processors, and data sourced from government agencies. Retrospective adjustments are possible if new or revised data is received.

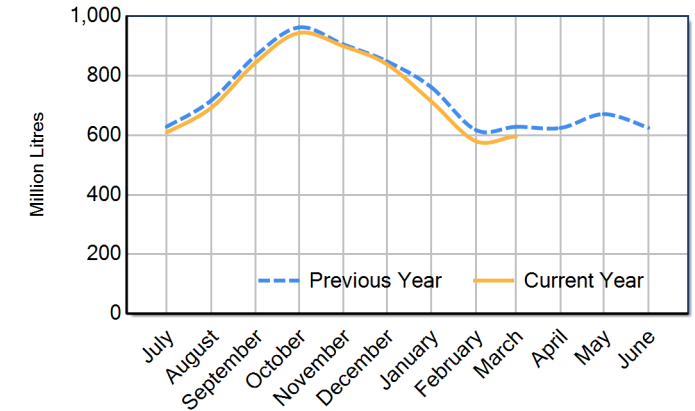
Milk production report (Litres '000s)



National

| | | NSW | VIC | QLD | SA | WA | TAS | Australia |
|---------------------|-----------------|--------------|--------------|--------------|--------------|--------------|--------------|---------------|
| Month | March-20 | 82,589 | 377,499 | 24,577 | 41,363 | 29,288 | 84,682 | 639,998 |
| | March-21 | 83,044 | 366,599 | 22,997 | 41,925 | 29,720 | 84,148 | 628,434 |
| | March-22 | 80,713 | 349,590 | 21,459 | 40,901 | 26,790 | 76,971 | 596,423 |
| | % change | -2.8% | -4.6% | -6.7% | -2.4% | -9.9% | -8.5% | -5.1% |
| Region Share | March-21 | 13.2% | 58.3% | 3.7% | 6.7% | 4.7% | 13.4% | 100.0% |
| | March-22 | 13.5% | 58.6% | 3.6% | 6.9% | 4.5% | 12.9% | 100.0% |
| Year To Date | | NSW | VIC | QLD | SA | WA | TAS | Australia |
| | 2019/2020 | 808,121 | 4,428,533 | 245,574 | 374,167 | 275,887 | 759,125 | 6,891,406 |
| | 2020/2021 | 822,566 | 4,448,789 | 237,313 | 381,365 | 273,482 | 774,013 | 6,937,527 |
| | 2021/2022 | 843,599 | 4,282,627 | 233,923 | 380,001 | 258,019 | 720,365 | 6,718,535 |
| % change | 2.6% | -3.7% | -1.4% | -0.4% | -5.7% | -6.9% | -3.2% | |
| Region Share | 2020/2021 | 11.9% | 64.1% | 3.4% | 5.5% | 3.9% | 11.2% | 100.0% |
| | 2021/2022 | 12.6% | 63.7% | 3.5% | 5.7% | 3.8% | 10.7% | 100.0% |
| Total | | NSW | VIC | QLD | SA | WA | TAS | Australia |
| | 2020/2021 | 1,075,444 | 5,650,790 | 309,451 | 499,500 | 361,929 | 961,022 | 8,858,135 |
| Region Share | | 12.1% | 63.8% | 3.5% | 5.6% | 4.1% | 10.8% | 100.0% |

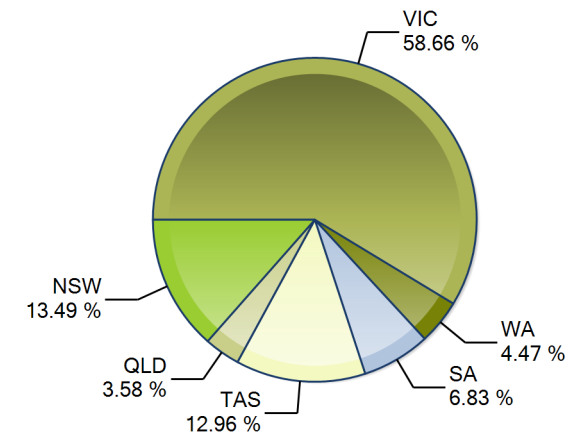
Australian Milk Production - National Total 2020/2021 & 2021/2022



Average Milkfat & Protein (%)

| | | NSW | VIC | QLD | SA | WA | TAS | Australia |
|-----------------------|-----------------------|--------------|--------------|--------------|-------------|--------------|--------------|--------------|
| Milkfat | March-20 | 4.10% | 4.57% | 4.03% | 4.04% | 4.07% | 4.67% | 4.44% |
| | March-21 | 4.13% | 4.55% | 4.16% | 3.99% | 4.08% | 4.72% | 4.44% |
| | March-22 | 4.20% | 4.52% | 4.13% | 4.10% | 4.14% | 4.73% | 4.44% |
| | % change 21/22 | 1.6% | -0.7% | -0.8% | 2.8% | 1.6% | 0.2% | -0.1% |
| Protein | March-20 | 3.34% | 3.56% | 3.30% | 3.39% | 3.22% | 3.73% | 3.52% |
| | March-21 | 3.35% | 3.53% | 3.43% | 3.36% | 3.20% | 3.71% | 3.50% |
| | March-22 | 3.37% | 3.48% | 3.36% | 3.40% | 3.23% | 3.68% | 3.47% |
| % change 21/22 | 0.5% | -1.4% | -2.2% | 1.3% | 0.9% | -0.7% | -0.8% | |

State Share of Milk Production for the month of March 2022



Note: These reports contain data based on a combination of voluntary direct reporting from processors, and data sourced from government agencies. Retrospective adjustments are possible if new or revised data is received.